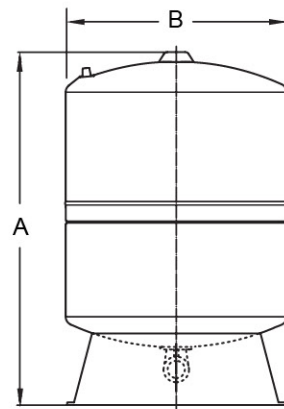


Vertical Tanks With Base



Technical Data



Model	Capacity		Resistant Pressure (bar)	Precharge Pressure		Temperature Range	Dimensions (mm)		Connection
	Litre	Gallon		bar	psi		A	B	
LEO-36LX-PW	36	10	8-10-16	2	29	-10°C ~ 100°C	467	350	1" BSP / NPT
LEO-50LX-PW	50	13	8-10-16	3	44	-10°C ~ 100°C	623	350	1" BSP / NPT
LEO-60LX-PW	60	16	8-10-16	3	44	-10°C ~ 100°C	678	350	1" BSP / NPT
LEO-80LX-PW	80	21	8-10-16	3	44	-10°C ~ 100°C	728	400	1" BSP / NPT
LEO-100LX-PW	100	26	8-10-16	3	44	-10°C ~ 100°C	770	500	1" BSP / NPT
LEO-150LX-PW	150	40	8-10-16	3	44	-10°C ~ 100°C	898	500	1" BSP / NPT

Fix Membrane Tanks

- ▶ Superior Quality
- ▶ Energy Saving
- ▶ Maintenance Free
- ▶ Potable Water

made in
Turkey

www.leogroup.cn

LEO GROUP PUMP(ZHEJIANG) CO.,LTD.

LEO GROUP PUMP(ZHEJIANG) CO.,LTD. (Stock code: 002131)

No.1, 3rd Street, East Industry Center, Wenling, Zhejiang, China, 317511
Tel: +86-576-8998 6360 Fax: +86-576-8998 9898 E-mail: export@leogroup.cn www.leogroup.cn



www.leogroup.cn

Application

- Water booster systems
- Thermal expansion
- Irrigation systems
- Hydraulic hammer arresting
- Heating expansion
- Clean water backwash for Ultra-Filtration systems

Features

- Leak free, O-ring sealed air valve
- Non replaceable membrane
- Health guarantee, potable water
- Comprehensive testing
- Extend pump life

High pressure water resistance test to every tank with experimental pressure before leaving factory.

Water exist between stainless steel connection tube, food-grade butyl membrane. Thanks to this design, water quality won't be poluted by internal part of tank metal body and also external environments.

Quality tested at several stages on production line to insure the structural integrity of every tank.

Eliminate pump body failures due to water hammer

Identification Codes

LEO - 36L V - PW



- PED-CE-2014/68/EU Certified
- Resistant up to 8 / 10 / 16 bars
- Temperature Range: -10°C ~ 100°C
- Maintenance free (Does not require regular air charge checks)
- Reduce noise from unnecessary pump starts

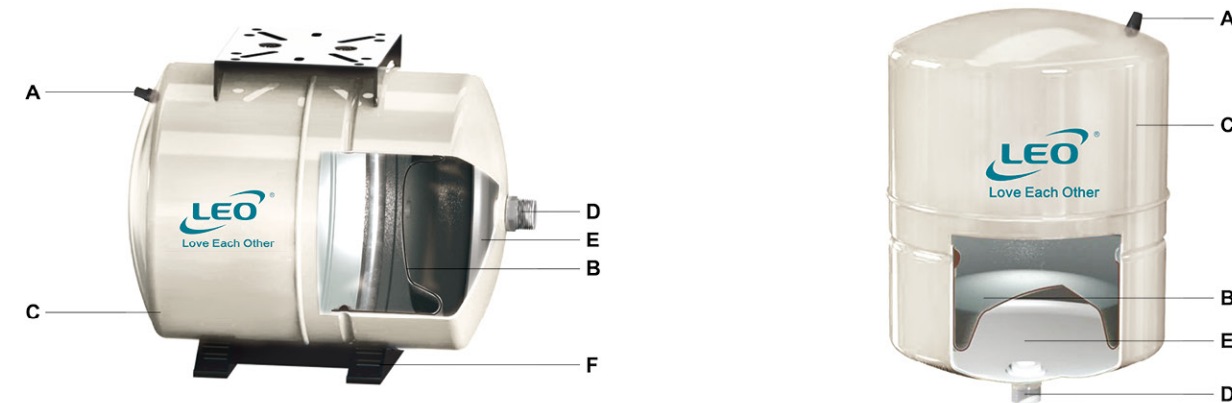
Horizontal Tanks



Vertical Tanks Without Base



Technical Data



A: Brass air valve: Leak free, O-ring sealed, high pressure resistance.

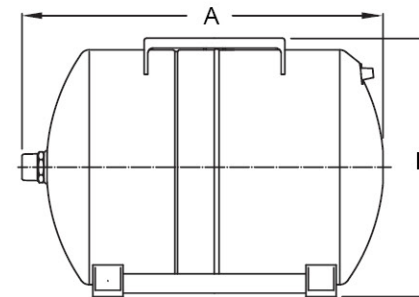
B: Membrane: High quality food-grade butyl have hygienic certified, approved by European Union & USA Institutions.
 DIN 4807-3, NSF-61, WRAS, BS-6920 certified.

C: Double layer painting (epoxy primed paint and polyurethane)

D: BSP / NPT connection: 1" stainless steel, to provide hygienic potable water.

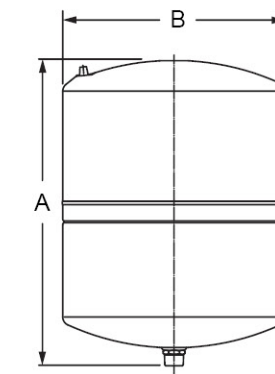
E: Inner liner: Food grade PP (Polypropylene)

F: Thank feet & pump stand: Environment-friendly plastic



Model	Capacity		Resistant Pressure (bar)	Precharge Pressure		Temperature Range	Dimentions (mm)		Connection
	Litre	Gallon		bar	psi		A	B	
LEO-12LH-PW	12	3	8-10-16	2	29	-10°C ~ 100°C	352	280	1" BSP / NPT
LEO-19LH-PW	19	5	8-10-16	2	29	-10°C ~ 100°C	370	306	1" BSP / NPT
LEO-24LH-PW	24	6	8-10-16	2	29	-10°C ~ 100°C	425	334	1" BSP / NPT
LEO-36LH-PW	36	9	8-10-16	2	29	-10°C ~ 100°C	415	384	1" BSP / NPT
LEO-50LH-PW	50	13	8-10-16	3	44	-10°C ~ 100°C	570	384	1" BSP / NPT
LEO-60LH-PW	60	16	8-10-16	3	44	-10°C ~ 100°C	613	384	1" BSP / NPT
LEO-80LH-PW	80	21	8-10-16	3	44	-10°C ~ 100°C	670	435	1" BSP / NPT
LEO-100LH-PW	100	26	8-10-16	3	44	-10°C ~ 100°C	712	544	1" BSP / NPT
LEO-150LH-PW	150	40	8-10-16	3	44	-10°C ~ 100°C	855	544	1" BSP / NPT

Technical Data



Model	Capacity		Resistant Pressure (bar)	Precharge Pressure		Temperature Range	Dimentions (mm)		Connection
	Litre	Gallon		bar	psi		A	B	
LEO-2LV-PW	2	1	8-10-16	2	29	-10°C ~ 100°C	250	160	1" BSP / NPT
LEO-5LV-PW	5	1	8-10-16	2	29	-10°C ~ 100°C	300	160	1" BSP / NPT
LEO-8LV-PW	8	2	8-10-16	2	29	-10°C ~ 100°C	330	200	1" BSP / NPT
LEO-12LV-PW	12	3	8-10-16	2	29	-10°C ~ 100°C	352	240	1" BSP / NPT
LEO-19LV-PW	19	5	8-10-16	2	29	-10°C ~ 100°C	370	270	1" BSP / NPT
LEO-24LV-PW	24	6	8-10-16	2	29	-10°C ~ 100°C	425	300	1" BSP / NPT
LEO-36LV-PW	36	10	8-10-16	2	29	-10°C ~ 100°C	415	350	1" BSP / NPT
LEO-50LV-PW	50	13	8-10-16	3	44	-10°C ~ 100°C	570	350	1" BSP / NPT
LEO-60LV-PW	60	16	8-10-16	3	44	-10°C ~ 100°C	613	350	1" BSP / NPT