



Application

- The lifting station is suitable for pumping of wastewater off places in private dwellings and basements where wastewater cannot be led directly to the sewer by means of a natural downward slope.
- It is typically used for:
 - Renovation of offices or other commercial buildings.
 - Wall-mounted toilets in basements below sewer level.
 - Washing machines & dish washers.
 - Toilets, wash basins, bathtubs and cabinet showers in the bathrooms where the location may be remote from the main soil pipe so that a natural slope cannot be established.

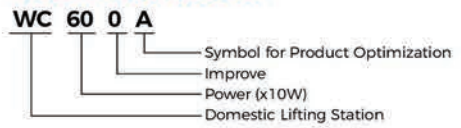
Features

- Compact and slim for easy installation
- Automatic start and stop
- Top quality air switch and carbon filter from Germany
- Circuit board with time delay function and low voltage protection
- Low noise
- New blade and support with better cutting performance
- Suitable for sewage water containing toilet paper and faeces with cutting blade

Operating Conditions

- Max. liquid temperature: 50°C
- Max. ambient temperature: 35°C
- PH value: 4 - 10
- The pump must not be used for strong chemicals or solvents

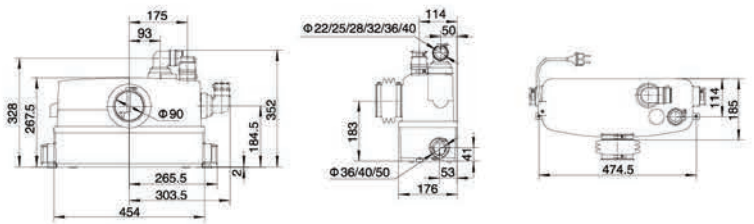
Identification Codes



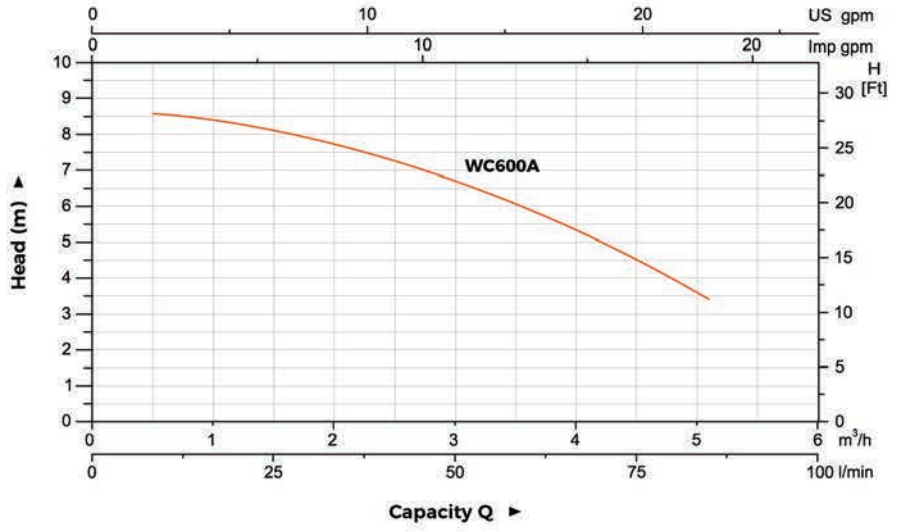
Technical Data

Model	Power W	Q(m ³ /h) Q(l/min)	0	2.4	3	3.6	4.5	4.8	5.1
			H(m)	40	50	60	75	80	85
WC600A	600	H(m)	8.5	7.5	6.5	6	4.5	4	3.3

Dimension

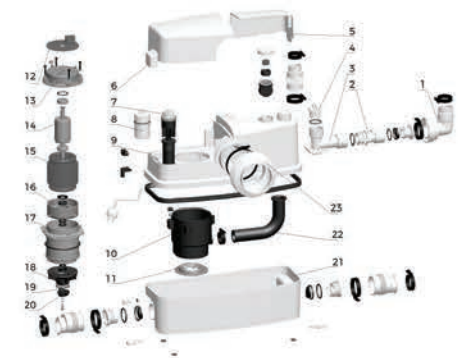


Hydraulic Performance Curves



Material Table

No.	Part	Material	No.	Part	Material
1	Outlet	EPDM	13	Upper cover	ADC12
2	Connector	PP	14	Rotor	
3	3-Way	PP	15	Stator	
4	Cover	PP	16	Bearing seat	ADC12
5	Outlet cover	ABS	17	Stator shield	ZG 304
6	Motor cover	ABS	18	Impeller	PPO
7	Air switch		19	Cutting blade	AISI 304
8	Capacitor		20	Stirrer	PPO
9	Tank cover	ABS	21	Water tank	ABS
10	Pump body	PP	22	Outlet	NBR
11	Cutting ring	AISI 304	23	Feed pipe	EPDM
12	Circuit board				



Package Information

Model	CW (Kgs)	L (mm)	W (mm)	H (mm)	Quantity (PCS/20' TEU)
WC600A	9.6	495	215	374	720

