



Application

- LSW series submersible sewage pumps are suitable for buildings, hospitals, residential quarters, municipal engineering, road traffic and construction, factory sewage, sewage treatment, and other occasions. It is used to discharge wastewater, rainwater, and sewage containing solid particles.

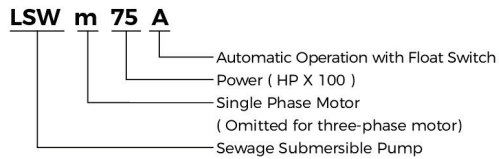
Pump

- Stainless steel shell
- Cast Iron Pump body with special anti-rust treatment
- Fixed cable with unique design
- AISI 304 shaft
- Max.liquid temperature:40°C

Motor

- Motor with copper winding
- Built-in thermal protector for single phase motor
- Insulation class:F
- Enclosures class: IPX8

Identification Codes

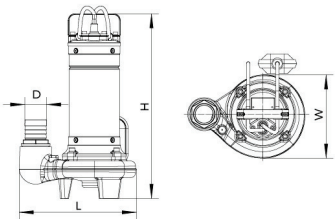


Technical Data

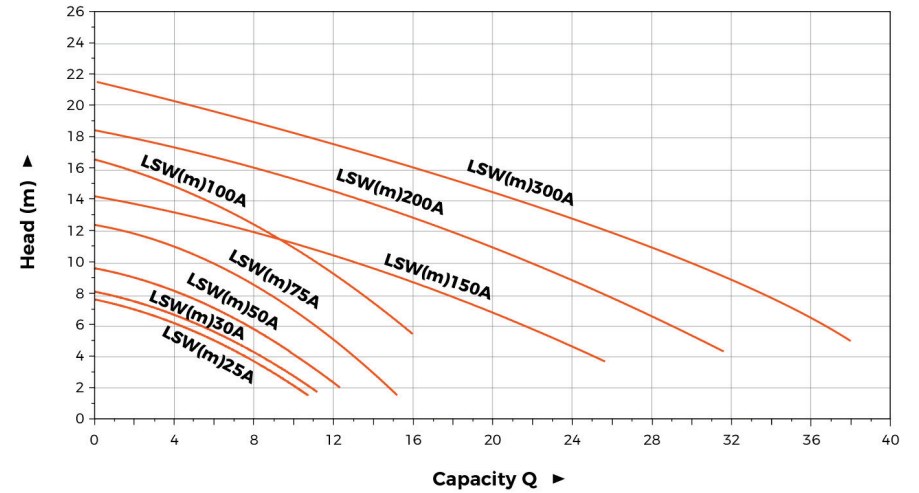
Model	Power		Voltage/Frequency V/Hz	Outlet	Q.Max m³/h	H.Max m	Max.dia. of prarticle mm
	kW	HP					
LSWm25(A)	0.18	0.25	180-220/50	G1.5	11	8	15
LSWm30(A)	0.25	0.37	180-220/50	G1.5	12	9	15
LSWm50(A)	0.37	0.5	180-220/50	G1.5	13	11	20
LSWm75(A)	0.55	0.75	180-220/50	G2	16	13.5	25
LSWm100(A)	0.75	1.0	180-220/50	G2	19	17	25
LSWm150(A)	1.1	1.5	180-220/50	G2	26	13.5	30
LSWm200(A)	1.5	2.0	180-220/50	G2	32	19	30
LSWm300(A)	2.2	3	180-220/50	G2	34.5	23	30

Dimension

Model	D (mm)	L (mm)	W (mm)	H (mm)
LSWm25(A)	G1.5/40	221	158	362
LSWm30(A)	G1.5/40	221	158	362
LSWm50(A)	G1.5/40	221	158	372
LSWm75(A)	G2/50	260	185	410
LSWm100(A)	G2/50	260	185	410
LSWm150(A)	G2/50	269	186	450
LSWm200(A)	G2/50	269	186	470
LSWm300(A)	G2/50	269	186	470

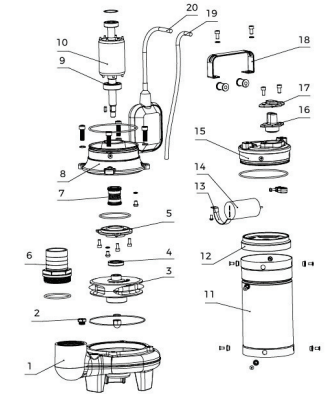


Hydraulic Performance Curves



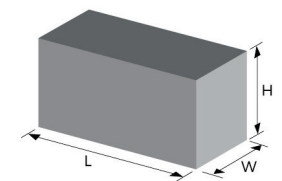
Material Table

No.	Part	Material	No.	Part	Material
1	Pump body	HT 200	11	Stator	
2	Exhaust valve	HP59-1	12	Upper cover	ADC 12
3	Impeller	HT 200	13	Capacitor clamp	Q235
4	Oil seal		14	Capacitor	
5	Oil chamber cover	HT 200	15	Top cover	HT 200
6	Connector	ABS	16	Cable sheathing	Neoprene
7	Mechanical seal	SiC/Carbon +Carbon/Ceramic	17	Cable cover	AISI 304
8	Oil chamber	HT 200	18	Handle	AISI 304
9	Bearing		19	Cable line	
10	Rotor	45# + AISI 304	20	Float switch	



Package Information

Model	CW (Kgs)	L (mm)	W (mm)	H (mm)	Quantity (PCS/20'TEU)
LSWm25(A)	10.25	235	230	425	1218
LSWm30(A)	10.45	235	230	425	1218
LSWm50(A)	10.8	235	230	425	1218
LSWm75(A)	14.5	310	230	475	826
LSWm100(A)	14.5	310	230	475	826
LSWm150(A)	18.6	315	230	515	750
LSWm200(A)	20.45	315	230	535	722
LSWm300(A)	22.3	315	230	555	696





Application

- LSW series submersible sewage pumps are suitable for buildings, hospitals, residential quarters, municipal engineering, road traffic and construction, factory sewage, sewage treatment, and other occasions. It is used to discharge wastewater, rainwater, and sewage containing solid particles.

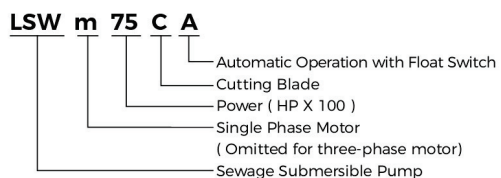
Pump

- Stainless steel shell
- Cast Iron Pump body with special anti-rust treatment
- Fixed cable with unique design
- AISI 304 shaft
- Max.liquid temperature:40°C

Motor

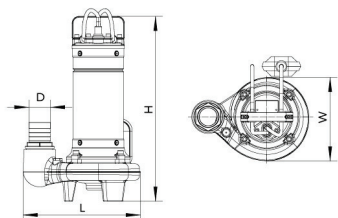
- Motor with copper winding
- Built-in thermal protector for single phase motor
- Insulation class:F
- Enclosures class: IPX8

Identification Codes



Technical Data

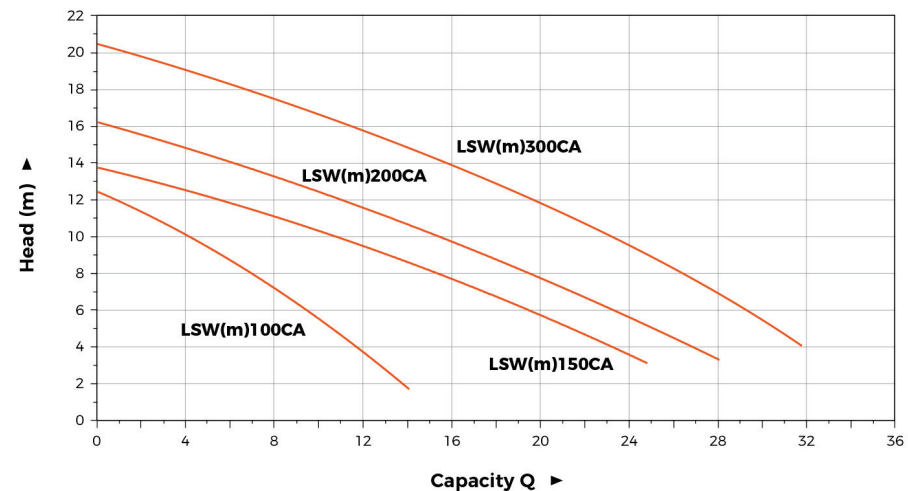
Model	Power		Voltage/Frequency V/Hz	Outlet	Q.Max m³/h	H.Max m
	kW	HP				
LSWm100CA	0.75	1.0	180-220/50	G2	15	13
LSWm150CA	1.1	1.5	180-220/50	G2	25	14
LSWm200CA	1.5	2.0	180-220/50	G2	30	17
LSWm300CA	2.2	3.0	180-220/50	G2	32	21.5



Dimension

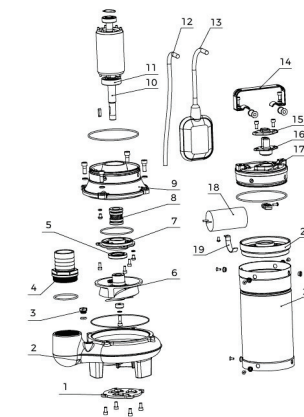
Model	D (mm)	L (mm)	W (mm)	H (mm)
LSWm100CA	G2/50	260	185	403
LSWm150CA	G2/50	269	186	446
LSWm200CA	G2/50	269	186	460
LSWm300CA	G2/50	269	186	480

Hydraulic Performance Curves



Material Table

No.	Part	Material	No.	Part	Material
1	Cutting blade	AISI 304	12	Cable line	
2	Pump body	HT 200	13	Float switch	
3	Exhaust valve	HP59-1	14	Handle	AISI 304
4	Connector	ABS	15	Cable cover	AISI 304
5	Oil seal		16	Cable sheathing	Neoprene
6	Impeller	HT 200	17	Top cover	HT 200
7	Oil chamber cover	HT 200	18	Capacitor	
8	Mechanical seal	SiC/Carbon +Carbon/Ceramic	19	Capacitor clamp	Q235
9	Oil chamber	HT 200	20	Upper cover	ADC 12
10	Rotor	45# + AISI 304	21	Stator	
11	Bearing				



Package Information

Model	GW (Kgs)	L (mm)	W (mm)	H (mm)	Quantity (PCS/20'TEU)
LSWm100CA	14.8	310	230	468	839
LSWm150CA	18.55	315	230	510	757
LSWm200CA	19.95	315	230	525	736
LSWm300CA	21.35	315	230	555	696

