



0.75kW-7.5kW



9.2kW-55kW

Application

- Circulation and transfer of clean, chemically non-aggressive water and other liquids
- Water supply & irrigation
- Water circulation in air conditioning systems
- Fire fighting system

Operating Conditions

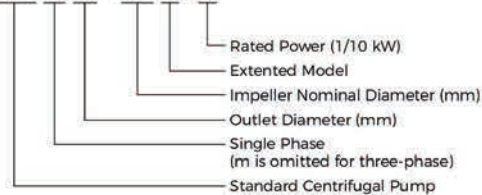
- Delivery: up to 210 m³/h
- Head: up to 95 m
- Liquid temperature: Standard -10°C to 85°C
- Maximum operating pressure: 12 bar (PN12)
- Anti-clockwise rotation when facing pump's suction port
- Impeller: AISI304 , HT200
- Mechanical seal in compliance with DIN 24960
- Lubricated by internal recirculating pumped liquid
- Counter flange available on request

Motor

- Closed construction, external ventilation
 - Insulation class: F
 - Enclosures class: IP54
 - Performance in compliance with CEI 2-3 (IEC 34.1)
 - Max.ambient temperature: +40°C
 - Overload protection
 - For model that ≥9.2kw. Equipped with IE2 motor. IE3 motor available on request.
- For model that ≤7.5kw, the following 4 models can be equipped with IE3 motor. (XST40-160/30, XST40-160/40, XST50-160/55, XST50-160/75)

Identification Codes

XST m 32 - 125 K / 11

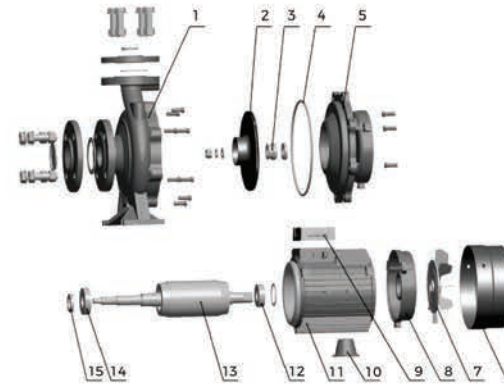


Construction Features

- Single- impeller centrifugal pump featuring axial intake and radial discharge
- Inlet and outlet DN in compliance with EN 733 (ex DIN 24255) and UNI 7467
- Flanges in compliance with UNI 2236 and DIN 2532 Rear entry (impeller, motor can be extracted without disconnecting the pump body from the pipes)

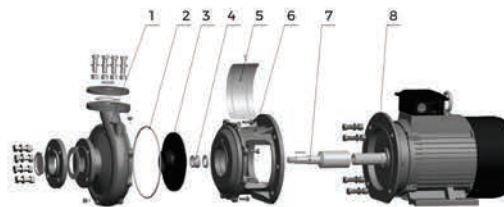
Material Table

Exploded diagram of 7.5 kW and below



No.	Part	Material
1	Pump body	HT200
2	Impeller	HT200 / 06Cr19Ni10
3	Mechanical seal	
4	O-ring	NBR
5	Connection body	HT200
6	Wind cover	08F
7	Fan	PP
8	Back cover	ZL102
9	Cover box	ABS
10	Brace	HT200
11	Stator	
12	Bearing	
13	Rotor	
14	Bearing	
15	Skeleton seal	

Exploded diagram above 7.5 kW



No.	Part	Material
1	Pump body	HT200
2	O-ring	NBR
3	Impeller	HT200 / 06Cr19Ni10
4	Machinery Seal	
5	Guard plate	06Cr19Ni10
6	Connection body	HT200
7	Pump shaft	45/06Cr19Ni10
8	Motor	

Performance Parameter

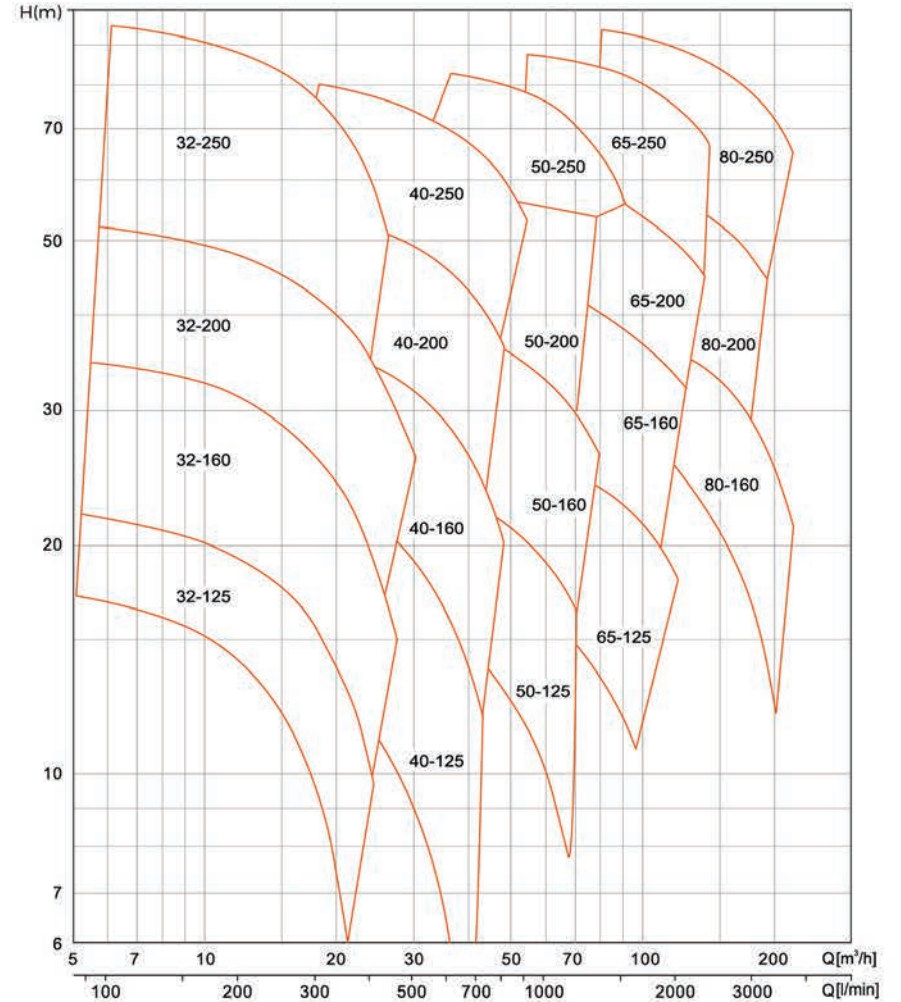
Model	Power		Q(m³/h)	H (m)																			
	kW	HP		0	6	9	15	18	24	27	36	42	48	54	72	84	90	108	120	138	180	210	
			Q(l/min)	0	100	150	250	300	400	450	600	700	800	900	1200	1400	1500	1800	2000	2300	3000	3500	
32-125/7*	0.75	1		17.5	16.7	15	12	9															
32-125/11*	1.1	1.5		22	21	20.2	17	15	9														
32-160/15*	1.5	2		24	23.7	22.5	19.5	16.2															
32-160/22*	2.2	3		31	29.6	29	25.5	22.5	15														
32-160/30*	3	4		34.5	33.5	33	29	26.5	20	16.5													
32-200/30*	3	4		43.2	42	40.5	35.2	32.2	24.6	19.8													
32-200/40*	4	5.5		52	50.5	50	45	41.9	35	30.3													
32-250/55**	5.5	7.5		79	74.7	71.8	63	56	37.5														
32-250/75**	7.5	10		95	92	89	82	75	57.8	48													
40-125/11	1.1	1.5		14.7				13	11.5	10.1													
40-125/15	1.5	2		18.1				17	15	13.9													
40-125/22	2.2	3		24.5				23.2	21.5	20.2	16	12											
40-160/30	3	4		31.8				29	27.5	26.3	21.5	17.5											
40-160/40	4	5.5		38				36	34	33	28.5	25	20.1										
40-200/55*	5.5	7.5		44				42	40	38	32	27											
40-200/75*	7.5	10		55				52	49	48	42	37	32										
40-250/92*	9.2	12.5		64				59	56.5	55	49.5	45	39.8										
40-250/110*	11	15		72				67.5	65	63.5	57.5	52.2	47										
40-250/150*	15	20		82				79	77.3	76.5	71	66	60.5	54.8									
50-125/22	2.2	3		17						15.4	14	12.8	11.5										
50-125/30	3	4		20						18.8	18	17	15.6										
50-125/40	4	5.5		24						23.1	22.6	21.5	20.3	15.8									
50-160/55	5.5	7.5		32						30.6	30	28	26.6	20.5									
50-160/75	7.5	10		40						38	37	36	34.4	29									
50-200/92*	9.2	12.5		50.5						46.8	45	43	40.9	32.5									
50-200/110*	11	15		57.5						53.5	52	50	47.5	40									
50-250/150*	15	20		68.5						64	63	61.5	59	50	41								
50-250/185*	18.5	25		77						73.2	72	70	68	60.5	51.5								
50-250/220*	22	30		86.3						83	81.5	80	78	70	61								
65-125/40	4	5.5		19							17.3	16.8	14.5	13	11.8								
65-125/55	5.5	7.5		23							21.3	20.9	19	17.5	16.7	13.7							
65-125/75	7.5	10		27							26	25.6	24.5	23	22.5	20	18						
65-160/92	9.2	12.5		33								31.5	30	28	27.1	24	21.5						
65-160/110	11	15		36								34.5	33	31.5	30.8	28	25.5						
65-160/150	15	20		42								41	40	38.5	37.8	35	33						
65-200/150	15	20		45.5								46	43.5	41	39.2	33							
65-200/185	18.5	25		53								53.5	51.2	48.3	47	41.5							
65-200/220	22	30		59								59.5	57.2	54	53	47	43.5						
65-200K/185	18.5	25		41.2									42	41.2	40.6	38.2	36.5	34					
65-200K/220	22	30		48										48	47.5	46	44	41					
65-200K/300	30	40		59.5										59	58.5	58	56.2	54					
65-250/220	22	30		62										61.5	58.2	56.5	54	49	45	36			
65-250/300	30	40		76										75	73	70	69	64	61	54			
65-250/370	37	50		90										88	86	84	82	78	74	68			
80-160/110	11	15		27											27.3	26	24.5	22.5	16				
80-160/150	15	20		32.8											32.5	31.3	30.2	28	22.1	16.7			
80-160/185	18.5	25		39											38	36.8	35.7	33.8	28.8	23.5			
80-200/220	22	30		48											47.5	46	43.5	41	32.5				
80-200/300	30	40		60											59.5	58	57	54.5	47				
80-250/370	37	50		71.5											70.5	67.5	65.5	61.5	49.5	38			
80-250/450	45	61		82											80.5	78.5	76.5	72	62	51			
80-250/550	55	75		95											93.5	91.2	89.8	86.8	77.6	68.3			

*-Stainless steel impeller

**-Two-stage stainless steel impeller

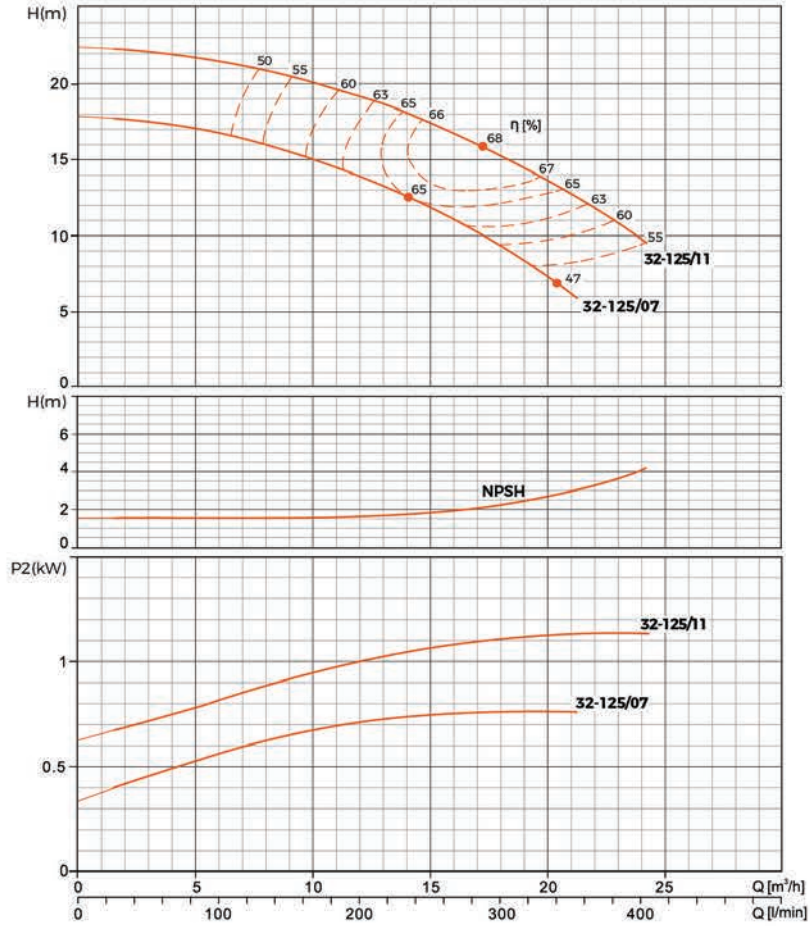
Characteristic Curves

XST	Rated speed: 2900r/min	ISO 9906 Annex A
-----	------------------------	------------------



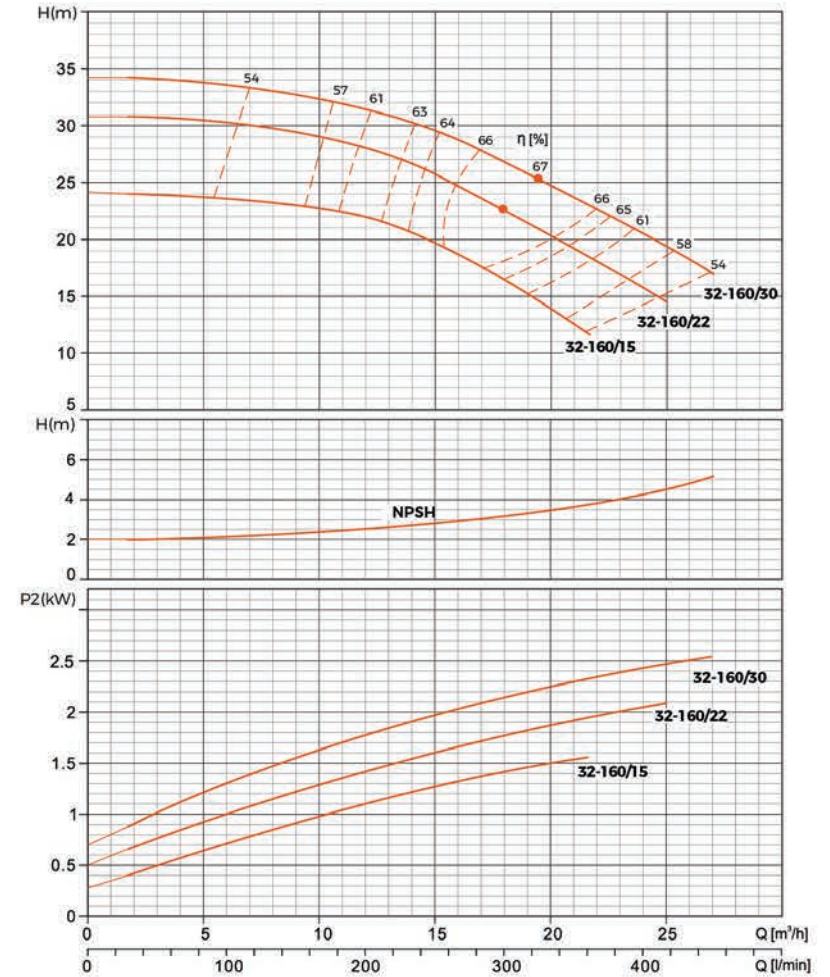
Hydraulic Performance Curves

XST32-125	Rated speed: 2900r/min	ISO 9906 Annex A
-----------	------------------------	------------------



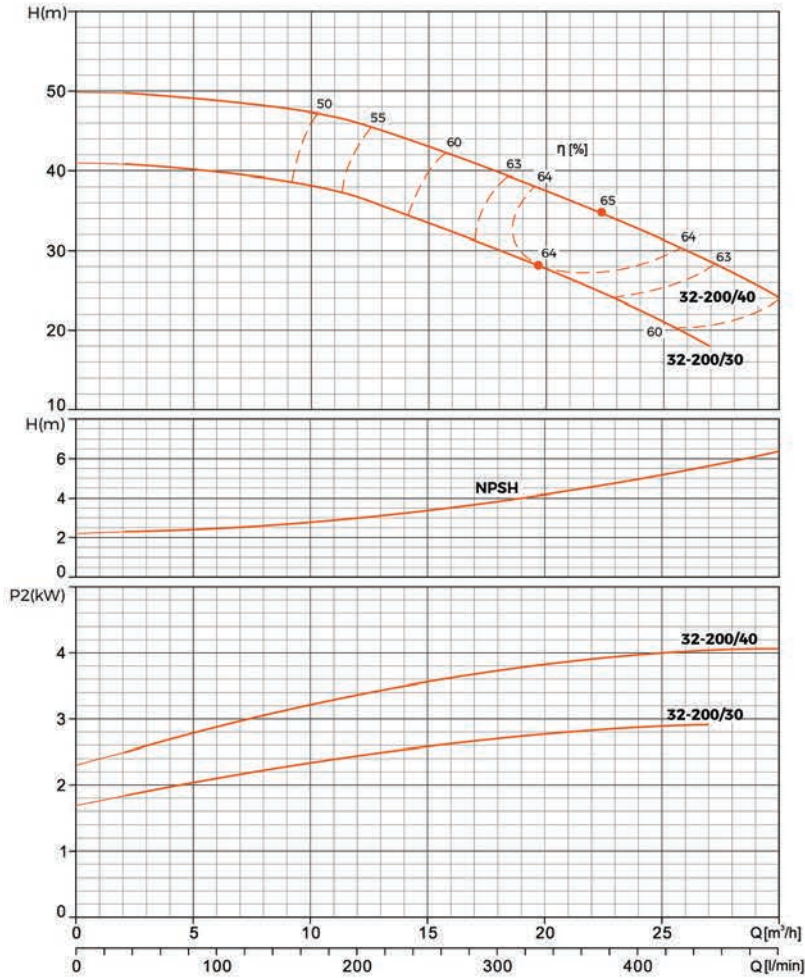
Hydraulic Performance Curves

XST32-160	Rated speed: 2900r/min	ISO 9906 Annex A
-----------	------------------------	------------------



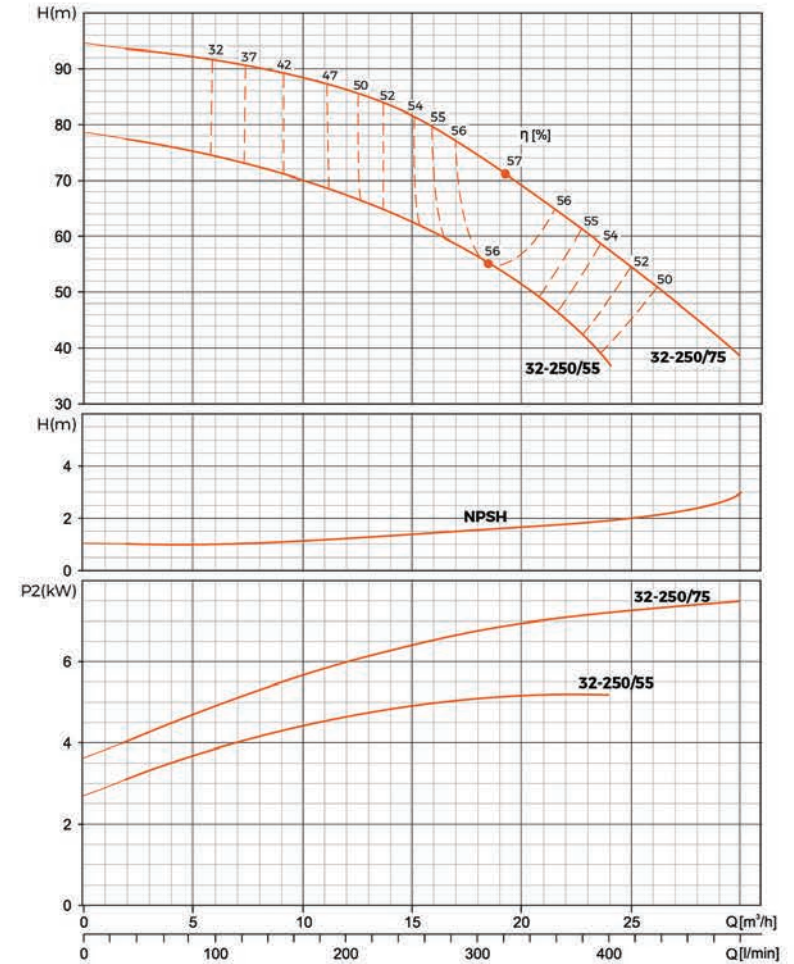
Hydraulic Performance Curves

XST32-200	Rated speed: 2900r/min	ISO 9906 Annex A
-----------	------------------------	------------------



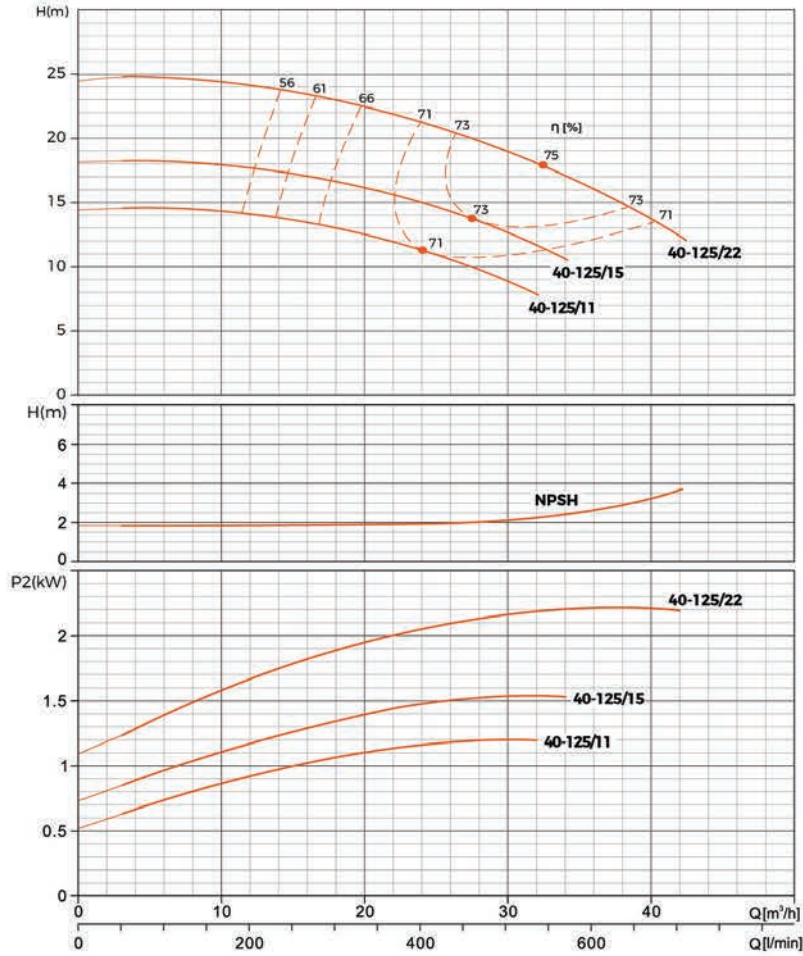
Hydraulic Performance Curves

XST32-250	Rated speed: 2900r/min	ISO 9906 Annex A
-----------	------------------------	------------------



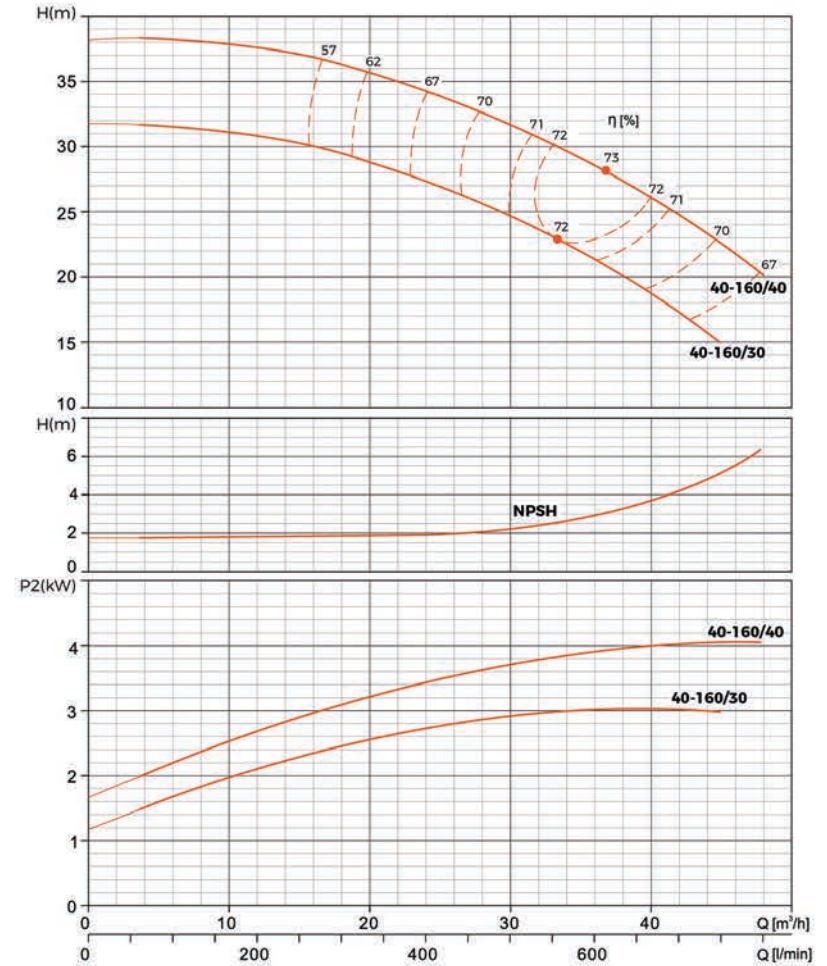
Hydraulic Performance Curves

XST40-125	Rated speed: 2900r/min	ISO 9906 Annex A
-----------	------------------------	------------------



Hydraulic Performance Curves

XST40-160	Rated speed: 2900r/min	ISO 9906 Annex A
-----------	------------------------	------------------

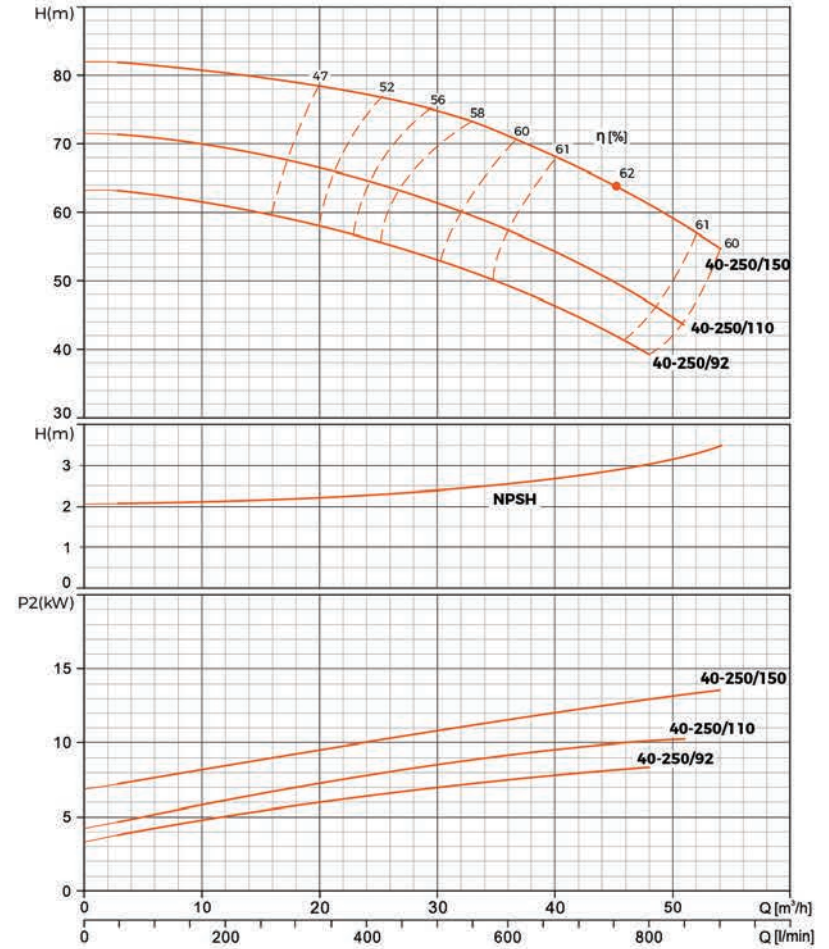
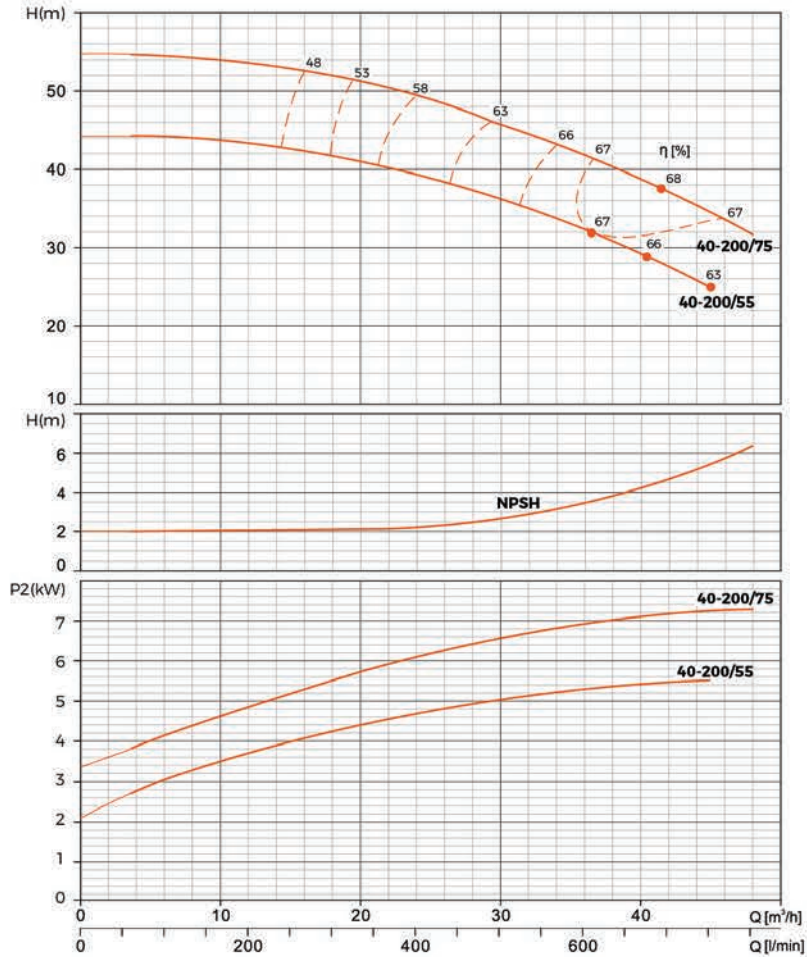


Hydraulic Performance Curves

XST40-200	Rated speed: 2900r/min	ISO 9906 Annex A
-----------	------------------------	------------------

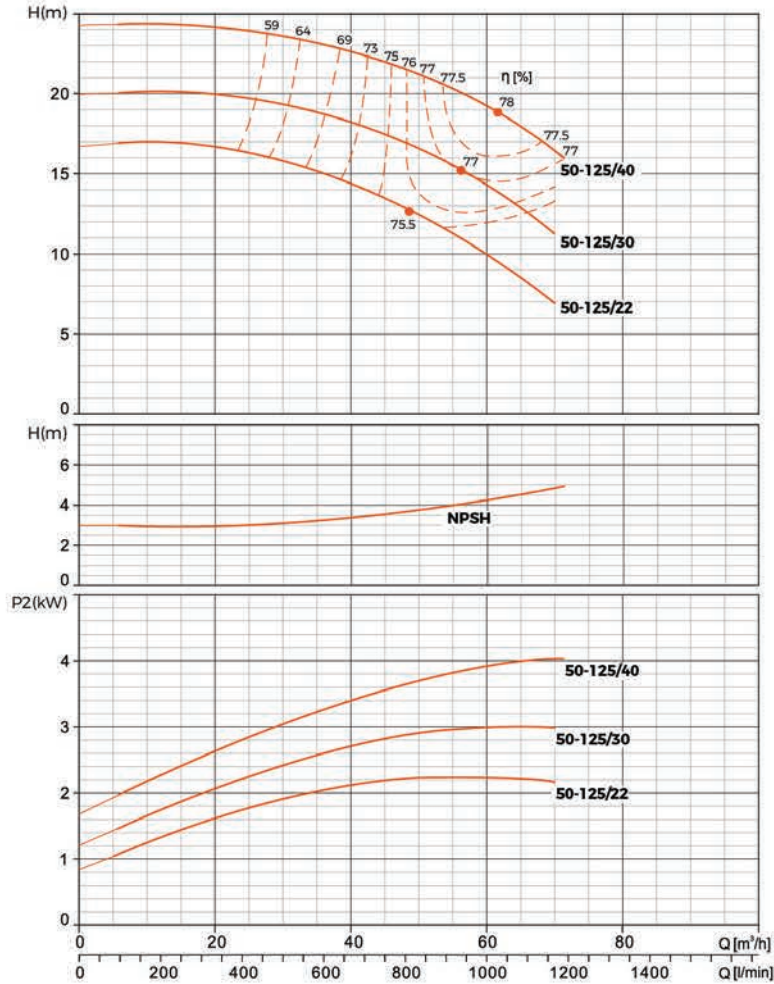
Hydraulic Performance Curves

XST40-250	Rated speed: 2900r/min	ISO 9906 Annex A
-----------	------------------------	------------------



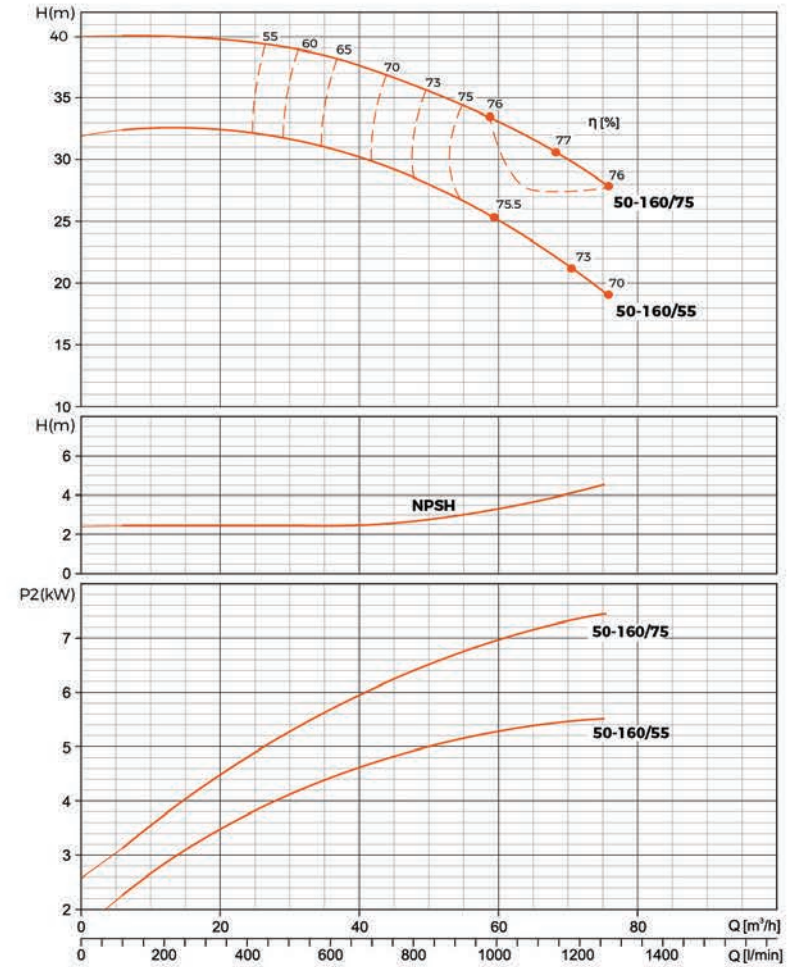
Hydraulic Performance Curves

XST50-125	Rated speed: 2900r/min	ISO 9906 Annex A
-----------	------------------------	------------------



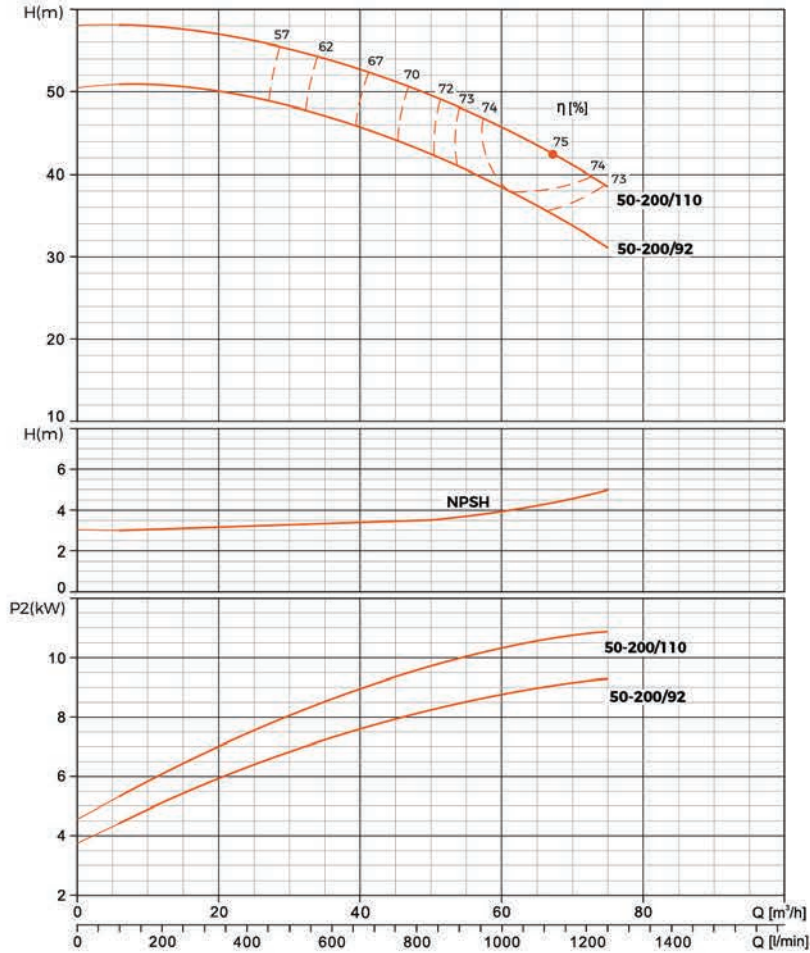
Hydraulic Performance Curves

XST50-160	Rated speed: 2900r/min	ISO 9906 Annex A
-----------	------------------------	------------------



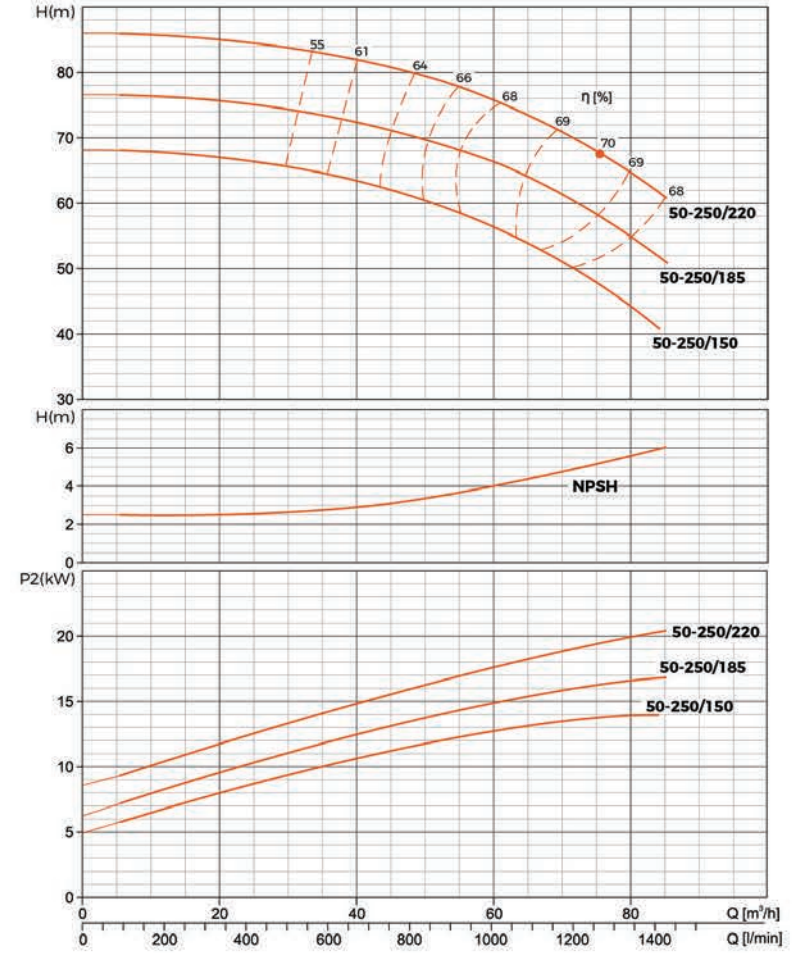
Hydraulic Performance Curves

XST50-200	Rated speed: 2900r/min	ISO 9906 Annex A
-----------	------------------------	------------------



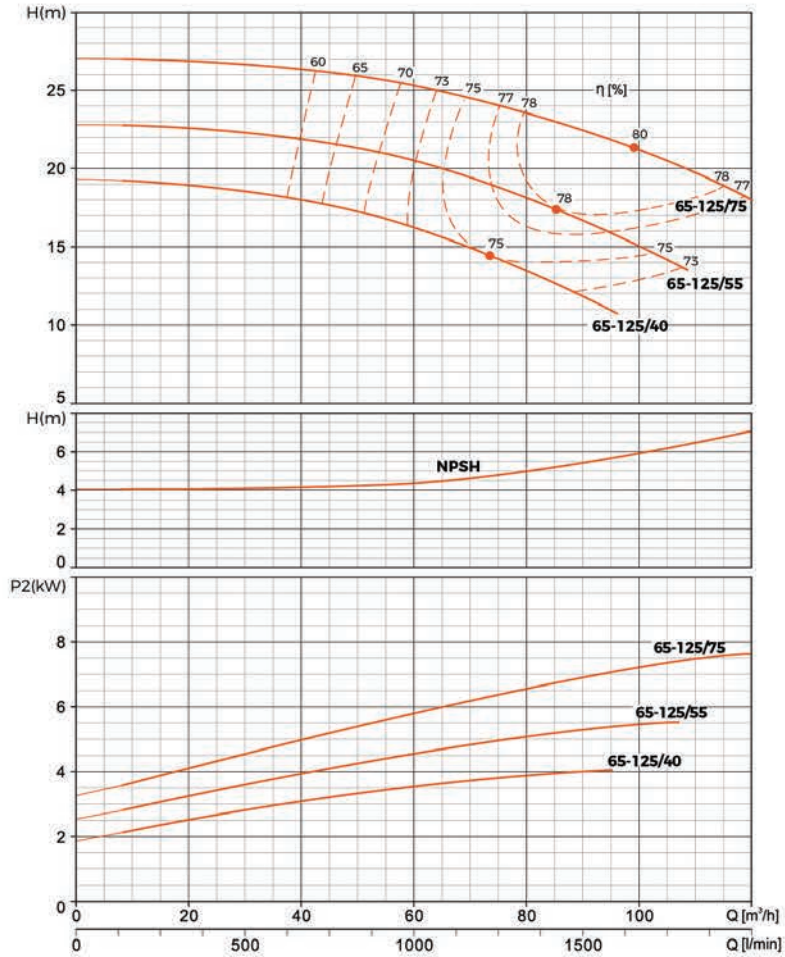
Hydraulic Performance Curves

XST50-250	Rated speed: 2900r/min	ISO 9906 Annex A
-----------	------------------------	------------------



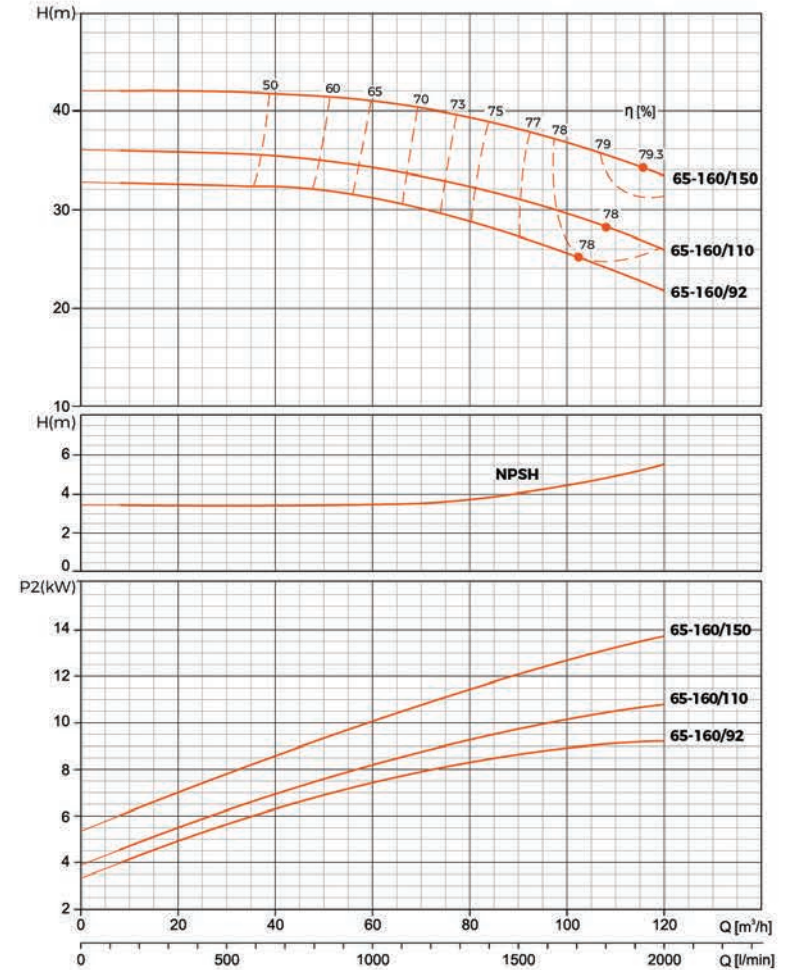
Hydraulic Performance Curves

XST65-125	Rated speed: 2900r/min	ISO 9906 Annex A
-----------	------------------------	------------------



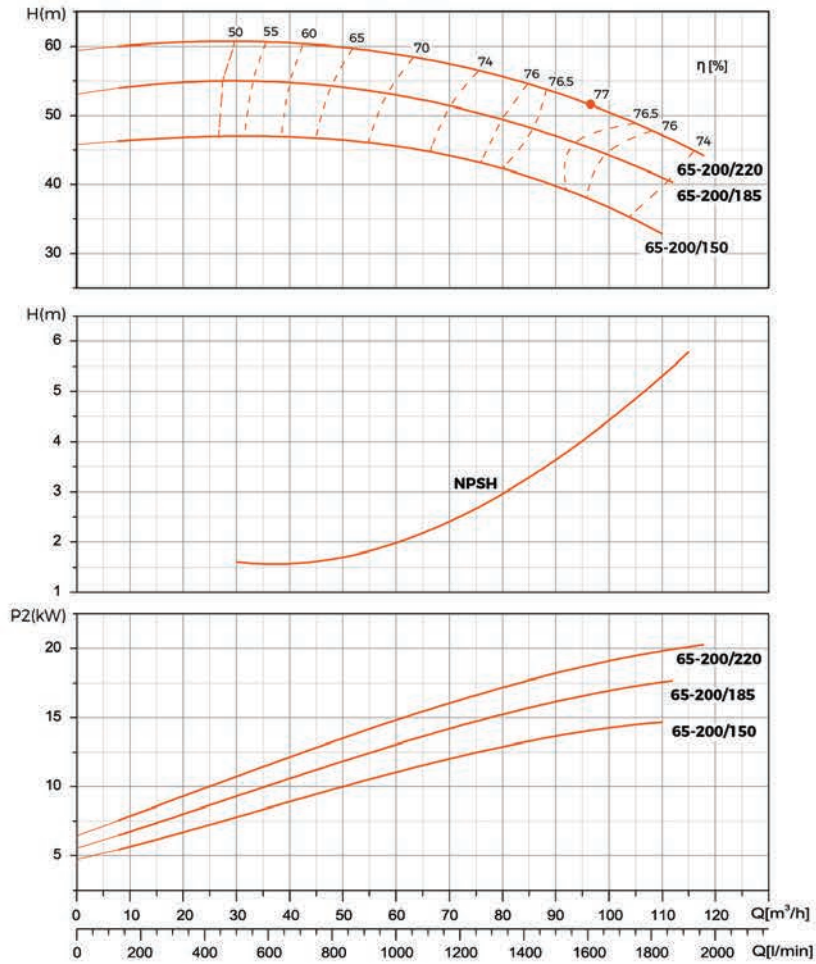
Hydraulic Performance Curves

XST65-160	Rated speed: 2900r/min	ISO 9906 Annex A
-----------	------------------------	------------------



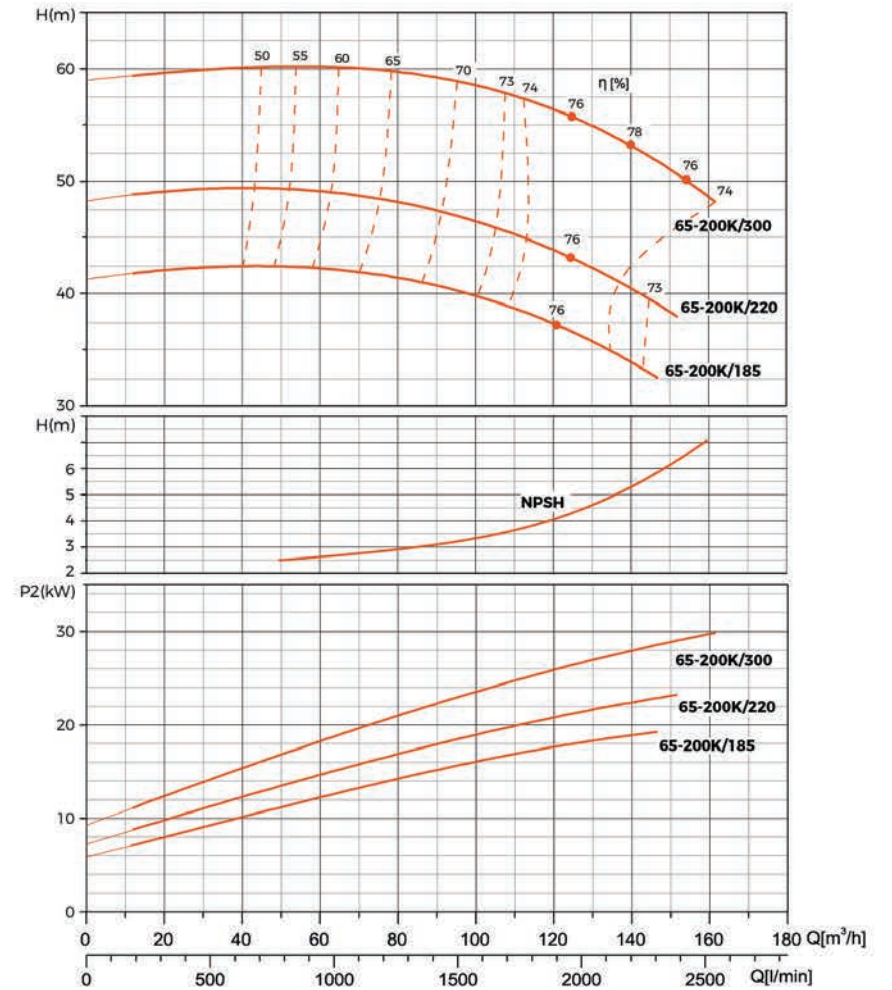
Hydraulic Performance Curves

XST65-200	Rated speed: 2900r/min	ISO 9906 Annex A
-----------	------------------------	------------------



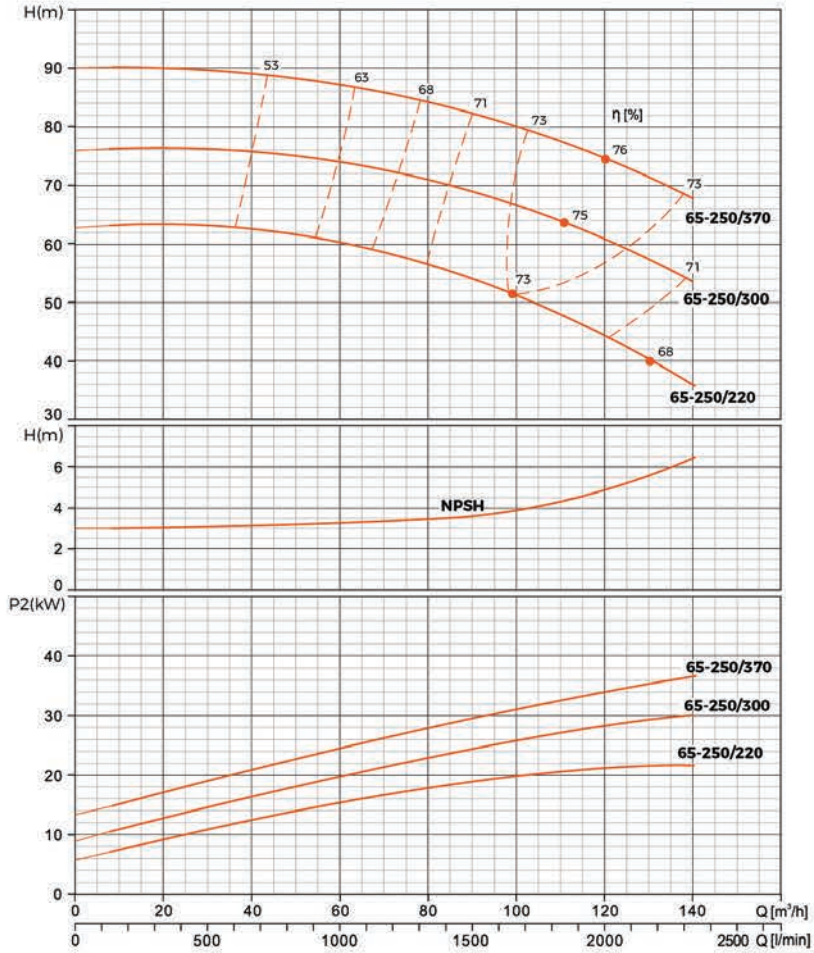
Hydraulic Performance Curves

XST65-200K	Rated speed: 2900r/min	ISO 9906 Annex A
------------	------------------------	------------------



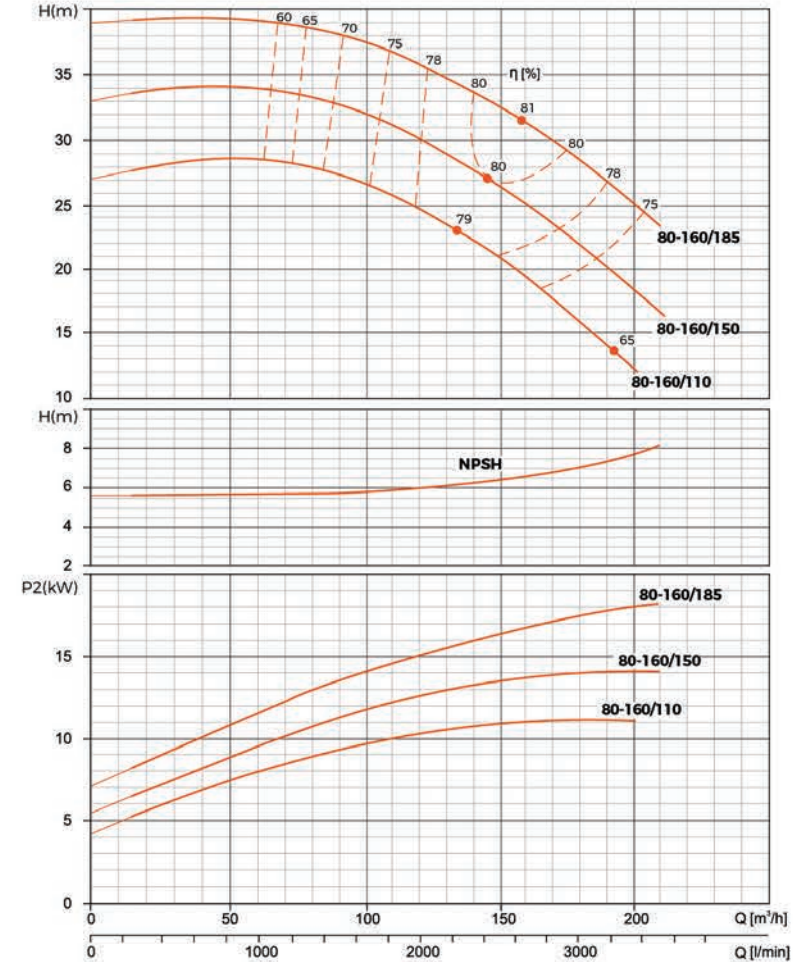
Hydraulic Performance Curves

XST65-250	Rated speed: 2900r/min	ISO 9906 Annex A
-----------	------------------------	------------------



Hydraulic Performance Curves

XST80-160	Rated speed: 2900r/min	ISO 9906 Annex A
-----------	------------------------	------------------

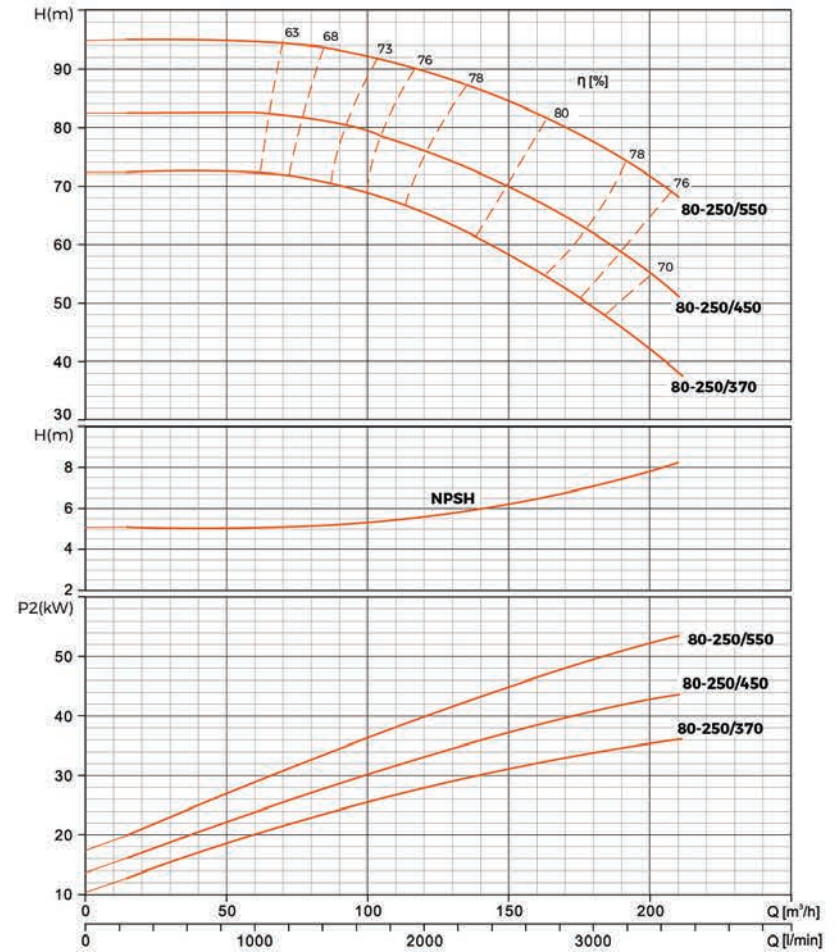
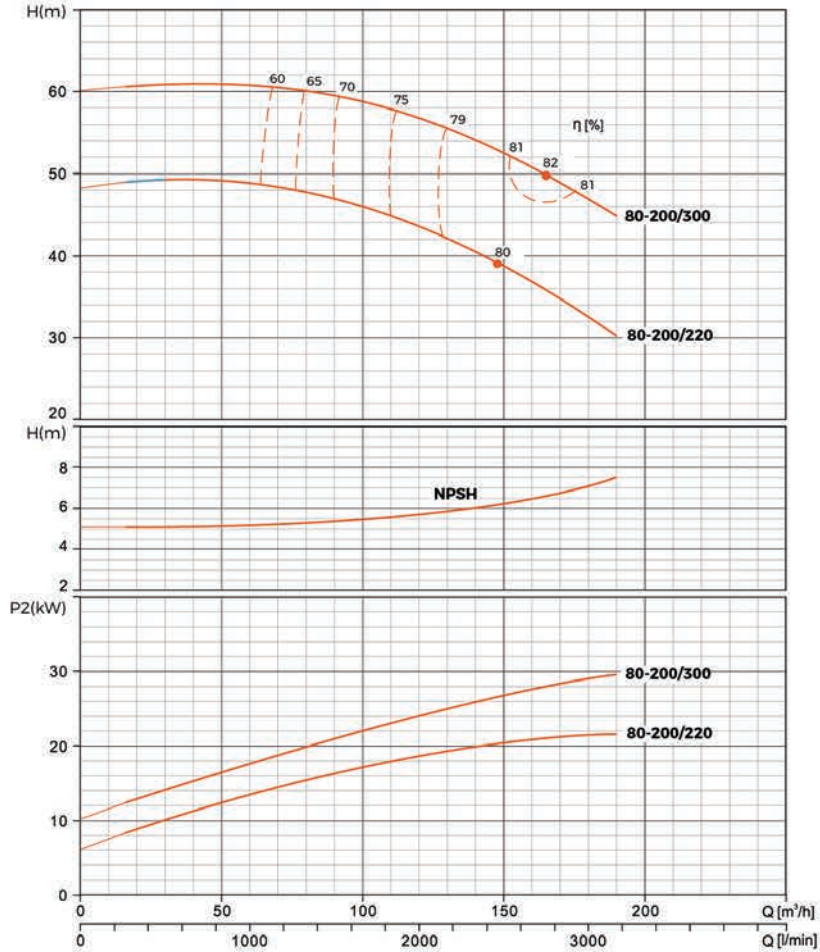


Hydraulic Performance Curves

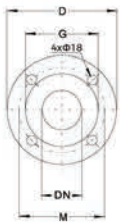
XST80-200	Rated speed: 2900r/min	ISO 9906 Annex A
-----------	------------------------	------------------

Hydraulic Performance Curves

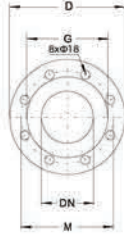
XST80-250	Rated speed: 2900r/min	ISO 9906 Annex A
-----------	------------------------	------------------



Flange Size



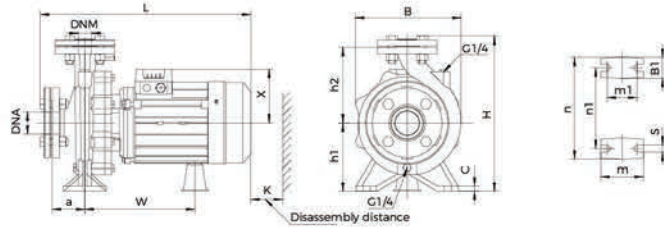
DN	D	M	G	Max. thickness
32	140	100	78	18
40	150	110	88	18
50	165	125	102	20
65	185	145	122	20



DN	D	M	G	Max. thickness
80	200	160	138	22
100	220	180	158	24

Outline Drawing and Outline Size

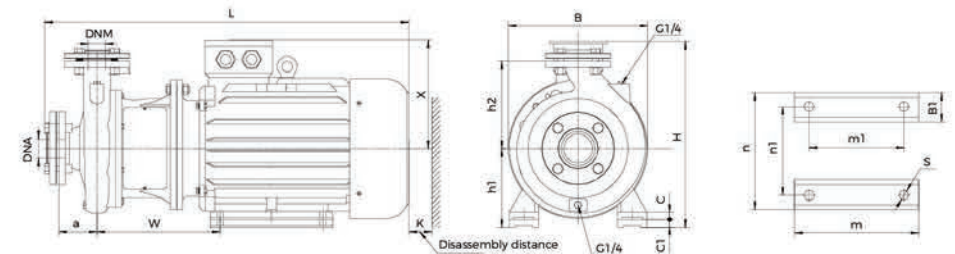
Less than or equal to 7.5 kW



Model	DNM	DNA	a	h2	w	x	B1	c	h1	m	m1	n	n1	s	B	H	L	K																																											
XST32-125/7	32	50	80	140	223	113	50	12	112	100	70	190	140	15	197	278	427	85																																											
XSTm32-125/7						123																																																							
XST32-125/11						113																																																							
XSTm32-125/11						123																																																							
XST32-160/15						116																																																							
XSTm32-160/15			123																																																										
XST32-160/22			116	160	231	141	16	132	14	242	318	240	190	14	242	318	498	95																																											
XSTm32-160/22			141																																																										
XST32-160/30			130																																																										
XSTm32-160/30			141																																																										
XST32-200/30	127																																																												
XST32-200/40	127	180	258	127	12	160	100	70	272	212	308	384	614	636	60																																														
XST32-250/55	154															198	263	179	60	15	272	212	308	384	614	636	60																																		
XST32-250/75	120																											170	262	127	52	12	100	70	240	190	15	271	367	567	589	110																			
XST40-125/11	128																																										140	203	120	50	12	112	100	70	210	160	15	218	279	483	95				
XSTm40-125/11	120																																																									140	203	120	50
XST40-125/15	128	140	203	128	50	12	112	100	70	210	160	15	218	279	483																																														
XSTm40-125/15	130															140	203	128	50	12	112	100	70	210	160	15	218																																		
XST40-125/22	141																											140	203	130	50	12	112	100	70	210	160	15	218	279	483	95																			
XSTm40-125/22	141																																										140	203	130	50	12	112	100	70	210	160	15	218	279	483	95				
XST40-160/30	127																																																									168	127	132	100
XST40-160/40	127	168	127	132	100	70	240	190	15	271	367	567	589	110																																															
XST40-200/55	127														168	127	132	100	70	240	190	15	271	367	567	589	110																																		
XST40-200/75	127																											168	127	132	100	70	240	190	15	271	367	567	589	110																					
XST50-125/22	127																																								170	262	127	52	12	100	70	15	271	367	567	589	110								
XSTm50-125/22	141																																																					170	262	127	52	12	100	70	15
XST50-125/30	127	170	262	127	52	12	100	70	15	271	367	567	589	110																																															
XST50-125/40	127														170	262	127	52	12	100	70	15	271	367	567	589	110																																		
XST50-160/55	127																											170	262	127	52	12	100	70	15	271	367	567	589	110																					
XST50-160/75	127																																								170	262	127	52	12	100	70	15	271	367	567	589	110								
XST65-125/40	127																																																					180	179	160	125	95	280	212	15
XST65-125/55	127	180	179	160	125	95	280	212	15	282	371	577	600	120																																															
XST65-125/75	127														180	179	160	125	95	280	212	15	282	371	577	600	120																																		

Outline Drawing and Outline Size

Greater than 7.5 kW



Model	DNM	DNA	a	h2	w	x	B1	C	C1	h1	m	m1	n	n1	s	B	H	L	K			
XST40-250/92	40	65	100	225	312	255	65	20	20	180	260	210	314	254	14.5	350	445	840	110			
XST40-250/110																						
XST40-250/150																						
XST50-200/92	50	65	100	220	310	255	65	20	-	160	260	210	314	254	14.5	350	445	882	110			
XST50-200/110																						
XST50-250/150				225	323	280	70	22	-	180	304	254	314	254	349	279	14.5	350	445	882	110	
XST50-250/220																						
XST65-160/92				65	80	100	200	312	255	65	20	-	160	260	210	314	254	14.5	350	445	838	120
XST65-160/110																						
XST65-160/150																						
XST65-200/150																						
XST65-200/185																						
XST65-200/220																						
XST65-200K/185	225	323	280				70	22	-	180	304	254	314	254	349	279	14.5	350	445	909	923	125
XST65-200K/220																						
XST65-200K/300																						
XST65-250/220																						
XST65-250/300																						
XST65-250/370																						
XST80-160/110	80	100	125	225	315	255	65	20	-	160	260	210	314	254	14.5	350	425	869	130			
XST80-160/150																						
XST80-160/185																						
XST80-200/220																						
XST80-200/300																						
XST80-250/370																						
XST80-250/450				280	386	335	75	28	-	225	393	311	431	356	18.5	450	560	1104	120			
XST80-250/550																						
XST80-200/220																						
XST80-200/300																						
XST80-250/370																						
XST80-250/450																						