



Application

- Used in pressure sewage system
- Drainage of wastewater from individual residences, apartment buildings, recreational developments, models
- Transferring wastewater of commercial buildings, industrial plants, wastewater sampling, small hospitals
- Schools, federal, state and local parks, wastewater drainage
- To transfer various wastewater and sewage

Pump

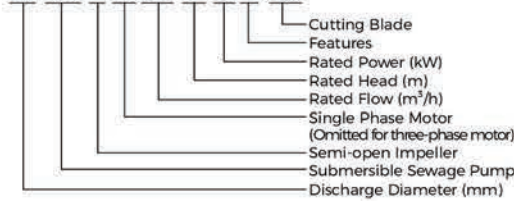
- Semi-open vortex impeller & reliable grinding system
- Flexible installations with hoses, pipes or quick-coupling systems
- Float switch as standard accessory for single phase (≤1.1 kw)
- Cable Length: 10m
- Double-end mechanical seal
- Stainless steel welded shaft
- Liquid temperature: 0 - 40 °C
- Liquid PH value: 4 - 10
- Max. immersion depth: 10 m

Motor

- Frequency/Pole number: 50 Hz/2
- Insulation class: F
- Enclosures class: IP68
- Bearing: Ball type

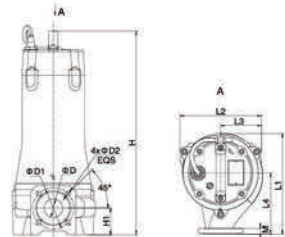
Identification Codes

32 SW P m 3.6-17-1.1 L /QG



Technical Data

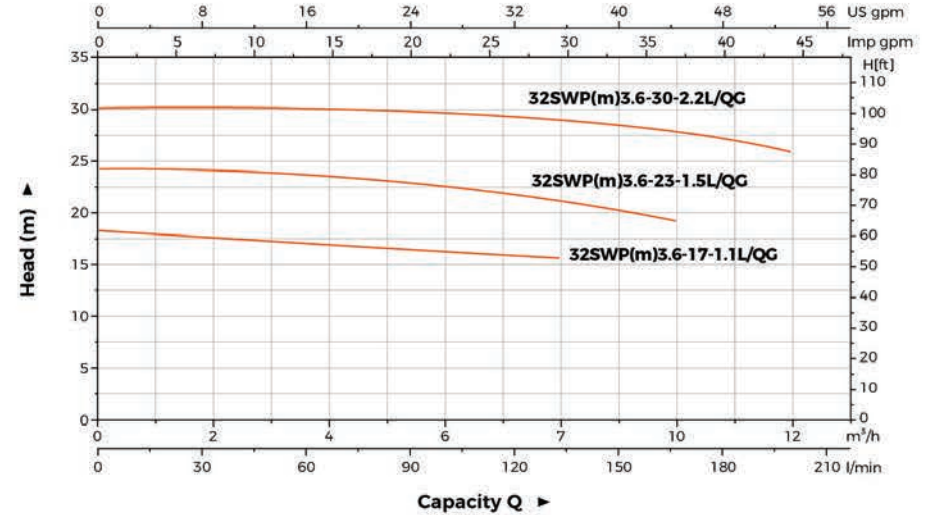
Model		Discharge	Power		Rated flow	Max. flow	Rated head	Max. head
Single Phase	Three Phase	mm (inch)	kW	HP	m³/h	m³/h	m	m
32SWPm3.6-17-1.1L/QG	32SWP3.6-17-1.1L/QG	32(1¼")	1.1	1.5	3.6	8	17	18
32SWPm3.6-23-1.5L/QG	32SWP3.6-23-1.5L/QG	32(1¼")	1.5	2	3.6	10	23	23.2
32SWPm3.6-30-2.2L/QG	32SWP3.6-30-2.2L/QG	32(1¼")	2.2	3	3.6	12	30	30.2



Dimension

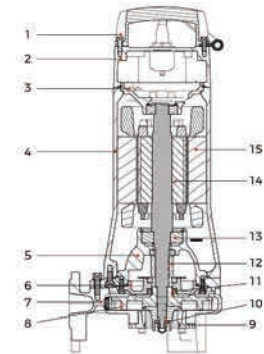
Model	L1 (mm)	L2 (mm)	L3 (mm)	L4 (mm)	H (mm)		H1 (mm)	D (mm)	D1 (mm)	D2 (mm)	M (mm)
					1-	3-					
32SWP(m)3.6-17-1.1L/QG					473	473					
32SWP(m)3.6-23-1.5L/QG	230	191	96	140	564	523	73	32	90	14	16
32SWP(m)3.6-30-2.2L/QG					564	523					

Hydraulic Performance Curves



Material Table

No.	Part	Material
1	Handle	ZC45
2	Upper cover	HT200
3	Upper bearing seat	HT200
4	Motor body	HT200
5	Oil chamber	HT200
6	Pump cover	HT200
7	Pump body	HT200
8	Impeller	HT200
9	Cutting ring	108Cr17
10	Radial cutter	108Cr17
11	Oil seal	
12	Mechanical seal	Upper:SiC/Carbon Lower:SiC/SiC
13	Bearing	
14	Rotor	
15	Stator	



Package Information

Model	GW (kg)		L (mm)	W (mm)	H (mm)	Quantity (PCS/20' TEU)
	1-	3-				
32SWP(m)3.6-17-1.1L/QG	34	32.1	749	289	368	354
32SWP(m)3.6-23-1.5L/QG	41.5	38.4	924	284	363	294
32SWP(m)3.6-30-2.2L/QG	41.1	41.6	924	284	363	294



Application

- Used in pressure sewage system
- Drainage of wastewater from individual residences, apartment buildings, recreational developments, models
- Transferring wastewater of commercial buildings, industrial plants, wastewater sampling, small hospitals
- Schools, federal, state and local parks, wastewater drainage
- To transfer various wastewater and sewage

Pump

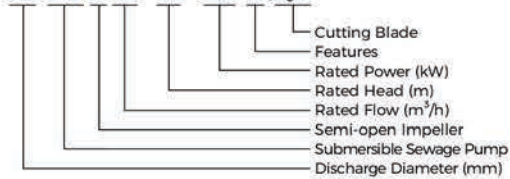
- Semi-open vortex impeller & reliable grinding system
- Flexible installations with hoses, pipes or quick-coupling systems
- Cable Length: 10m
- Double-end mechanical seal
- Stainless steel welded shaft
- Liquid temperature: 0 - 40 °C
- Liquid PH value: 4 - 10
- Max. immersion depth: 10 m

Motor

- Frequency/Pole number: 50 Hz/2
- Insulation class: F
- Enclosures class: IP68
- Bearing: Ball type

Identification Codes

50 SW P 12 - 19 - 2.2 L /QC



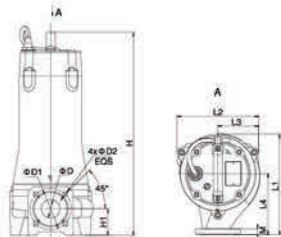
(Flange elbow as standard.
Hose coupling is optional.)

Technical Data

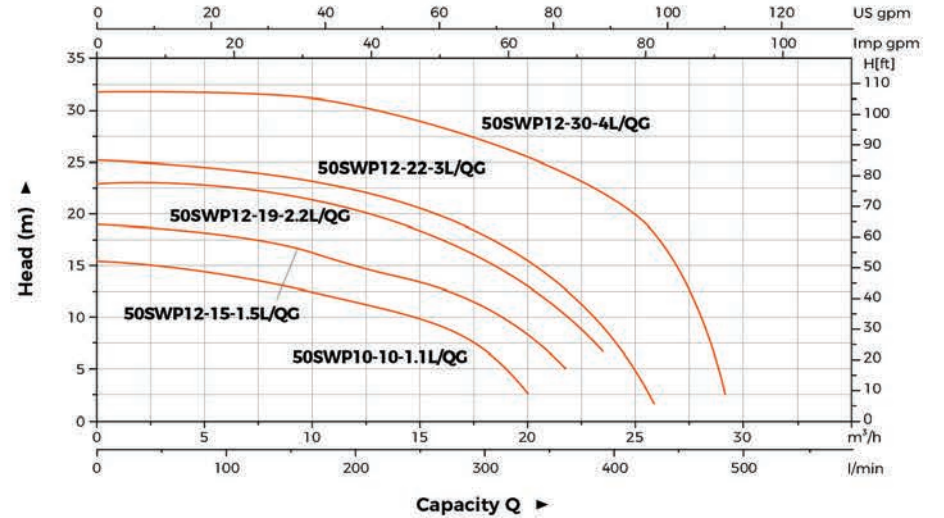
Model	Discharge		Power		Rated flow		Max. flow		Rated head		Max. head	
	mm (inch)	mm (inch)	kW	HP	m³/h	m³/h	m	m	m	m	m	m
50SWP10-10-1.1L/QG	50 (2")		1.1	1.5	10	20.5	10	17.5				
50SWP12-15-1.5L/QG	50 (2")		1.5	2	12	21.5	15	19.5				
50SWP12-19-2.2L/QG	50 (2")		2.2	3	12	24.5	19	23				
50SWP12-22-3L/QG	50 (2")		3	4	12	26	22	25.5				
50SWP12-30-4L/QG	50 (2")		4	5.5	12	26.5	30	33				

Dimension

Model	L1 (mm)	L2 (mm)	L3 (mm)	L4 (mm)	H (mm)	H1 (mm)	D (mm)	D1 (mm)	D2 (mm)	M (mm)
50SWP10-10-1.1L/QG	245.5				472.5					
50SWP12-15-1.5L/QG					523	73	40	100	14	16
50SWP12-19-2.2L/QG		217	109	145						
50SWP12-22-3L/QG	246				554					
50SWP12-30-4L/QG										

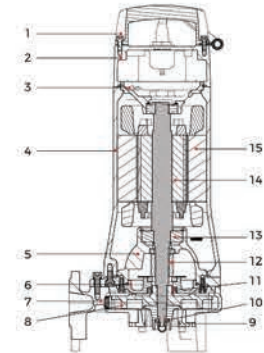


Hydraulic Performance Curves



Material Table

No.	Part	Material
1	Handle	ZC45
2	Upper cover	HT200
3	Upper bearing seat	HT200
4	Motor body	HT200
5	Oil chamber	HT200
6	Pump cover	HT200
7	Pump body	HT200
8	Impeller	HT200
9	Cutting ring	108Cr17
10	Radial cutter	108Cr17
11	Oil seal	
12	Mechanical seal	Upper:SiC/Carbon Lower:SiC/SiC
13	Bearing	
14	Rotor	
15	Stator	



Package Information

Model	GW (kg)	L (mm)	W (mm)	H (mm)	Quantity (PCS/20'TEU)
50SWP10-10-1.1L/QG	39.7	749	289	368	354
50SWP12-15-1.5L/QG	46.8	924	284	363	294
50SWP12-19-2.2L/QG	45.2	924	284	363	294
50SWP12-22-3L/QG	51.5	874	284	363	316
50SWP12-30-4L/QG	53.9	874	284	363	316