



Application

- To transfer clean water with liquid temperature between 0°C and 40°C
- Applicable in water supply and drainage for factories, mines, municipal facilities as well as field irrigation, etc.

Features

- New unique design with ergonomic feature
- Portable and compact pump frame
- High quality engine with excellent performance and long service life
- Impeller designed with high efficient hydraulic system
- Low fuel consumption

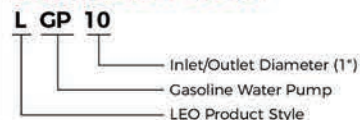
Pump

- Anti-rust cast iron impeller and diffuser
- Max. Suction: 8 m . Suck 5 m needs 120 s
- Inlet/outlet: 25 mm / 38 mm

Engine

- Single cylinder, 2-stroke, Air-cooled
- Max. power: 1.6 HP
- Rated speed: 7500rpm
- Mixture ratio of fuel: 1:25 (2-stroke engine oil and 90 octane gasoline or higher)

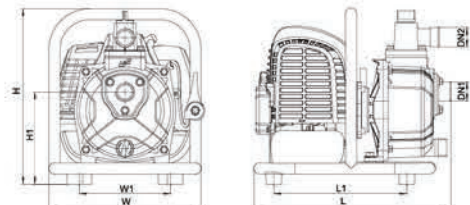
Identification Codes



Technical Data

Model	Power HP	Mixed Fuel Tank L	Displacement cc	Engine	Q(m ³ /h)									
					0	2	4	6	8	10	12	14	15	
LGP10	1.6	1	42.7	G43	0	33.3	66.7	100	133.3	166.7	200	233.3	250	
LGP15	1.6	1	42.7	G43	0	33.3	66.7	100	133.3	166.7	200	233.3	250	

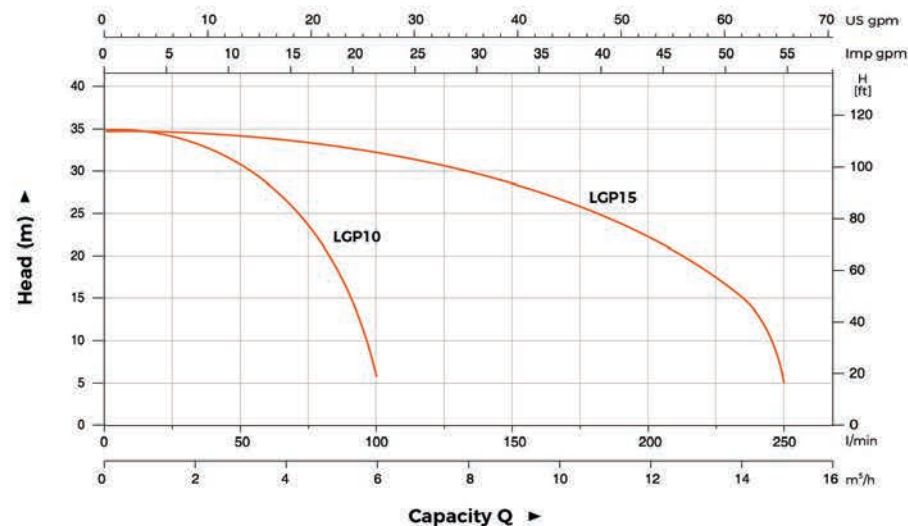
Model	H (m)	Q(l/min)									
		0	33.3	66.7	100	133.3	166.7	200	233.3	250	
LGP10	35	32.5	26.9	6	-	-	-	-	-		
LGP15	35	34.5	34	33	30	27.5	23.5	15	5		



Dimension

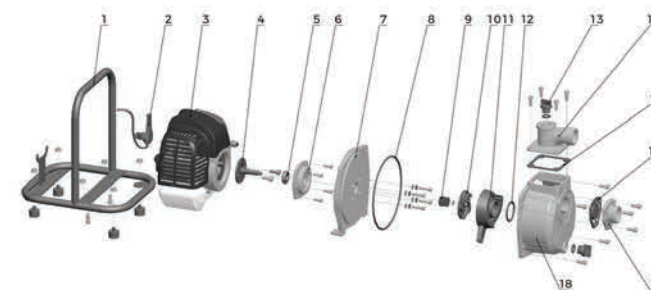
Model	DN1	DN2	L (mm)	W (mm)	H (mm)	L1 (mm)	W1 (mm)	H1 (mm)
LGP10	1"	1"	336	279	300	217.5	155	157
LGP15	1 1/2"	1 1/2"	344	279	345	233	175	180

Hydraulic Performance Curves



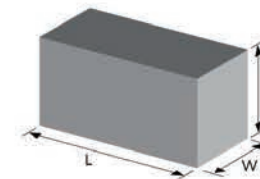
Material Table

No.	Part	Material
1	Frame	Steel
2	Throttle trigger	
3	Engine	
4	Crankshaft	
5	Bearing	
6	Seat connection	Aluminum
7	Pump cover	Aluminum
8	O-ring	NBR
9	Mechanical seal	Carbon/Ceramic
10	Impeller	HT200
11	Diffuser	HT200
12	O-ring	NBR
13	Plug	PP
14	Outlet	Aluminum
15	Seal	NBR
16	Non-return valve	NBR
17	Inlet	Aluminum
18	Pump body	Aluminum



Package Information

Model	CW (Kgs)	L (mm)	W (mm)	H (mm)	Quantity (PCS/20' TEU)
LGP10	6.84	350	290	325	702
LGP15	8.27	355	290	370	681





Application

- To transfer clean water with liquid temperature between 0°C and 40°C
- Application in water supply and drainage for factories, mines, municipal facilities as well as field irrigation, etc.

Features

- Strengthened pump body ensures more durable and reliable service
- Better sealing effect by using special mechanical seal
- 5-direction outlet for convenient use
- Improved starter handle for easier starting
- 20% increased loading quantity thanks to very compact design
- Less gasoline consumption

Pump

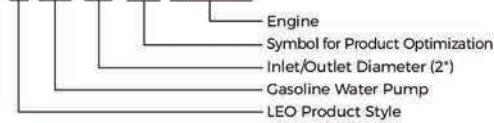
- Anti-rust cast iron impeller and diffuser
- High quality forged steel crankshaft
- Max.Suction: 8 m . Suck 5 m needs 120 s
- Inlet/outlet: 50 mm / 80 mm

Engine

- Single cylinder, 4-stroke, Air-cooled
- Max. power: 6.5 HP
- Rated speed: 3600 rpm
- Reliable engine equipped with low engine oil shut off system

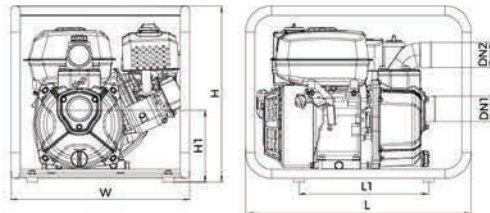
Identification Codes

L GP 20 - A-1 (XR950)



Technical Data

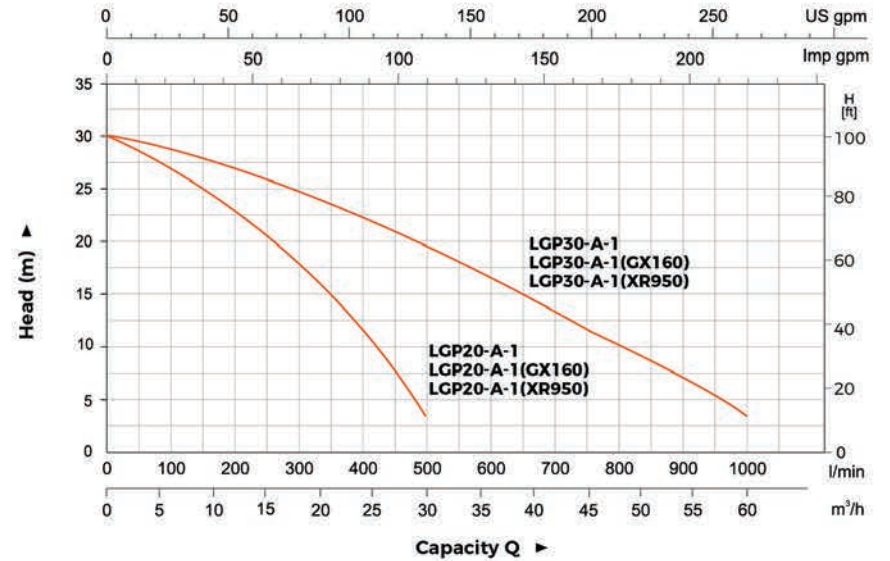
Model	Power HP	Fuel Tank L	Engine Oil L	Displacement cc	Engine	Q(m ³ /h)																
						0	5	10	15	20	25	30	35	40	45	50	55	60				
LGP20-A-1	6.5	3.1	0.55	196	G200	30	28	24.5	21	16	10.5	3.5	-	-	-	-	-	-	-	-	-	-
LGP20-A-1(CX160)	5	2.8	0.58	163	CX160	30	28	24.5	21	16	10.5	3.5	-	-	-	-	-	-	-	-	-	-
LGP20-A-1(XR950)	6.5	3.1	0.6	208	XR950	30	28	24.5	21	16	10.5	3.5	-	-	-	-	-	-	-	-	-	-
LGP30-A-1	6.5	3.1	0.55	196	G200	30	29	27.5	26	24	21.7	19.5	16.9	14.4	11.6	9.2	6.4	3.5	-	-	-	-
LGP30-A-1(CX160)	5	2.8	0.58	163	CX160	30	29	27.5	26	24	21.7	19.5	16.9	14.4	11.6	9.2	6.4	3.5	-	-	-	-
LGP30-A-1(XR950)	6.5	3.1	0.6	208	XR950	30	29	27.5	26	24	21.7	19.5	16.9	14.4	11.6	9.2	6.4	3.5	-	-	-	-



Dimension

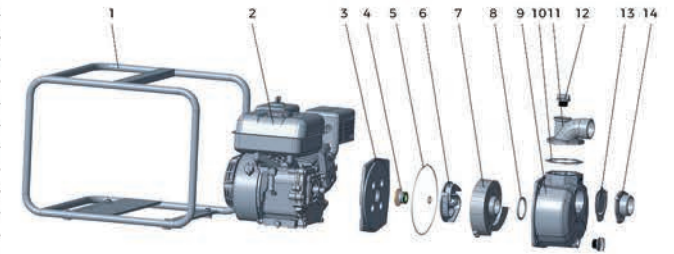
Model	DN1	DN2	L (mm)	W (mm)	H (mm)	H1 (mm)
LGP20-A-1	2"	2"	530	420	425	181
LGP20-A-1(CX160)	2"	2"	530	420	425	181
LGP20-A-1(XR950)	2"	2"	530	420	425	190.5
LGP30-A-1	3"	3"	530	420	425	190
LGP30-A-1(CX160)	3"	3"	530	420	425	183
LGP30-A-1(XR950)	3"	3"	530	420	425	190

Hydraulic Performance Curves



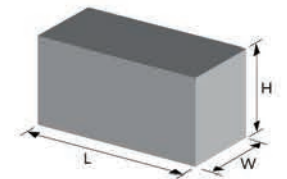
Material Table

No.	Part	Material
1	Frame	Steel
2	Gasoline engine	
3	Pump cover	ADC12
4	Mechanical seal	Carbon/Ceramic
5	O-ring	NBR
6	Impeller	Cast iron
7	Diffuser	Cast iron
8	O-ring	NBR
9	Pump body	Aluminum
10	Gasket	NBR
11	Outlet	Aluminum
12	Filling plug	PA6
13	Non-return valve	NBR
14	Inlet	Aluminum



Package Information

Model	GW (Kgs)	L (mm)	W (mm)	H (mm)	Quantity (PCS/20'TEU)
LGP20-A-1	24	545	435	435	245
LGP20-A-1(CX160)	24	545	435	435	245
LGP20-A-1(XR950)	25	545	435	435	245
LGP30-A-1	25.2	545	435	435	245
LGP30-A-1(CX160)	25.2	545	435	435	245
LGP30-A-1(XR950)	27.2	545	435	435	245





Application

- To transfer clean water with liquid temperature between 0°C and 40°C
- Application in water supply and drainage for factories, mines, municipal facilities as well as field irrigation, etc.
- Suitable for longer distance and greater height water transfer

Features

- New unique design with ergonomic feature
- Portable and compact pump frame
- High quality motor with excellent performance and long service life
- Impeller designed with high efficient hydraulic system
- Low fuel consumption
- LEO engine as default, BS/Honda engine is optional

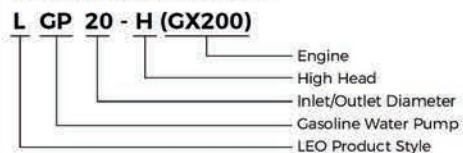
Pump

- Anti-rust cast iron diffuser
- Max.Suction: 8 m , Suck 5 m needs 120 s
- Inlet/outlet: 50 mm/2 x 38 mm+1 x 50 mm
38 mm/1 x 38 mm+2 x 25 mm

Engine

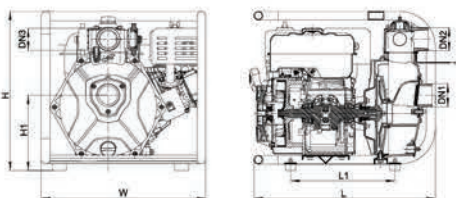
- Single cylinder, 4-stroke, Air-cooled
- Max.power: 6.5 HP
- Rated speed: 3600 rpm
- Reliable engine equipped with low engine oil shut off system

Identification Codes



Technical Data

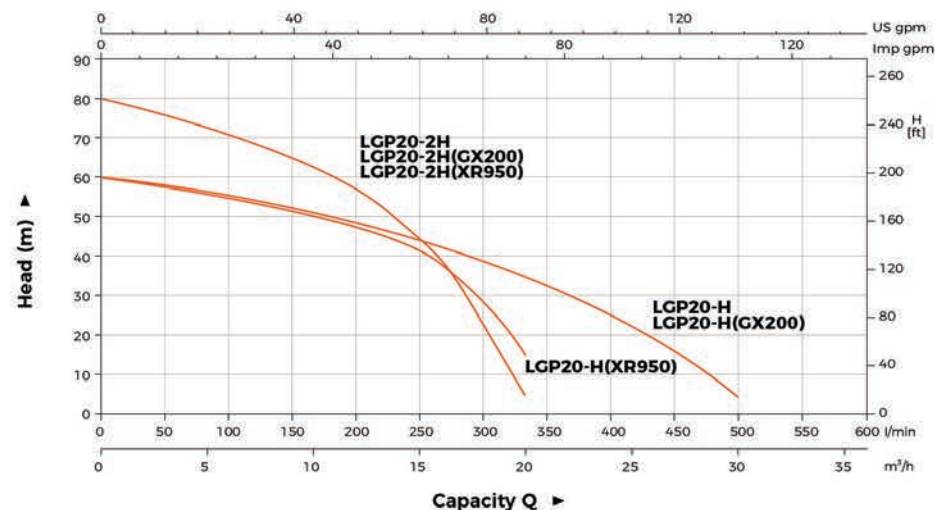
Model	Power	Fuel Tank	Engine Oil	Displacement	Engine	Q(m³/h)							
	HP	L	L			cc	0	5	10	15	20	25	30
LGP20-H	6.5	3.1	0.55	196	G200	H (m)	60	83.3	166.7	250	333.3	416.7	500
LGP20-H(GX200)	6.5	2.8	0.58	196	GX200		60	56.5	51.5	44.5	35	20	5
LGP20-2H	6.5	3.1	0.55	196	G200		80	72.5	62.5	45	5	-	-
LGP20-2H(GX200)	6.5	2.8	0.58	196	GX200		80	72.5	62.5	45	5	-	-
LGP20-H(XR950)	6.5	3.1	0.6	208	XR950		60	55.2	50	41	15	-	-
LGP20-2H(XR950)	6.5	3.1	0.6	208	XR950		80	72.5	62.5	45	5	-	-



Dimension

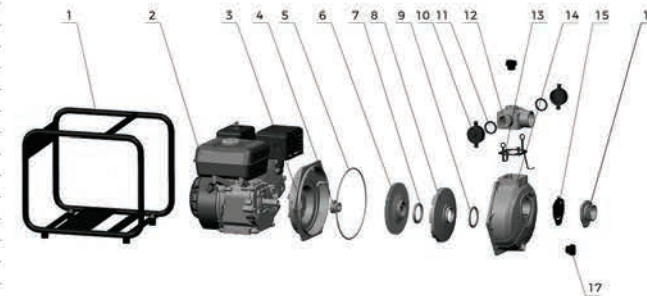
Model	DN1	DN2	2xDN3	L (mm)	W (mm)	H (mm)	H1 (mm)
LGP20-H	2"	2"	1.5"	463	398	406	200
LGP20-H(GX200)	2"	2"	1.5"	530	420	425	192.2
LGP20-2H	2"	2"	1.5"	463	398	406	200
LGP20-2H(GX200)	2"	2"	1.5"	530	420	425	192.2
LGP20-H(XR950)	2"	2"	1.5"	530	420	425	190
LGP20-2H(XR950)	2"	2"	1.5"	530	420	425	190

Hydraulic Performance Curves



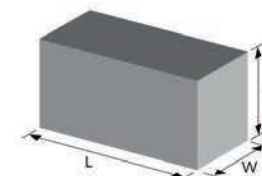
Material Table

No.	Part	Material
1	Frame	Steel
2	Engine	
3	Bracket	Aluminum
4	Mechanical seal	Carbon/Ceramic
5	O-ring	NBR
6	Impeller	Aluminum
7	Seal ring	NBR
8	Diffuser	HT200
9	Seal ring	NBR
10	Pipe blanking cap	PP
11	Seal ring	NBR
12	Outlet	Aluminum
13	Gasket	NBR
14	Pump body	Aluminum
15	Non-return valve	NBR
16	Inlet	Aluminum
17	Filling plug	PA6



Package Information

Model	GW (Kgs)	L (mm)	W (mm)	H (mm)	Quantity (PCS/20' TEU)
LGP20-H	23.22	470	412	432	305
LGP20-H(GX200)	25.5	545	435	465	196
LGP20-2H	23.24	470	412	432	305
LGP20-2H(GX200)	27	545	435	465	196
LGP20-H(XR950)	27.2	545	435	465	196
LGP20-2H(XR950)	28.2	545	435	465	196





Application

- To transfer clean water with liquid temperature between 0°C and 40°C
- Application in water supply and drainage for factories, mines, municipal facilities as well as field irrigation, etc.

Features

- Strengthened cast-iron pump body ensures more durable and reliable service
- Impeller designed with high efficient hydraulic system
- High quality engine with excellent performance and long service life
- Better sealing effect by using special mechanical seal
- Low fuel consumption

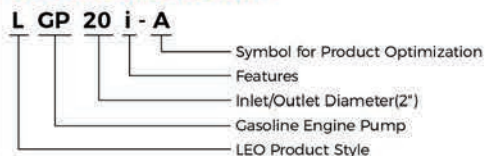
Pump

- Anti-rust cast iron pump body
- Aluminum alloy impeller
- Max.Suction: 8 m , Suck 5 m needs 120 s
- Inlet/outlet: 50 mm

Engine

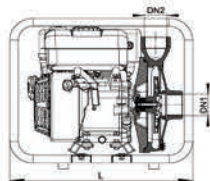
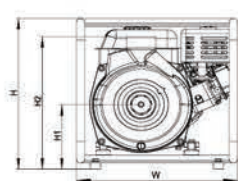
- Single cylinder, 4-stroke, Air-cooled
- Max.power: 6.5 HP
- Rated speed: 3600 rpm
- Reliable engine equipped with low engine oil shut off system

Identification Codes



Technical Data

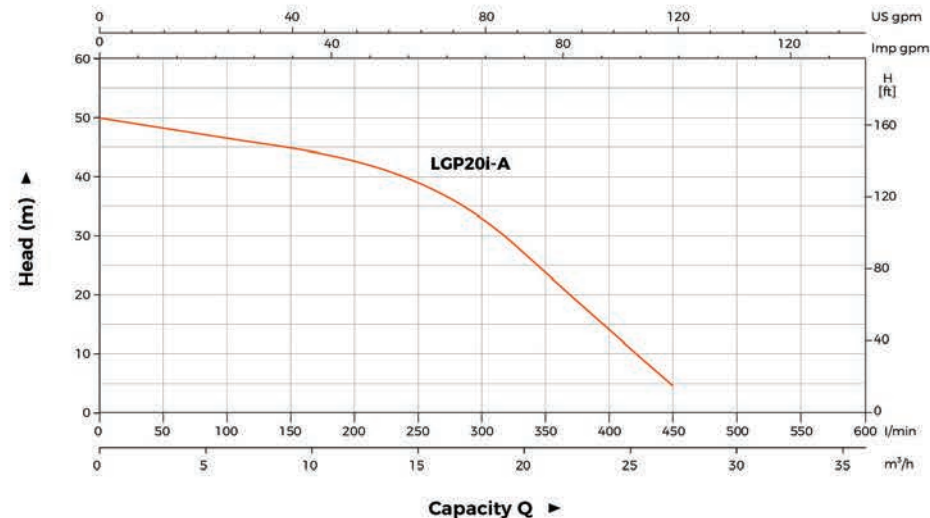
Model	Power	Fuel Tank	Engine Oil	Displacement	Engine	Q(m³/h)							
	HP	L	L	cc		0	5	10	15	20	25	28	
LGP20i-A	6.5	3.1	0.55	196	G200	H(m)	50	48	46	40	28	11.5	5
						Q(l/min)	0	83.3	166.7	250	333.3	416.7	466.7



Dimension

Model	DN1	DN2	L (mm)	W (mm)	H (mm)	H1 (mm)	H2 (mm)
LGP20i-A	2"	2"	476	420	440	180	370

Hydraulic Performance Curves



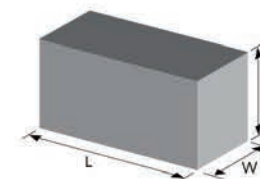
Material Table

No.	Part	Material
1	Frame	Steel
2	Engine	
3	Pump cover	HT200
4	O-ring	NBR
5	Mechanical seal	Carbon/Ceramic
6	Impeller	Aluminum
7	Pump body	HT200
8	Plug	HPb59-1
9	O-ring	NBR
10	Plug	HPb59-1



Package Information

Model	CW (Kgs)	L (mm)	W (mm)	H (mm)	Quantity (PCS/20' TEU)
LGP20i-A	30	470	433	450	325





Application

- Can be used to transfer slurry, liquids that containing mud, sand, small rocks and other debris diameter less than 22mm.
- Sewage treatment for civil engineering, mines, quarries and municipal facilities, etc.
- Water supply and drainage for factories, mines, municipal facilities as well as field irrigation, etc.

Features

- All new design with ergonomic feature
- Reliable 4-stroke gasoline engine with low fuel consumption and high quality crankshaft
- Portable, durable and compact pump frame
- Durable sealing system with special mechanical seal
- Silicon carbide mechanical seal for increased abrasive resistance, longer life and less maintenance
- Pump body can easily disassembled and assembled for cleaning out debris, or pump repair

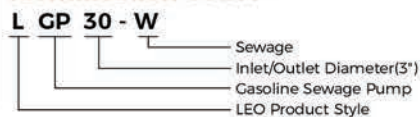
Pump

- Anti-rust cast iron impeller and diffuser
- Max.Suction: 8 m. Suck 5 m needs 120 s.
- Inlet/outlet: 3"
- Max. diameter of particle: 22 mm
- Liquid temperature range: 0°C - 40°C

Engine

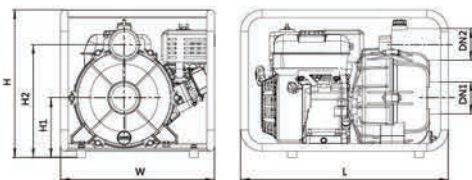
- Single cylinder, 4-stroke, Air-cooled
- Max.power: 6.5 HP
- Rated speed: 3600 rpm
- Reliable engine equipped with low engine oil shut off system

Identification Codes



Technical Data

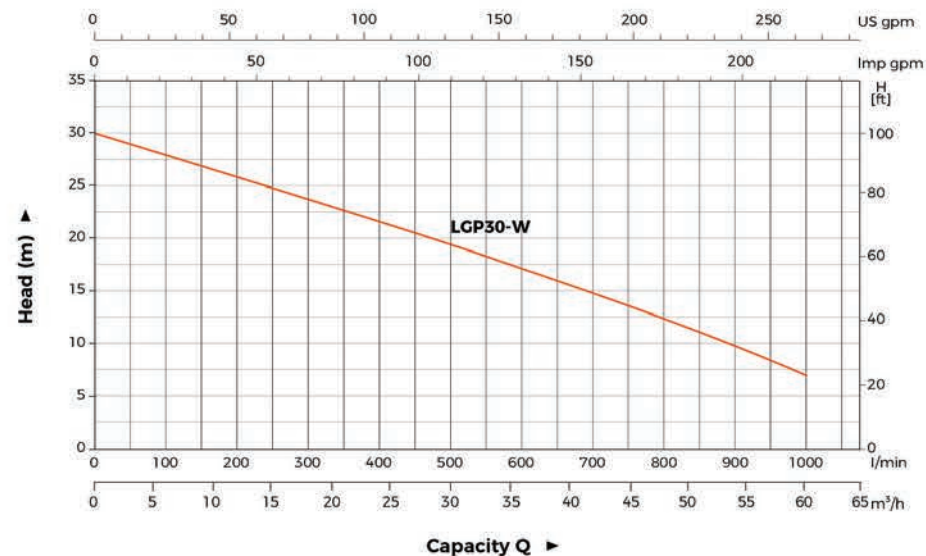
Model	Power HP	Fuel Tank L	Engine Oil L	Displacement cc	Engine	Q(m ³ /h)													
						0	5	10	15	20	25	30	35	40	45	50	55	60	
LGP30-W	6.5	3.1	0.55	196	G200	H(m)	30	27	25.5	24	22	20.5	18.5	17	15.5	14.5	11.5	9.2	7



Dimension

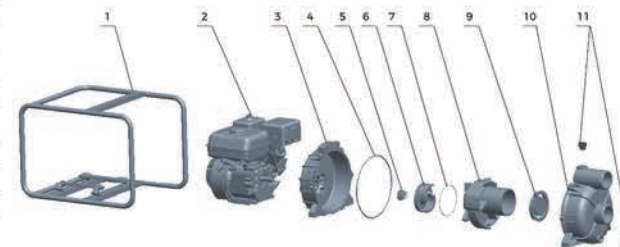
Model	DN1	DN2	L (mm)	W (mm)	H (mm)	H1 (mm)	H2 (mm)
LGP30-W	3"	3"	590	437	431	195	347

Hydraulic Performance Curves



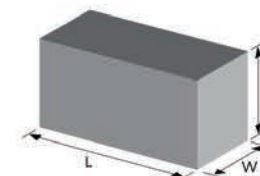
Material Table

No.	Part	Material
1	Frame	Steel
2	Engine	
3	Pump cover	Aluminum
4	O-ring	NBR
5	Mechanical seal	Silicon carbide / Silicon carbide
6	Impeller	HT200
7	O-ring	NBR
8	Diffuser	HT200
9	Non-return valve	NBR
10	Pump body	Aluminum
11	Plug	ABS



Package Information

Model	GW (Kgs)	L (mm)	W (mm)	H (mm)	Quantity (PCS/20' TEU)
LGP30-W	34.6	605	450	459	168





Application

- To transfer clean water or trash water with liquid temperature between 0°C and 40°C
- Application in water supply and drainage for factories, mines, municipal facilities as well as field irrigation, etc.

Features

- Strengthened aluminium alloy pump body ensures more durable and reliable service
- Original design of the pump body for easy cleanout
- Impeller designed with high efficient hydraulic system
- Honda engine with excellent performance and long service life
- Better sealing effect by using special mechanical seal
- Low fuel consumption
- Honda Engine

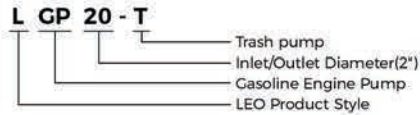
Pump

- Aluminum alloy pump body
- Anti-rust cast iron impeller
- Max. suction: 8 m
- Rated suction: 5 m / 120 s
- Inlet/outlet: 50 mm / 50 mm , 80 mm / 80 mm
- Max.diameter of particle: 22 mm
- Liquid temperature range: 0°C - 40°C

Engine

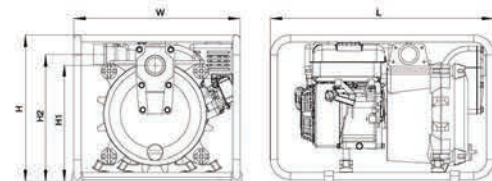
- Single cylinder,4-stroke, Air-cooled
- Max.power: 9 HP
- Displacement: 163 cc , 270 cc
- Rated speed: 3600 rpm

Identification Codes



Technical Data

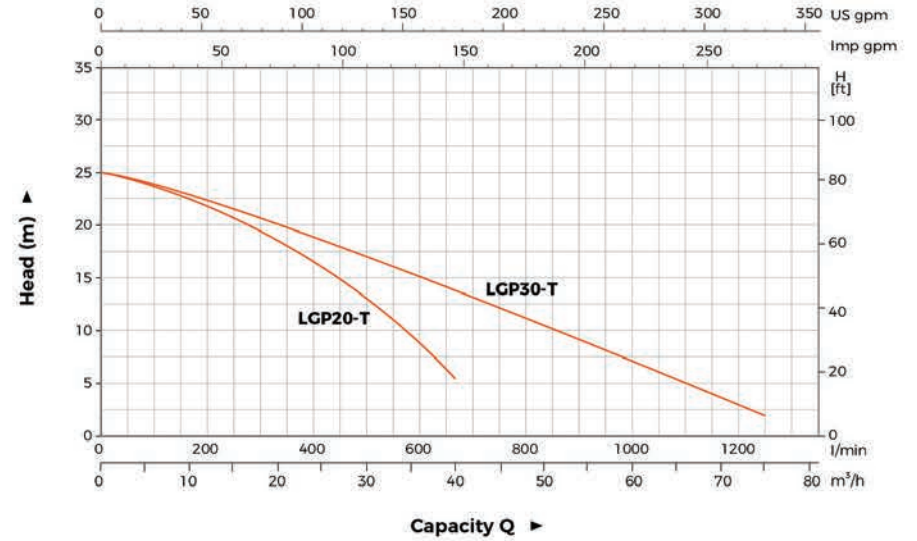
Model	Power HP	Fuel Tank L	Engine Oil L	Displacement cc	Engine	Q(m³/h)															
						0	5	10	15	20	25	30	35	40	45	55	65	75			
LGP20-T	5	2.8	0.55	163	CX160	H	25	24.1	22.5	20.6	18.6	16.1	13.5	10	6	-	-	-	-		
LGP30-T	9	3.2	1.1	270	CX270	H	25	24	23	21	19	18	16	15	14	12	9	6	2		



Dimension

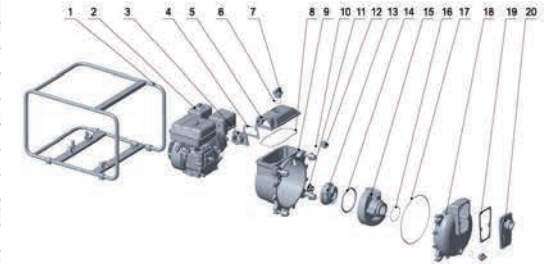
Model	DN1	DN2	L (mm)	W (mm)	H (mm)	H1 (mm)	H2 (mm)
LGP20-T	2"	2"	675	502	446	350	385
LGP30-T	3"	3"	715	502	532.5	380	415

Hydraulic Performance Curves



Material Table

No.	Part	Material	No.	Part	Material
1	Frame	Steel	11	Mechanical seal	
2	Engine		12	Plug	
3	Outlet	Aluminum	13	Impeller	HT200
4	Seal	NBR	14	O-ring	NBR
5	Outlet cover	Aluminum	15	Diffuser	HT200
6	O-ring	NBR	16	O-ring	NBR
7	Plug		17	O-ring	NBR
8	O-ring	NBR	18	Pump body	Aluminum
9	Pump cover	Aluminum	19	Seal	
10	O-ring	NBR	20	Inlet	Aluminum



Package Information

Model	GW (Kgs)	L (mm)	W (mm)	H (mm)	Quantity (PCS/20 TEU)
LGP20-T	48.8	675	502	446	175
LGP30-T	63	745	542	582	128

