



Application

- It is used for water circulation in all kinds of small domestic swimming pools. Slightly dirty water with solids in suspension can be perfectly filtered.

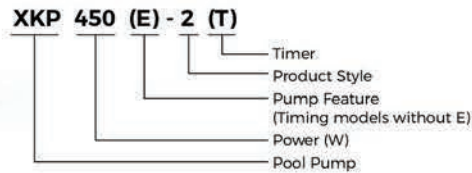
Pump

- Engineering plastic pump body
- Medium temperature: 5 - 50°C
- Environmental temperature: ≤40°C

Motor

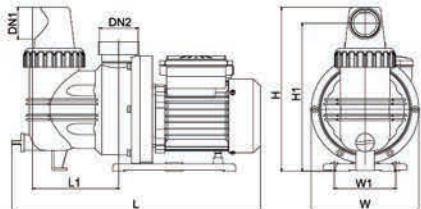
- Motor with copper or aluminum winding
- Built-in thermal protector for single phase motor
- Insulation class: F
- Enclosures class: IPX5

Identification Codes



Technical Data

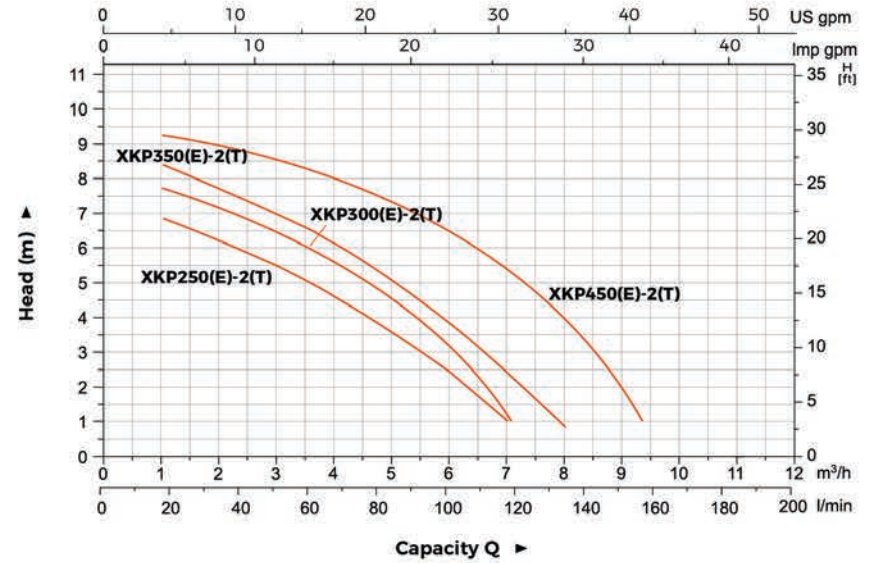
Model	Power W	Q(m³/h) Q(l/min)	1	2	3	4	5	6	7	8	9
			H (m)	17	33	50	66	83	100	116	132
XKP250(E)-2(T)	250	H (m)	7.5	6.3	5.5	4.6	3.6	2.4	1.0	-	-
XKP300(E)-2(T)	300		8.5	7.2	6.4	5.5	4.5	3.0	1.0	-	-
XKP350(E)-2(T)	350		9	7.7	7.0	6.2	5.0	3.8	2.3	0.8	-
XKP450(E)-2(T)	450		10	9.1	8.5	8.0	7.3	6.4	5.2	4.0	2.4



Dimension

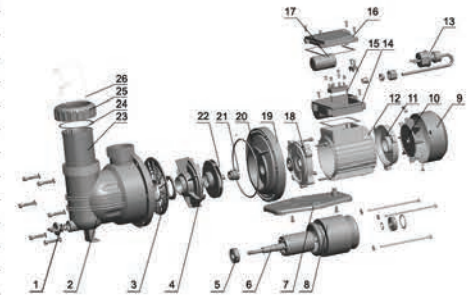
Model	DN1	DN2	L (mm)	W (mm)	H (mm)	L1 (mm)	W1 (mm)	H1 (mm)
XKP250(E)-2(T)	40	40	412	175	265	140	100	239
XKP300(E)-2(T)			412	175	265	140	100	239
XKP350(E)-2(T)			412	175	265	140	100	239
XKP450(E)-2(T)			412	175	265	140	100	239

Hydraulic Performance Curves



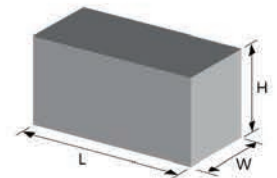
Material Table

No.	Part	Material	No.	Part	Material
1	Filling plug	PP	14	Terminal box	ABS
2	Pump body	PP	15	Terminal board	PC
3	Water proof cover	PPO	16	Terminal box cover	ABS
4	Diffuser		17	Capacitor	
5	Ball bearing		18	Front plate	ZL102
6	Rotor		19	Support	PP
7	Base	PA	20	O-ring	NBR
8	Stator		21	Mechanical seal	Graphite/Ceramics
9	Fan cover	08F	22	Impeller	PPO
10	Fan	PP	23	Sieve	PP
11	Rear cover	ZL102	24	O-ring	NBR
12	Motor housing	ZL102	25	Nut	ABS
13	Cable		26	Connector	PC



Package Information

Model	GW (Kgs)	L (mm)	W (mm)	H (mm)	Quantity (PCS/20' TEU)
XKP250(E)-2(T)	5.7	450	203	238	1341
XKP300(E)-2(T)	6.1	450	203	238	1260
XKP350(E)-2(T)	6.3	450	203	238	1341
XKP450(E)-2(T)	6.5	450	203	238	1341





Application

- It is used for water circulation in all kinds of small domestic swimming pools. Slightly dirty water with solids in suspension can be perfectly filtered.

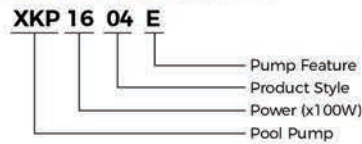
Pump

- Engineering plastic pump body
- Medium temperature: 5 - 50°C
- Environmental temperature: ≤40°C
- Max. suction: 3.5 m

Motor

- Motor with copper or aluminum winding
- Built-in thermal protector for single phase motor
- Insulation class: F
- Enclosures class: IPX5

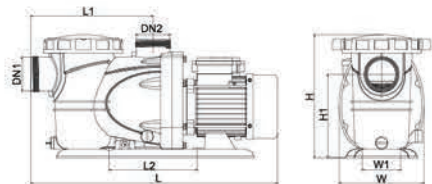
Identification Codes



Technical Data

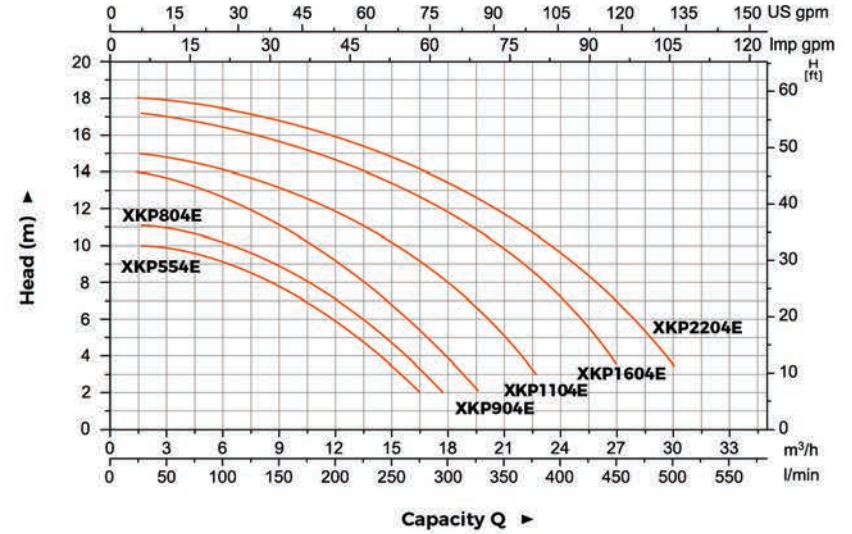
Model	Power W	Q(m³/h) Q(l/min)	Head (m)													
			3	6	9	12	15	18	21	24	27	30				
XKP554E	600		10	9	8	6	3.2	0.5	-	-	-	-	-	-	-	-
XKP804E	800		11	10.3	8.8	7	4.5	1.5	-	-	-	-	-	-	-	-
XKP904E	900		14	12.3	11.1	9.2	6.5	3.4	0.2	-	-	-	-	-	-	-
XKP1104E	1100		15	14.2	13.2	12	10.3	8	4.8	-	-	-	-	-	-	-
XKP1604E	1600		17	16.3	15.5	14.5	13.5	12	9.6	7	3.5	-	-	-	-	-
XKP2204E	2200		18	17.3	16.5	16	14.8	13.4	11.7	9.5	6.5	3.3	-	-	-	-

Dimension



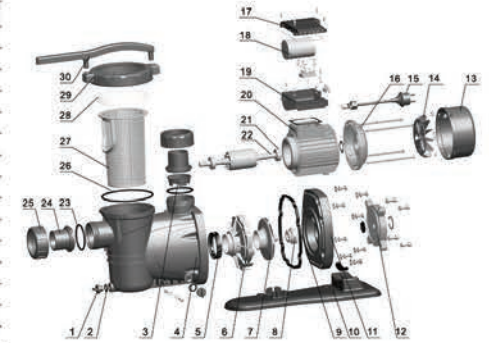
Model	DN1	DN2	L (mm)	W (mm)	H (mm)	L1 (mm)	L2 (mm)	H1 (mm)
XKP554E	48.5\50	48.5\50	554	190	276	274	197	187
XKP804E			554	190	276	274	197	187
XKP904E			554	190	276	274	197	187
XKP1104E			554	190	276	274	197	187
XKP1604E			584	190	276	274	197	187
XKP2204E			584	190	276	274	197	187

Hydraulic Performance Curves



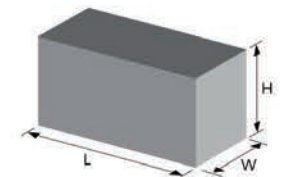
Material Table

No.	Part	Material	No.	Part	Material
1	Drain plug	PP	16	Rear cover	ZL102
2	O-ring	NBR	17	Capacitor cover	ABS
3	Valve body	PP	18	Capacitor	
4	Pump body	PP	19	Terminal box	ABS
5	Diffuser seal washer	NBR	20	Stator	
6	Diffuser	PP	21	Bearing	
7	Impeller	PPO	22	Rotor	
8	Mechanical seal	Graphite/Ceramics	23	O-ring	NBR
9	Sealing ring	NBR	24	Connector	PVC
10	Bottom board	PP	25	Nut	ABS
11	Plastic support	PP	26	O-ring	EPDM
12	Pump support	ZL102	27	Sieve	PP
13	Fan cover	PP	28	Pump cover	PC
14	Fan	PP	29	Pump cover nut	PA6
15	Cable		30	Wrench	PP



Package Information

Model	GW (Kgs)	L (mm)	W (mm)	H (mm)	Quantity (PCS/20'TEU)
XKP554E	10.4	605	205	290	816
XKP804E	11.1	605	205	290	816
XKP904E	12.1	605	205	290	816
XKP1104E	12.8	650	205	290	816
XKP1604E	16.1	645	230	290	720
XKP2204E	17.7	645	230	290	720





Application

- It is used for water circulation in all kinds of small domestic swimming pools. Slightly dirty water with solids in suspension can be perfectly filtered.

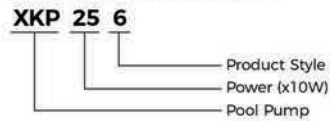
Pump

- Engineering plastic pump body
- Medium temperature: 5 - 50°C
- Environmental temperature: ≤40°C
- Max. suction: 3.5 m

Motor

- Motor with copper or aluminum winding
- Built-in thermal protector for single phase motor
- Insulation class: F
- Enclosures class: IPX5

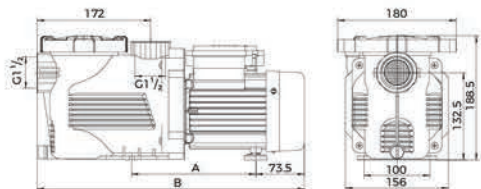
Identification Codes



Technical Data

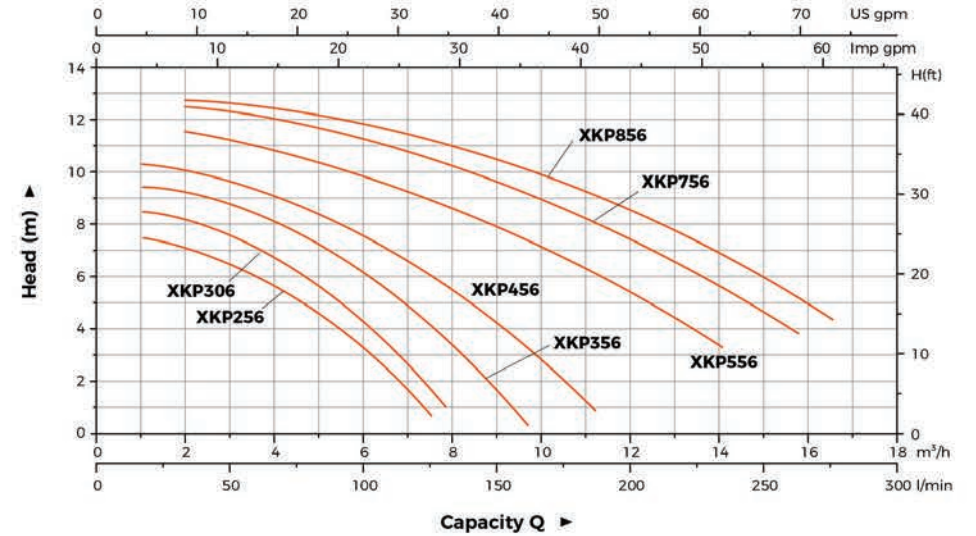
Model	Power W	Q(m³/h) Q(l/min)	H (m)					
			0	3	6	9	12	15
XKP256	250		7.5	6.3	2.9	-	-	-
XKP306	300		8.5	7.3	4.2	-	-	-
XKP356	350		9.5	8.2	6.2	1.5	-	-
XKP456	450		10.3	9.2	7.2	4.1	-	-
XKP556	550		12	11	9.9	8	5.5	-
XKP756	750		12.5	12.3	11.3	9.7	7.5	4.8
XKP856	850		12.5	12.4	11.8	10.5	8.5	6

Dimension



Model	DN1	DN2	A (mm)	B (mm)
XKP256	48.5\50	48.5\50	157.5	374
XKP306			157.5	374
XKP356			157.5	374
XKP456			157.5	374
XKP556			188.5	405
XKP756			188.5	405
XKP856			188.5	405

Hydraulic Performance Curves



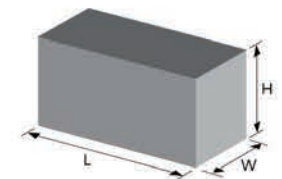
Material Table

No.	Part	Material	No.	Part	Material
1	Pump cover nut		14	Fan cover	
2	Pump cover		15	Ball bearing	
3	Sieve		16	Rotor	
4	O-sealing ring		17	Ball bearing	
5	Support foot		18	Front plate	
6	Motor stator		19	Plastic rack	
7	Terminal box ring		20	Bracket washer	
8	Terminal box		21	Mechanical seal	
9	Capacitor		22	Impeller	
10	Sealing strip		23	Diffuser	
11	Terminal cover		24	Diffuser ring	
12	Power cable		25	Pump body	
13	Fan		26	Drain plug	



Package Information

Model	GW (Kgs)	L (mm)	W (mm)	H (mm)	Quantity (PCS/20'TEU)
XKP256	5.2	410	170	200	2002
XKP306	5.2	410	170	200	2002
XKP356	5.3	410	170	200	2002
XKP456	5.6	410	170	200	2002
XKP556	6.2	410	170	200	1859
XKP756	6.8	410	170	200	1859
XKP856	7.2	410	170	200	1859





Application

- It is used for water circulation in all kinds of small domestic swimming pools. Slightly dirty water with solids in suspension can be perfectly filtered.

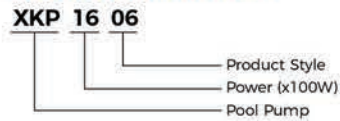
Pump

- Engineering plastic pump body
- Medium temperature: 5 - 50°C
- Environmental temperature: ≤40°C
- Max. suction: 3.5 m

Motor

- Motor with copper or aluminum winding
- Built-in thermal protector for single phase motor.
- Insulation class: F
- Enclosures class: IPX5

Identification Codes

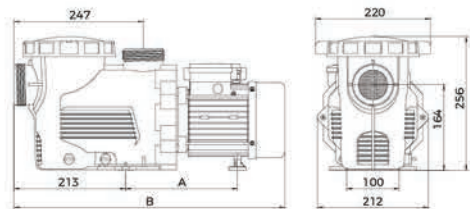


Technical Data

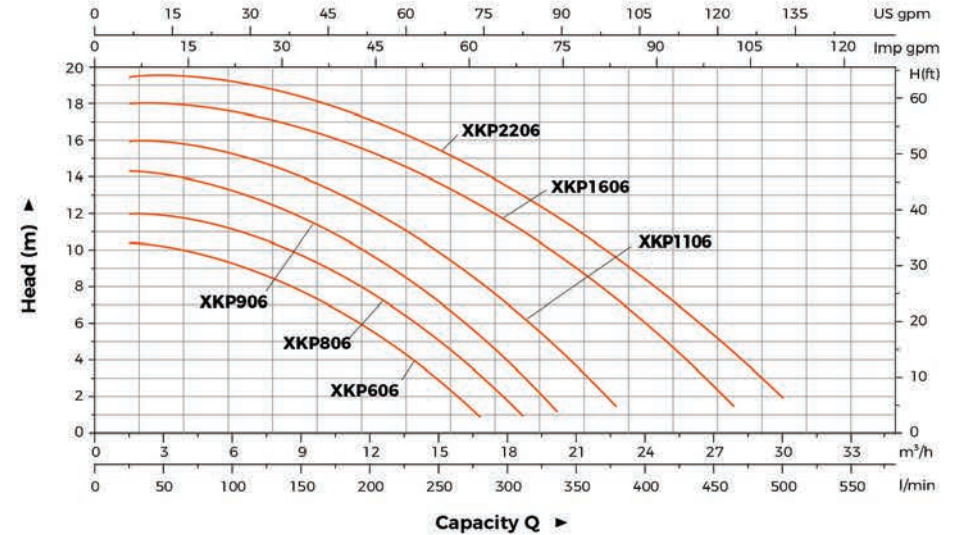
Model	Power W	Q(m ³ /h) Q(l/min)	0	6	12	18	24	30
			H (m)	0	100	200	300	400
XKP606	600		10.5	9.4	5.7	-	-	-
XKP806	800		12	11.3	7.7	1.9	-	-
XKP906	900		14.5	13.3	9.7	3.9	-	-
XKP1106	1100		16	15.3	12.3	7.2	-	-
XKP1606	1600		18	17.7	15.6	11.6	6.2	-
XKP2206	2200		19.5	19	17.2	13.6	8.6	2.2

Dimension

Model	DN1	DN2	A (mm)	B (mm)
XKP606	48.5\50	48.5\50	214	518
XKP806			214	518
XKP906			214	518
XKP1106			214	518
XKP1606			250	548
XKP2206			250	548



Hydraulic Performance Curves



Material Table

No.	Part	Material	No.	Part	Material
1	Pump cover nut		15	End plate	
2	Pump cover		16	Fan	
3	O-sealing ring		17	Fan cover	
4	Sieve		18	Plastic rack	
5	Water outlet connector		19	Pump support	
6	Nut		20	Ball bearing	
7	Support foot		21	Rotor	
8	Motor stator		22	Mechanical seal	
9	Terminal box		23	Switch seal washer	
10	Terminal box ring		24	Impeller	
11	Capacitor		25	Diffuser	
12	Seal washer		26	Switch seal washer	
13	Terminal cover		27	Pump body	
14	Power cable		28	Drain plug	



Package Information

Model	CW (Kgs)	L (mm)	W (mm)	H (mm)	Quantity (PCS/20'TEU)
XKP606	9.6	575	225	255	900
XKP806	10.4	575	225	255	900
XKP906	11.2	575	225	255	900
XKP1106	12.1	575	225	255	900
XKP1606	15.2	605	225	255	837
XKP2206	16.8	605	225	255	837

