

# XHSm

## Self-priming Centrifugal Pump



### Application

- Can be used to transfer clean water or other liquids similar to water in physical and chemical properties
- Suitable for pumping water from lake, river and well
- Industrial use and agricultural irrigation

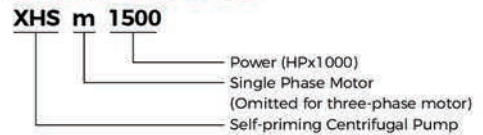
### Pump

- Cast iron pump body and support under special anti-rust treatment
- AISI 304 shaft
- Max. liquid temperature: +60°C
- Max.suction: + 8m

### Motor

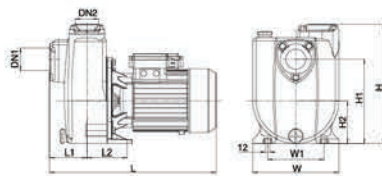
- Low noise&Long life bearing
- Motor with copper winding
- Built-in thermal protector for single phase motor
- Insulation class: F
- Enclosures class: IPX4
- Max. ambient temperature: +50°C
- IE 2 motor (Three phase, power ≥ 0.75kW)

### Identification Codes



### Technical Data

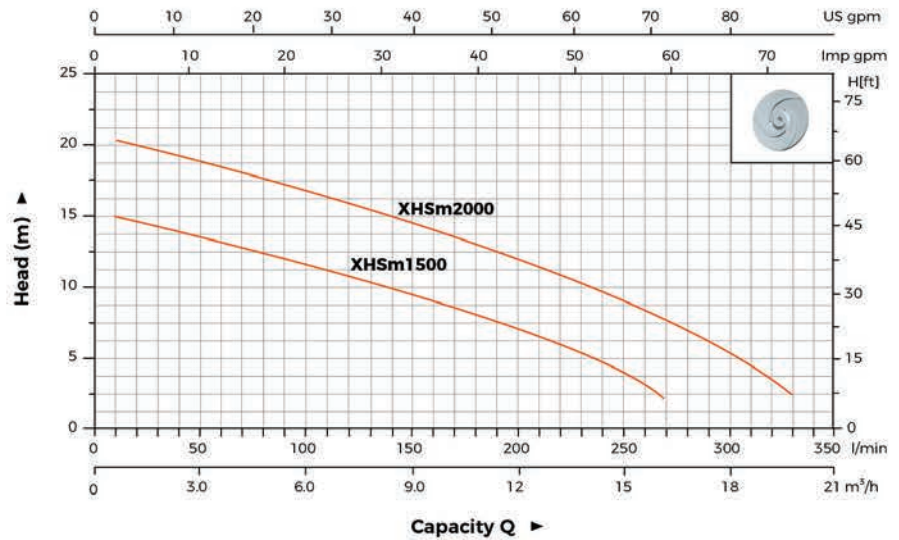
Model		Power		Q(m³/h)												
Single Phase	Three Phase	kW	HP	0	2.1	4.5	6.6	8.1	10.2	12	14.4	16.2	19.8			
				Q(l/min)	0	35	75	110	135	170	200	235	270	330		
XHSm1500	XHS1500	1.1	1.5	H (m)	15	14	12.5	11	10	8.5	7	5	2.5	-		
XHSm2000	XHS2000	1.5	2		20.5	19	17.5	16	15	13.5	12	10	7.5	2.5		



### Dimension

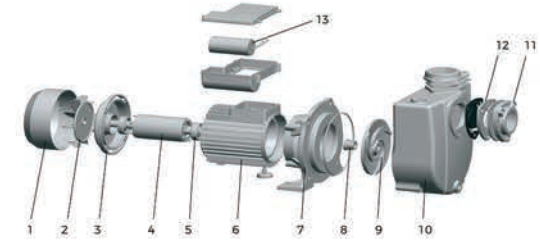
Model	DN1	DN2	L (mm)	W (mm)	H (mm)	L1 (mm)	L2 (mm)	W1 (mm)	H1 (mm)	H2 (mm)
XHS(m)1500	2"	2"	432	222	308	96.5	104	145	218	111
XHS(m)2000										

### Hydraulic Performance Curves



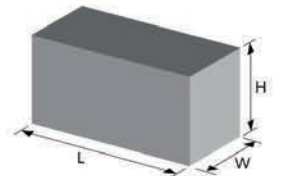
### Material Table

No.	Part	Material
1	Fan cover	O8F
2	Fan	PP
3	Rear cover	ZL 102
4	Rotor	
5	Bearing	
6	Stator	
7	Support	HT200
8	Mechanical seal	Carbon/Ceramic
9	Impeller	HT200
10	Pump body	HT200
11	Inlet adaptor	HT200
12	Non-return valve	NBR
13	Capacitor	



### Package Information

Model	CW (Kgs)	L (mm)	W (mm)	H (mm)	Quantity (PCS/20'TEU)
XHS(m)1500	34.5	470	275	370	580
XHS(m)2000	36.5	470	275	370	580





### Application

- This series of pumps are widely used in industry, agriculture, studied the breeding, mines, construction sites, municipal sewage and so on, can be pumping containing short fibers, confetti, sediment and other solid particles or soft solid objects, such as mud, grey water, life wastewater, sewage, etc., is an agricultural irrigation and drainage, digging, and the ideal water conservancy equipment from the construction site. However, it is not suitable for the occasions with explosion-proof requirements.

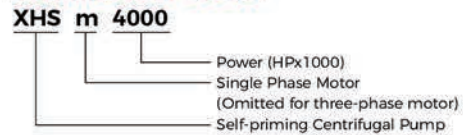
### Pump

- A variety of installation methods, which can be connected with hoses, hard pipes and coupling installations.
- Cast iron pump body and support under special anti-rust treatment.
- AISI 304 shaft
- Easy maintenance, high efficiency and energy saving
- Max. liquid temperature: +60°C
- Max. suction: 5 m

### Motor

- Low noise & Long life bearing
- Motor with copper winding
- Insulation class: F
- Enclosures class: IPX4
- Max. ambient temperature: +50°C

### Identification Codes

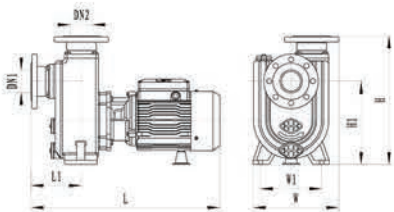


### Technical Data

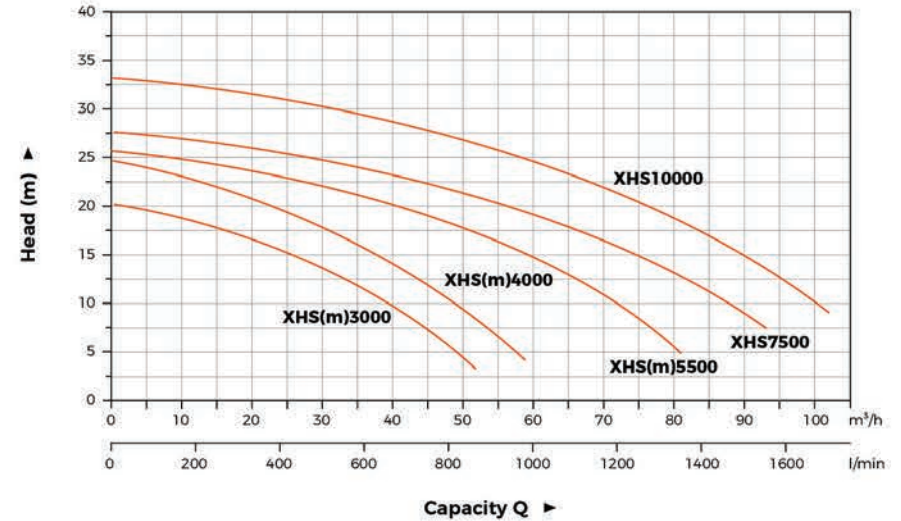
Model		Power	Q(m³/h)	0	5	10	15	20	25	30	35	40	45	50	60	65	70	80	90	100				
Single Phase	Three Phase	kW	HP	Q(l/min)	0	83	166	199	249	332	415	498	581	664	747	830	996	1079	1162	1328	1494	1660		
XHSm3000	XHS3000	2.2	3	H (m)	20	20	19	19	18	17	15	14	12	10	8	-	-	-	-	-	-	-	-	
XHSm4000	XHS4000	3	4		25	24	23	22	21	20	18	16	14	12	10	-	-	-	-	-	-	-	-	-
XHSm5500	XHS5500	4	5.5		26	25	25	24	24	23	22	22	21	19	18	15	13	11	6	-	-	-	-	-
-	XHS7500	5.5	7.5		28	27	27	27	27	26	26	25	24	23	22	21.5	19	18	16	13	9	-	-	-
-	XHS10000	7.5	10		33	33	33	33	32	32	31	31	30	29	28	27	24	23	22	19	15	10	-	-

### Dimension

Model	DN1	DN2	L (mm)	L1 (mm)	W (mm)	W1 (mm)	H (mm)	H1 (mm)
XHS(m)3000	2.5"	2.5"	582	165	274.5	200	408	254
XHS(m)4000								
XHS(m)5500								
XHS7500	3"	3"	706	185	315.5	230	472	305
XHS10000								

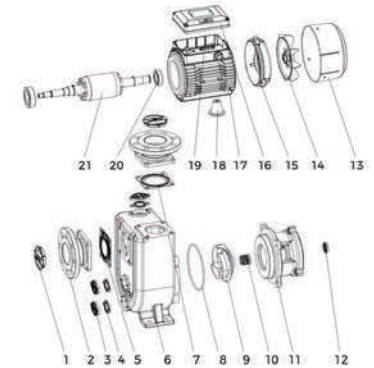


### Hydraulic Performance Curves



### Material Table

No.	Part	Material	No.	Part	Material
1	Dust cover	PE	13	Fan cover	08F/PP-GF10
2	Inlet flange	HT200	14	Fan	PP-GF30
3	Drain flange	HT200	15	Rear cover	HT200/ADC12
4	Drain gasket	NBR	16	Cover box	ABS
5	Inlet check valve	NBR	17	Stator	
6	Pump body	HT200	18	Brace	HT200/PA6-GF25
7	Outlet gasket	NBR	19	Capacitor	
8	O-ring sea	NBR	20	Bearing	
9	Impeller	HT200	21	Rotor	
10	Mechanical seal				
11	Support	HT200			
12	Oil seal				



### Package Information

Model	CW (Kgs)	L (mm)	W (mm)	H (mm)	Quantity (PCS/20 TEU)
XHS(m)3000	64.9(67.7)	643	319	556	253
XHS(m)4000	69.3(70.4)				
XHS(m)5500	97.5(102.4)	766	360	622	144
XHS7500	101.4				
XHS10000	105				

