



### Application

- Can be used to transfer clean water or other liquids similar to water in physical and chemical properties
- Suitable for small living water supply, automatic water sprinkler system, small air conditioner system or supporting equipment etc.

### Pump

- Special anti-rust treatment
- Brass impeller
- AISI 304 shaft
- Max. liquid temperature: +60°C
- Max. suction: +8 m

### Motor

- Low noise&Long life bearing
- Cooper winding
- Built-in thermal protector
- Insulation class: F
- Enclosures class: IPX4
- Max. ambient temperature: +50°C

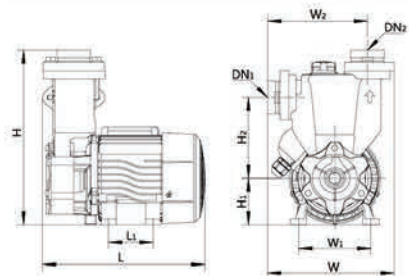
### Identification Codes

**L K S m 126**

- L — Power (W)
- K — Single Phase Motor
- S — Self-priming
- m — Peripheral Pump
- 126 — LEO Product Style

### Technical Data

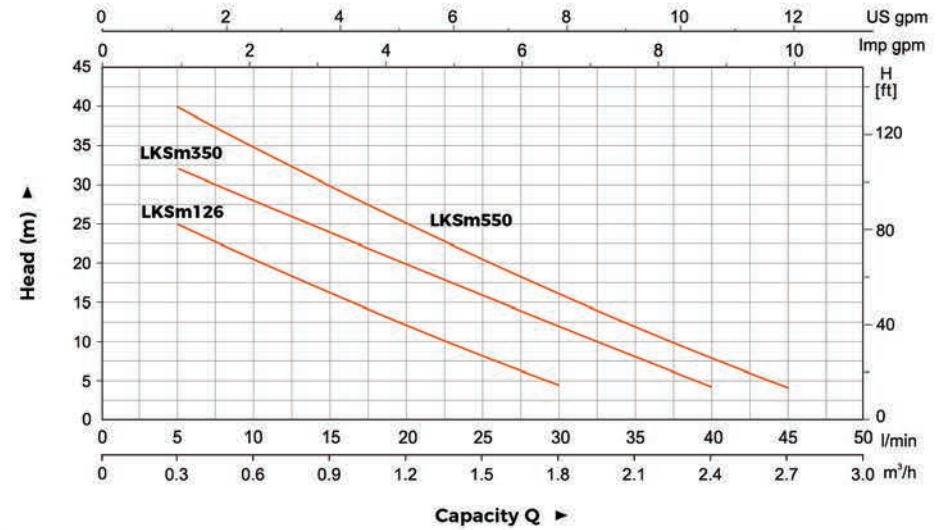
Model	Power		Q(m <sup>3</sup> /h) Q(l/min)	0	0.3	0.6	0.9	1.2	1.5	1.8	2.1	2.4	2.7
	kW	HP		0	5	10	15	20	25	30	35	40	45
LKSm126	0.125	0.17	H (m)	30	25	20.5	16	12	8	4	-	-	-
LKSm350	0.35	0.47		35	32	28	24	20	16	12	8	4	-
LKSm550	0.55	0.75		45	40	35	30	25	20.5	16	12	8	4



### Dimension

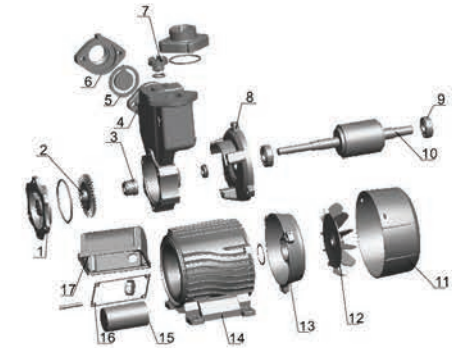
Model	DN1	DN2	L (mm)	W (mm)	H (mm)	L1 (mm)	W1 (mm)	W2 (mm)	H1 (mm)	H2 (mm)
LKSm126			219	165	214	60	97	133	63	88.5
LKSm350	1"	1"	215	166	239	60	97	134	63	110
LKSm550			259	177	253	90	112	146	75	113.5

### Hydraulic Performance Curves



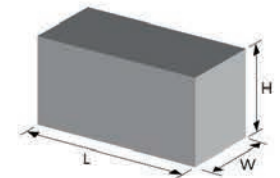
### Material Table

No.	Part	Material
1	Pump bonnet	Brass/Cast iron
2	Impeller	Brass
3	Mechanical seal	Carbon/Ceramic
4	Pump body	HT200
5	Check valve	NBR
6	Outlet connector	HT200
7	Filling plug	Brass
8	Front plate	HT200
9	Bearing	
10	Rotor	
11	Fan cover	PP
12	Fan	PP
13	Rear cover	ZL102
14	Stator	
15	Capacitor	
16	Sealing ring	NBR
17	Terminal box	ABS



### Package Information

Model	GW (Kgs)	L (mm)	W (mm)	H (mm)	Quantity (PCS/20' TEU)
LKSm126	6.6	250	205	250	2205
LKSm350	7.5	250	205	270	1960
LKSm550	10.8	295	210	295	1526





### Application

- Can be used to transfer clean water or other liquids similar to water in physical and chemical properties
- Suitable for small living water supply, automatic water sprinkler system, small air conditioner system or supporting equipment etc.

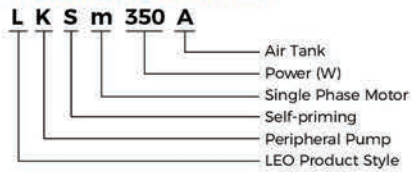
### Pump

- With 2L pressure tank for automatic operation
- Special anti-rust treatment
- Brass impeller
- AISI 304 shaft
- Max. liquid temperature: +60°C
- Max. suction: +9 m

### Motor

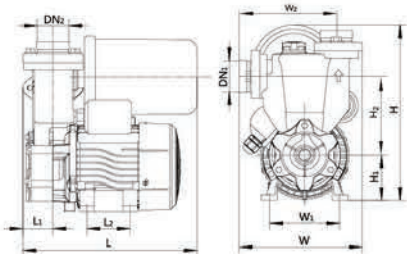
- Low noise&Long life bearing
- Cooper winding
- Built-in thermal protector
- Insulation class: F
- Enclosures class: IPX4
- Max. ambient temperature: +50°C

### Identification Codes



### Technical Data

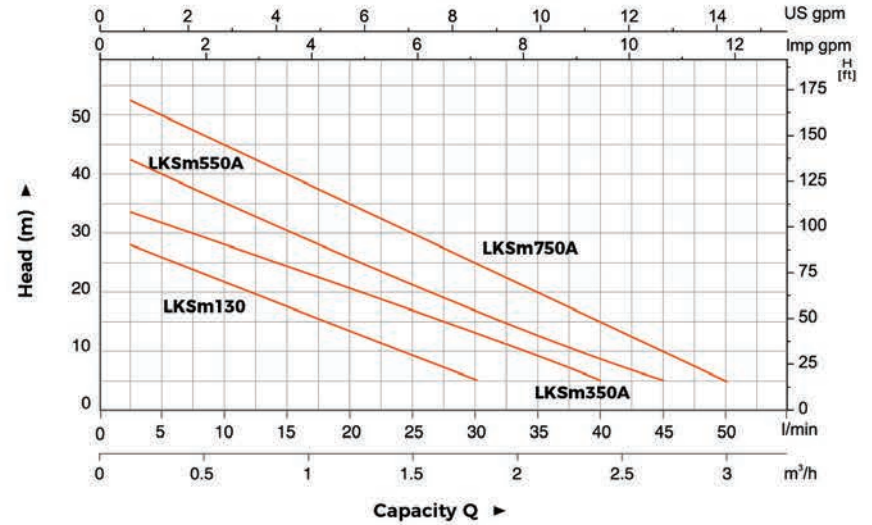
Model	Power		Q(m³/h)	Q(l/min)											
	kW	HP		0	0.3	0.6	0.9	1.2	1.5	1.8	2.1	2.4	2.7	3.0	
LKSm130	0.125	0.17	H (m)	30	22	18	15	10	5	3	-	-	-	-	
LKSm350A	0.35	0.47		35	32	27	23	18	15	12	8	3	-	-	
LKSm550A	0.55	0.75		45	40	35	30	25	20	15	10	8	3	-	
LKSm750A	0.75	1.0		55	50	45	40	35	30	25	20	15	10	5	



### Dimension

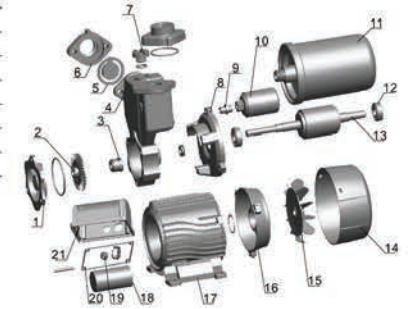
Model	DN1	DN2	L (mm)	W (mm)	H (mm)	L1 (mm)	W1 (mm)	W2 (mm)	H1 (mm)	H2 (mm)
LKSm130	1"	1"	256	165	243	60	97	133	63	107.5
LKSm350A			256	166	245	60	97	134	63	110
LKSm550A			260	177	253	90	112	146	75	113.5
LKSm750A			260	177	260	90	112	146	75	113.5

### Hydraulic Performance Curves



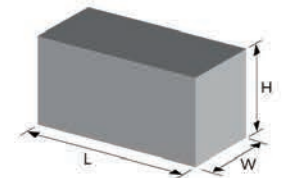
### Material Table

No.	Part	Material	No.	Part	Material
1	Pump bonnet	Brass/Cast iron	15	Fan	PP
2	Impeller	Brass	16	Rear cover	ZL102
3	Mechanical seal	Carbon/Ceramic	17	Stator	
4	Pump body	HT200	18	Capacitor	
5	Check valve	NBR	19	Cable holder	NBR
6	Outlet connector	HT200	20	Sealing ring	NBR
7	Filling plug	Brass	21	Terminal box	ABS
8	Front plate	HT200			
9	Bend	Iron			
10	Pressure switch				
11	Pressure tank	Iron			
12	Bearing				
13	Rotor				
14	Fan cover	PP			



### Package Information

Model	CW (Kgs)	L (mm)	W (mm)	H (mm)	Quantity (PCS/20'TEU)
LKSm130	8.16	285	195	290	1603
LKSm350A	8.6	285	195	290	1603
LKSm550A	12	290	215	305	1421
LKSm750A	13.25	290	215	310	1421





### Application

- Can be used to transfer clean water or other liquids similar to water in physical and chemical properties
- Suitable for small living water supply, automatic water sprinkler system, small air conditioner system or supporting equipment etc.

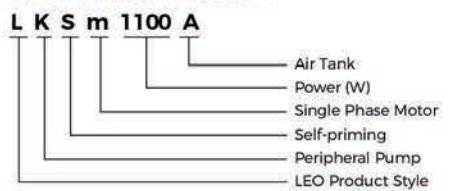
### Pump

- With 24L pressure tank for automatic operation
- Special anti-rust treatment
- Brass impeller
- AISI 304 shaft
- Max. liquid temperature: +60°C
- Max. suction: +9 m

### Motor

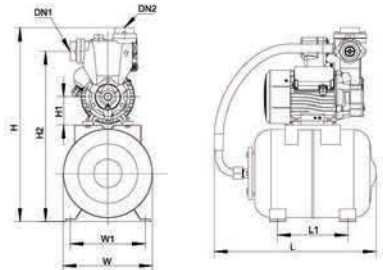
- Low noise & Long life bearing
- Copper winding
- Built-in thermal protector
- Insulation class: F
- Enclosures class: IPX4
- Max. ambient temperature: +50 °C

### Identification Codes



### Technical Data

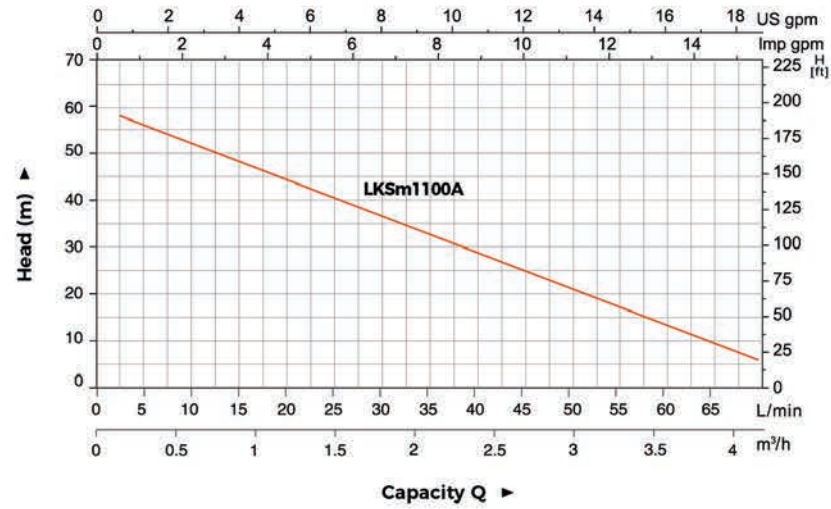
Model	Power		Q(m³/h)															
	kW	HP	0	0.3	0.6	0.9	1.2	1.5	1.8	2.1	2.4	2.7	3	3.3	3.6	3.9	4.2	
LKSm1100A	1.1	1.5	H(m)	60	56	52	48	44	40	36	32	28	24	20	16	12	8	4



### Dimension

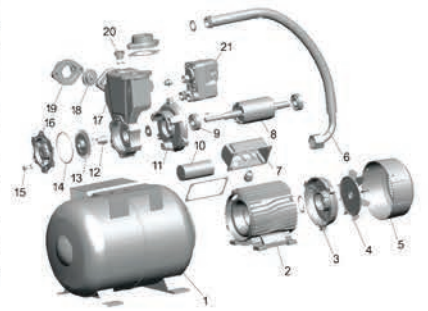
Model	DN1	DN2	L (mm)	W (mm)	H (mm)	L1 (mm)	W1 (mm)	H1 (mm)	H2 (mm)
LKSm1100A	1 1/2"	1 1/2"	480	270	595	220	235	86	520

### Hydraulic Performance Curves



### Material Table

No.	Part	Material	No.	Part	Material
1	Air tank	Iron	13	Impeller	Brass
2	Stator		14	O-ring	NBR
3	Rear cover	ZL102	15	Screw	Steel
4	Fan	PP	16	Pump bonnet	Brass
5	Fan cover	PP	17	Pump body	HT200
6	Flexible hose		18	Check valve	NBR
7	Terminal box	ABS	19	Outlet connector	HT200
8	Rotor		20	Filling plug	Brass
9	Bearing		21	Pressure switch	
10	Capacitor				
11	Front plate	HT200			
12	Mechanical seal	Carbon/Ceramic			



### Package Information

Model	GW (Kgs)	L (mm)	W (mm)	H (mm)	Quantity (PCS/20' TEU)
LKSm1100A	25	515	325	645	234

