



### Application

- Can be used to transfer clean water or other liquids similar to water in physical and chemical properties
- Suitable for small living water supply, automatic water sprinkler system, small air conditioner system or supporting equipment etc.

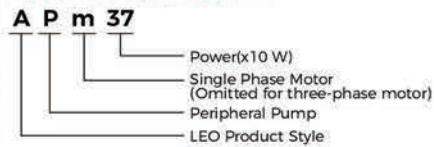
### Pump

- Special anti-rust treatment for cast iron pump body and support
- Brass impeller
- AISI 304 shaft
- Max. liquid temperature: +60°C
- Max. suction: 8 m

### Motor

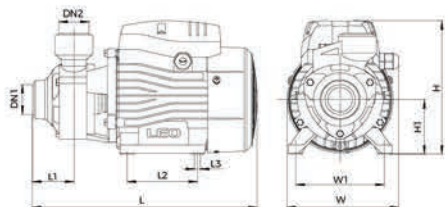
- Low noise&Long life bearing
- Motor with copper winding
- Built-in thermal protector for single phase motor
- Insulation class: F
- Enclosures class: IPX4
- Max. ambient temperature: +50°C
- IE 2 motor (AP110, AP150)

### Identification Codes



### Technical Data

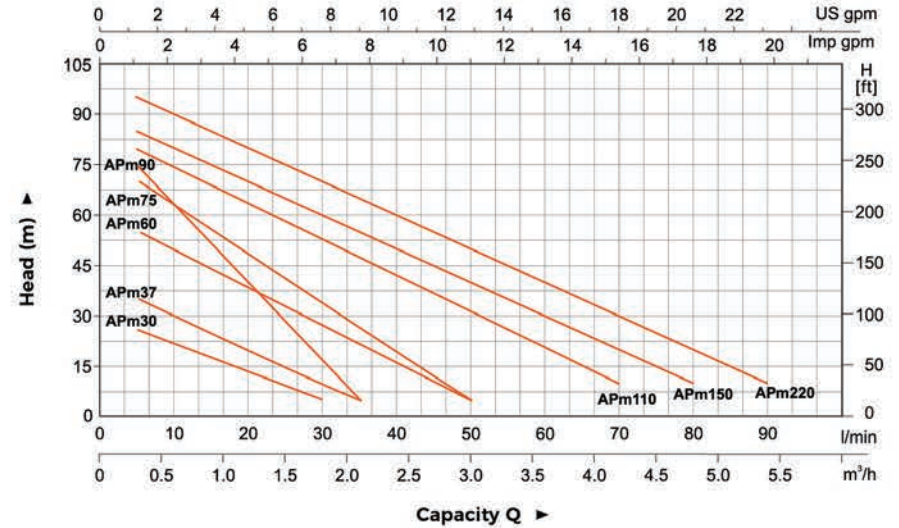
Model		Power		Q(m³/h)		Q(l/min)																											
Single Phase	Three Phase	kW	HP	0	0.3	0.6	0.9	1.2	1.5	1.8	2.1	2.4	3.0	3.6	4.2	4.8	5.4	H (m)															
				0	5	10	15	20	25	30	35	40	50	60	70	80	90																
APm30	-	0.3	0.4	30	26	20	15	12	8	5	-	-	-	-	-	-	-																
APm37	-	0.37	0.5	40	35	30	25	20	15	10	5	-	-	-	-	-	-																
APm60	-	0.6	0.8	60	55	50	40	35	30	25	20	10	5	-	-	-	-																
APm75	-	0.75	1.0	75	70	60	50	45	35	28	22	15	5	-	-	-	-																
APm90	-	0.75	1.0	90	75	60	50	35	25	15	5	-	-	-	-	-	-																
APm110	AP110	1.1	1.5	85	80	75	65	60	55	50	45	40	30	18	10	-	-																
APm150	AP150	1.5	2.0	90	85	80	75	70	65	60	55	50	40	30	20	10	-																
APm220	AP220	2.2	3.0	100	95	90	85	80	75	70	65	60	50	40	30	20	10																



### Dimension

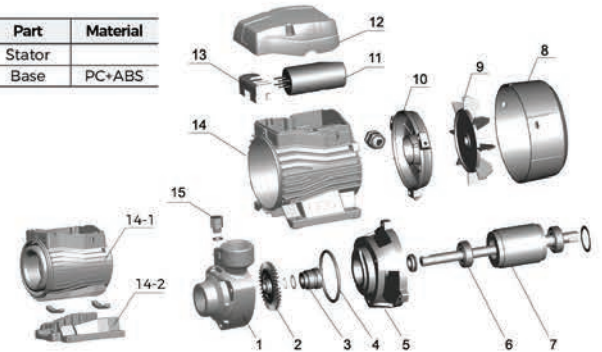
Model	DN1	DN2	L (mm)	W (mm)	H (mm)	L1 (mm)	L2 (mm)	L3 (mm)	W1 (mm)	H1 (mm)
APm30			260	132	155	46.5	80	8.5	100	63
APm37			260	132	155	46.5	80	8.5	100	63
APm60	1"	1"	282	147	185	51	90	8.5	112	73
APm75			300	147	185	54.5	90	8.5	112	73
APm90	3/4"	3/4"	297	147	185	50	90	8.5	112	73
APm110			338	165	210	56	100	9	125	86
APm150	1"	1"	338	165	210	56	100	9	125	86
APm220			395	170	235	56	123	12	140	96
AP220			338	165	210	56	100	9	125	86

### Hydraulic Performance Curves



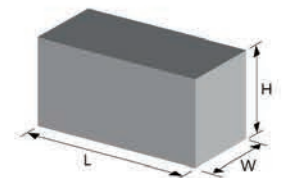
### Material Table

No.	Part	Material	No.	Part	Material
1	Pump body	HT 200	14-1	Stator	
2	Impeller	Brass	14-2	Base	PC+ABS
3	Mechanical seal	Carbon/Ceramic			
4	O-ring	NBR			
5	Support	HT200			
6	Bearing				
7	Rotor				
8	Fan cover	PP			
9	Fan	PP			
10	Rear cover	ZL102			
11	Capacitor				
12	Terminal box	PA6-GF25			
13	Terminal board	PC			
14	Stator				
15	Filling plug	HPb59-1			



### Package Information

Model	GW (Kgs)	L (mm)	W (mm)	H (mm)	Quantity (PCS/20'TEU)
APm30	5.65	283	158	174	3132
APm37	5.85	283	158	174	3132
APm60	9.5	315	190	210	2365
APm75	10.6	335	190	210	2222
APm90	10.8	335	190	210	2222
APm110	15.75	370	210	235	1230
APm150	16.85	370	210	235	1230
APm220	23.5	420	225	265	955
AP220	16.85	370	210	235	1230





### Application

- Can be used to transfer clean water or other liquids similar to water in physical and chemical properties
- Suitable for small living water supply, automatic water sprinkler system, small air conditioner system or supporting equipment etc.

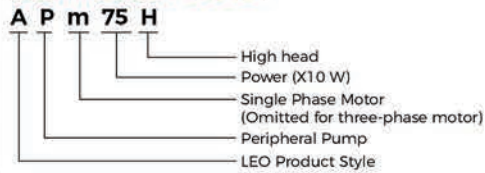
### Pump

- Special anti-rust treatment for cast iron pump body and support
- Anti-block system for impeller
- Brass impeller
- AISI 304 shaft
- Max. liquid temperature: +85°C
- Max. suction: +8 m

### Motor

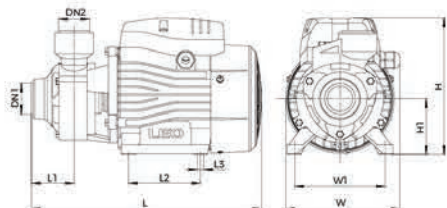
- Low noise&Long life bearing
- Motor with cooper winding
- Built-in thermal protector for single phase motor
- Insulation class: F
- Enclosures class: IPX4
- Max. ambient temperature: +50°C

### Identification Codes



### Technical Data

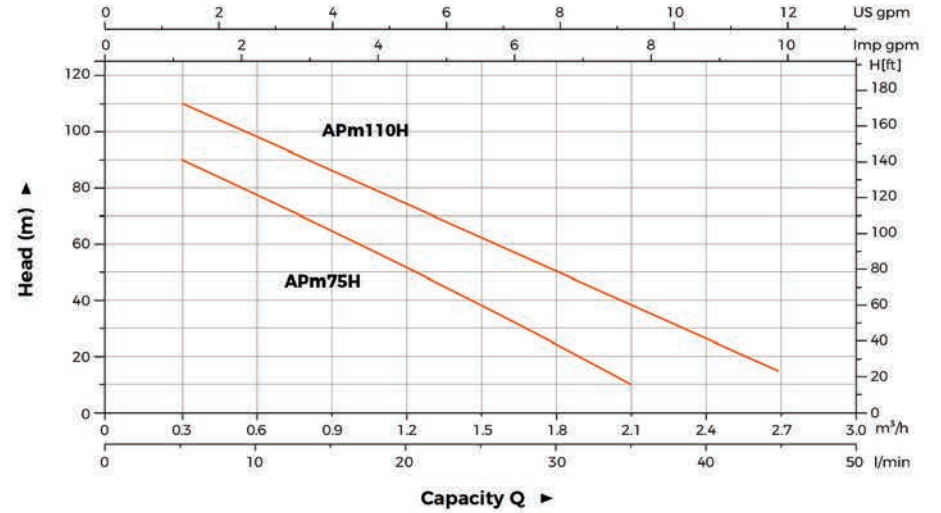
Model	Power		Q(m <sup>3</sup> /h)	Q(l/min)										
	KW	HP		0	0.3	0.6	0.9	1.2	1.5	1.8	2.1	2.4	2.7	3.0
APm75H	0.75	1.0	H (m)	105	85	70	60	40	30	20	10	-	-	-
APm110H	1.1	1.5		125	110	100	85	70	60	40	32	25	15	-



### Dimension

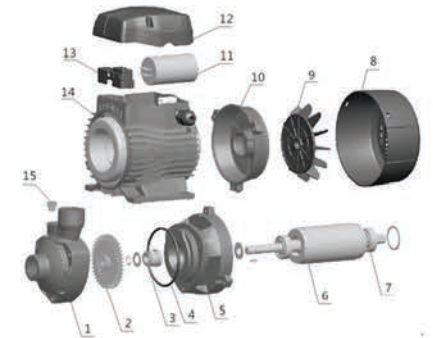
Model	DN1	DN2	L (mm)	W (mm)	H (mm)	L1 (mm)	L2 (mm)	L3 (mm)	W1 (mm)	H1 (mm)
APm75H	3/4"	3/4"	299	147	183	52.5	90	8.5	112	73
APm110H	1"	1"	338	165	210	56	100	9	125	86

### Hydraulic Performance Curves



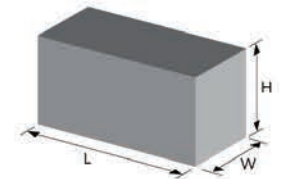
### Material Table

No.	Part	Material
1	Pump body	HT200
2	Impeller	Brass
3	Mechanical seal	Carbon/Ceramic/Silicon Carbide
4	O-ring	NBR
5	Support	HT200
6	Rotor	
7	Bearing	
8	Fan cover	PP
9	Fan	PP
10	End plate	ZL 102
11	Capacitor	
12	Capacitor box	PA6-GF25
13	Terminal board	PC
14	Stator	
15	Filling plug	HPb59-1



### Package Information

Model	GW (Kgs)	L (mm)	W (mm)	H (mm)	Quantity (PCS/20 TEU)
APm75H	11.5	335	190	220	1851
APm110H	16.25	370	210	235	1565





### Application

- Can be used to transfer clean water or other liquids similar to water in physical and chemical properties
- Suitable for small living water supply, automatic water sprinkler system, small air conditioner system or supporting equipment etc.

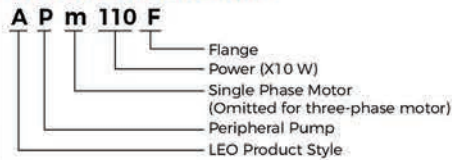
### Pump

- Special anti-rust treatment for cast iron pump body and support
- Brass impeller
- AISI 304 shaft
- Max. liquid temperature: +60°C
- Max. suction: +8 m

### Motor

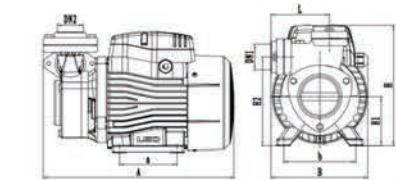
- Low noise&Long life bearing
- Motor with cooper winding
- Built-in thermal protector for single phase motor
- Insulation class: F
- Enclosures class: IPX4
- Max. ambient temperature: +50°C
- IE 2 motor

### Identification Codes



### Technical Data

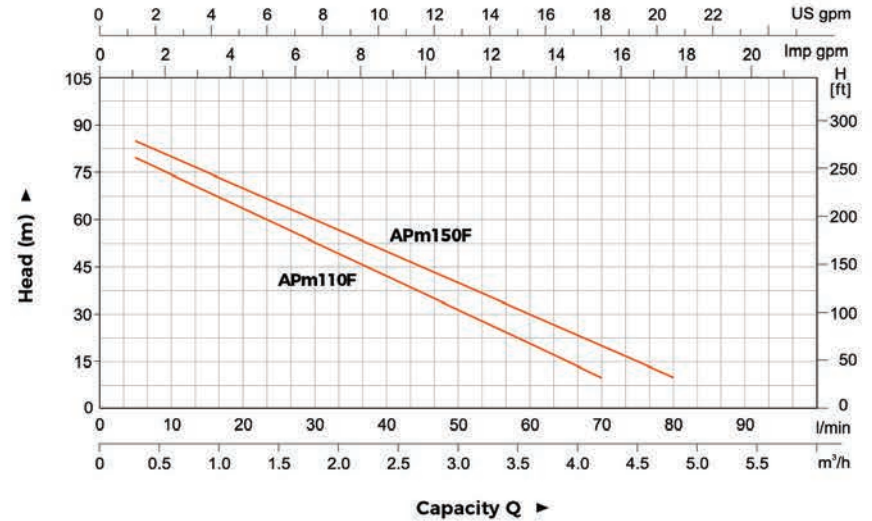
Model		Power		Q(m³/h)													
Single Phase	Three Phase	kW	HP	0	0.3	0.6	0.9	1.2	1.5	1.8	2.1	2.4	3.0	3.6	4.2	4.8	
APm110F	AP110F	1.1	1.5	H (m)													
				0	5	10	15	20	25	30	35	40	50	60	70	80	-
APm150F	AP150F	1.5	2.0	90	85	80	75	65	60	55	50	45	40	30	18	10	



### Dimension

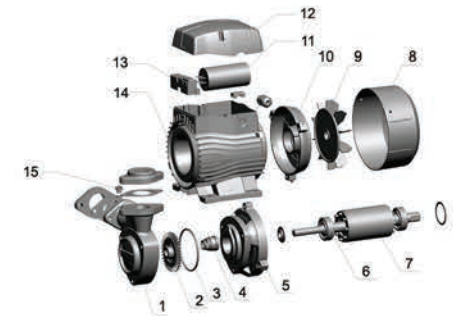
Model	DN1	DN2	A (mm)	B (mm)	L (mm)	a (mm)	b (mm)	H (mm)	H1 (mm)	H2 (mm)
APm110F	1.25"	1.25"	330	168	100	100	125	210	86	154.5
APm150F	1.25"	1.25"	332	168	100	100	125	210	86	154.5

### Hydraulic Performance Curves



### Material Table

No.	Part	Material
1	Pump body	HT200
2	Mechanical seal	Carbon/Ceramic
3	Impeller	Brass
4	O-ring	NBR
5	Support	HT200
6	Bearing	
7	Rotor	
8	Fan cover	PP
9	Fan	PP
10	Rear cover	ZL 102
11	Capacitor	
12	Terminal box	ABS
13	Terminal board	PC
14	Stator	
15	Filling plug	HPb59-1



### Package Information

Model	CW (Kgs)	L (mm)	W (mm)	H (mm)	Quantity (PCS/20' TEU)
APm110F	16.5	365	200	245	1240
APm150F	17.4	365	200	245	1180

