



Application

- Can be used to transfer clean water or other liquids similar to water in physical and chemical properties
- Suitable for lifting water from the well, sprinkling irrigation in garden, pressure boosting of running water, and supporting equipment etc.

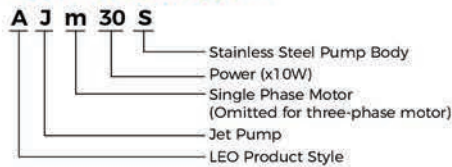
Pump

- Stainless steel pump body
- Support under special anti-rust treatment
- Stainless steel impeller
- AISI 304 shaft
- Max. liquid temperature: +60°C
- Max. suction: +9 m

Motor

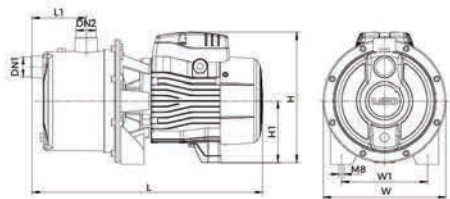
- Low noise&Long life bearing
- Motor with copper winding
- Built-in thermal protector for single phase motor
- Insulation class: F
- Enclosures class: IPX4
- Max.ambient temperature: +50°C

Identification Codes



Technical Data

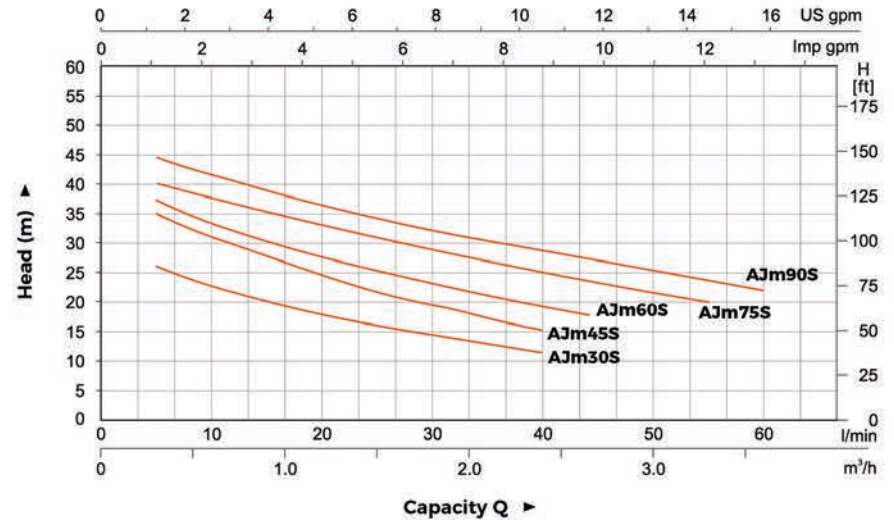
Model	Power		Capacity Q (m³/h)													
	kW	HP	0	0.3	0.6	0.9	1.2	1.5	1.8	2.1	2.4	2.8	3.0	3.3	3.6	
AJm30S	0.3	0.4	30	26	23	20	18	16.5	15	13	11	-	-	-	-	
AJm45S	0.45	0.6	38	35	31	27	25	22	20	19	16	-	-	-	-	
AJm60S	0.6	0.8	42	37	33	30	27	25	23	21	20	18	-	-	-	
AJm75S	0.75	1.0	47	40	38	36	34	32	30	28	27	25	23	20	-	
AJm90S	0.9	1.2	48	44	42	39	37	35	34	32	31	29	28	26	22	



Dimension

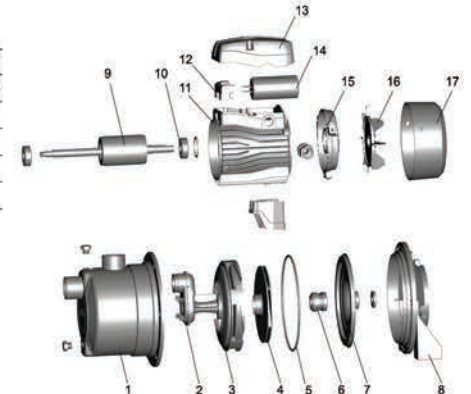
Model	DN1	DN2	L (mm)	W (mm)	H (mm)	L1 (mm)	W1 (mm)	H1 (mm)
AJm30S	1"	1"	229	180	181.5	75	140	92
AJm45S			229	180	181.5	75	140	92
AJm60S			385	200	213	88	140	103
AJm75S			385	200	213	88	140	103
AJm90S			385	200	213	88	140	103

Hydraulic Performance Curves



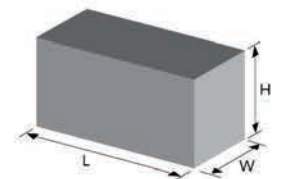
Material Table

No.	Part	Material	No.	Part	Material
1	Pump body	AISI304	13	Terminal box	PAG-GF25
2	Venturi tube	PPO	14	Capacitor	
3	Diffuser	PPO	15	Rear cover	ZL102
4	Impeller	AISI304	16	Fan	PP
5	O-ring	NBR	17	Fan cover	PP
6	Mechanical seal	Carbon/Ceramic			
7	Bracket cover	AISI304			
8	Support	ZL102			
9	Rotor				
10	Bearing				
11	Stator				
12	Terminal board	PC			



Package Information

Model	GW (Kgs)	L (mm)	W (mm)	H (mm)	Quantity (PCS/20'TEU)
AJm30S	5.7	350	180	220	1920
AJm45S	6.7	350	180	220	1920
AJm60S	9.2	420	228	257	1056
AJm75S	10.1	420	228	257	1056
AJm90S	10.7	420	228	257	1056





Application

- Can be used to transfer clean water or other liquids similar to water in physical and chemical properties
- Suitable for lifting water from the well, sprinkling irrigation in garden, pressure boosting of running water, and supporting equipment etc.

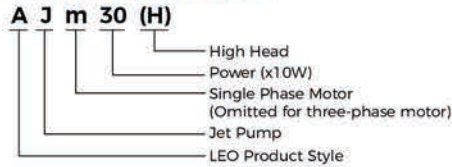
Pump

- Cast iron pump body and support under special anti-rust treatment
- Stainless steel impeller
- AISI 304 shaft
- Max. liquid temperature: +60°C
- Max. suction: +9 m

Motor

- Low noise&Long life bearing
- Motor with copper winding
- Built-in thermal protector for single phase motor
- Insulation class: F
- Enclosures class: IPX4
- Max.ambient temperature: +50 °C

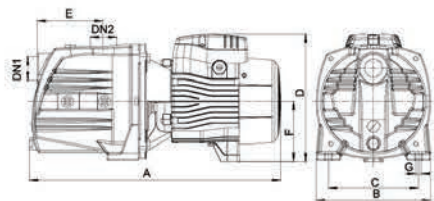
Identification Codes



Technical Data

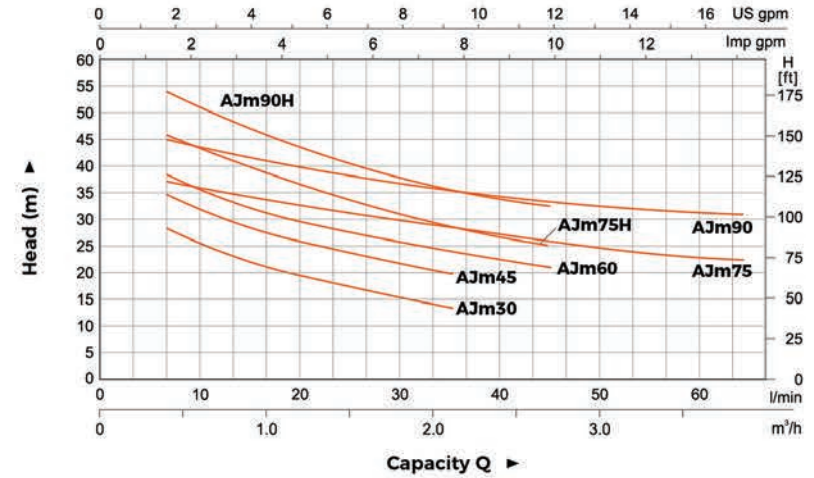
Model	Power		Q(m³/h)	Q(l/min)															
	kW	HP		0	0.3	0.6	0.9	1.2	1.5	1.8	2.1	2.4	2.8	3	3.3	3.6	3.9		
AJm30	0.3	0.4	H (m)	33	30	26	22.5	20	18	16	14	-	-	-	-	-	-		
AJm45	0.45	0.6		38	36	32	28	25	22	20	18	-	-	-	-	-	-		
AJm60	0.6	0.8		44	41	37	33.5	31	28.5	26	24	22.5	21	-	-	-	-		
AJm75	0.75	1.0		40	38	36	34.5	33	31.5	30	29	28	27	26	25	24	23		
AJm75H	0.75	1.0		50	47	43	40	37	34.5	32	30	27.5	25	-	-	-	-		
AJm90	0.9	1.2		48	46	44	42.5	41	39.5	38	36	35	34	33	32	31	30		
AJm90H	0.9	1.2		60	57	53	49	46	43	40	37	35	33	-	-	-	-		

Dimension



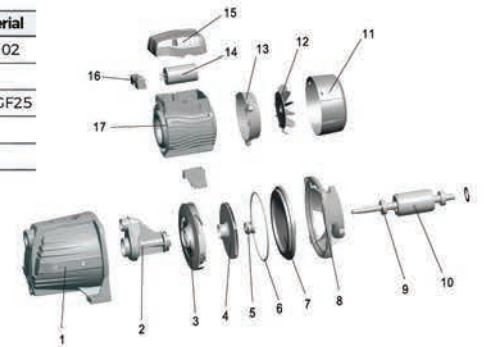
Model	DN1	DN2	A (mm)	B (mm)	C (mm)	D (mm)	E (mm)	F (mm)	G (mm)
AJm30			351	160	125	182	90	90	10
AJm45			351	160	125	182	90	90	10
AJm60			418	190	150	213	114	100	10
AJm75	1"	1"	418	190	150	213	114	100	10
AJm75H			418	190	150	213	114	100	10
AJm90			418	190	150	213	114	100	10
AJm90H			418	190	105	213	114	100	10

Hydraulic Performance Curves



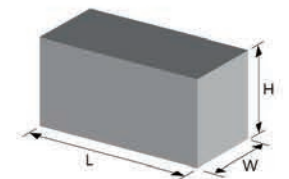
Material Table

No.	Part	Material	No.	Part	Material
1	Pump body	HT 200	13	Rear cover	ZL 102
2	Venturi tube	PPO	14	Capacitor	
3	Diffuser	PPO	15	Terminal box	PA6-GF25
4	Impeller	AISI 304	16	Terminal board	
5	Mechanical seal	Carbon/Ceramic	17	Stator	
6	O-ring	NBR			
7	Support cover	AISI 304			
8	Support	ZL 102			
9	Bearing				
10	Rotor				
11	Fan cover	PP			
12	Fan	PP			



Package Information

Model	CW (Kgs)	L (mm)	W (mm)	H (mm)	Quantity (PCS/20'TEU)
AJm30	8.5	390	185	215	1740
AJm45	9.5	390	185	215	1740
AJm60	13.9	455	215	245	1170
AJm75	15	455	215	245	1170
AJm75H	15	455	215	245	1170
AJm90	16	455	215	245	1170
AJm90H	16	455	215	245	1170





Application

- Can be used to transfer clean water or other liquids similar to water in physical and chemical properties
- Suitable for lifting water from the well, sprinkling irrigation in garden, pressure boosting of running water, and supporting equipment etc.

Pump

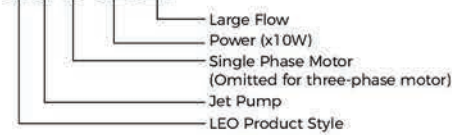
- Cast iron pump body and support under special anti-rust treatment
- Stainless steel impeller
- AISI 304 shaft
- Max. liquid temperature: +60°C
- Max. suction: +9 m

Motor

- Low noise&Long life bearing
- Motor with copper winding
- Built-in thermal protector for single phase motor
- Insulation class: F
- Enclosures class: IPX4
- Max.ambient temperature: +50 °C

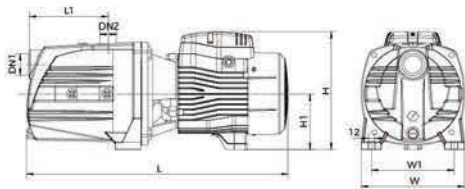
Identification Codes

A J m 110 (L)



Technical Data

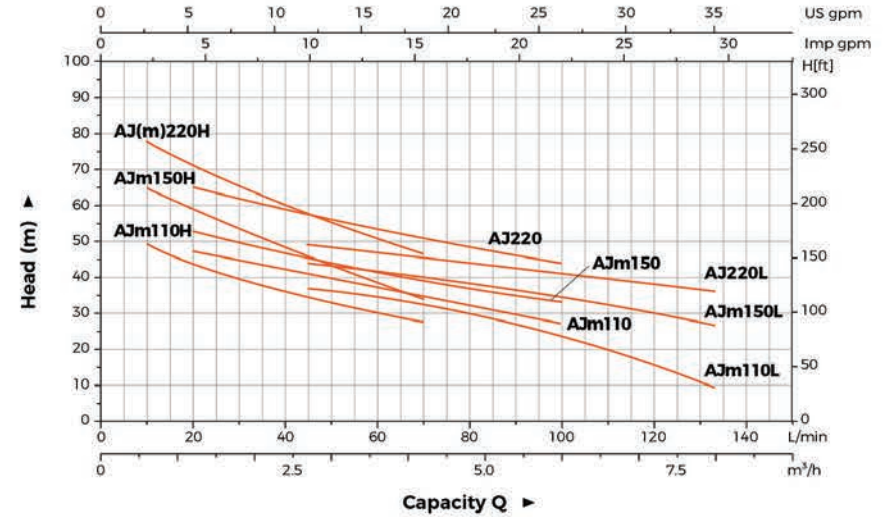
Model	Power		Q(m³/h)															
	kW	HP	0	0.6	0.9	1.2	1.5	1.8	2.1	2.4	2.7	3	3.6	4.2	4.8	6.0	7.5	8.4
AJm110H	1.1	1.5	60	50	46	44	42	40	38	36	34	32	30	28	-	-	-	-
AJm150H	1.5	2	72	65	61	59	57	54	51	48	45	43	39	34	-	-	-	-
AJ(m)220H	2.2	3	85	78	75	71	68	65	63	60	57.5	55	51.5	46	-	-	-	-
AJm110	1.1	1.5	55	52	49	48	46	45	43	42	41	40	37	35	33	27	-	-
AJm150	1.5	2	60	56	55	53	52	49	48	46	45	44	42	40	36	33	-	-
AJ220	2.2	3	68	67.5	67	66	65	63	61	59	57	56	54	51	48	44	-	-
AJm110L	1.1	1.5	47	45	44	43	42	41	40	39	38	36	34	32	30	24	17	9
AJm150L	1.5	2	54	53	52	51	49	48	46	45	44	43	42	39	38	34	31	26
AJ220L	2.2	3	55	54	53	52	51.5	51	50.5	49.5	49	48	47	45	44	41	38	36



Dimension

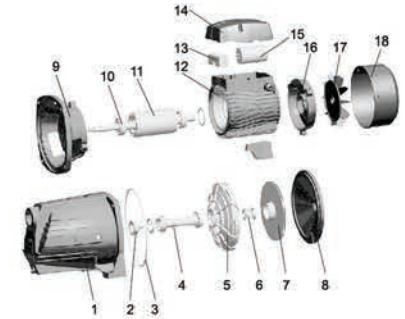
Model	DN1	DN2	L (mm)	W (mm)	H (mm)	L1 (mm)	W1 (mm)	H1 (mm)
AJm110H	1 1/4"	1 1/4"	512	206	236	153	165	112
AJm150H			512	206	236	153	165	112
AJ(m)220H			512	206	236	153	165	112
AJm110	1 1/2"	1 1/2"	512	206	236	153	165	112
AJm150			512	206	236	153	165	112
AJ220			512	206	236	153	165	112
AJm110L	1 1/2"	1 1/2"	512	206	236	153	165	112
AJm150L			512	206	236	153	165	112
AJ220L			512	206	236	153	165	112

Hydraulic Performance Curves



Material Table

No.	Part	Material	No.	Part	Material
1	Pump body	HT 200	13	Terminal board	PC
2	Nozzle	PPO	14	Terminal box	PA6-GF25
3	O-ring	NBR	15	Capacitor	
4	Venturi tube	PPO	16	Rear cover	ZL102
5	Diffuser	PPO	17	Fan	PP
6	Mechanical seal	Carbon/Ceramic	18	Fan cover	PP
7	Impeller	AISI 304			
8	Support cover	HT200			
9	Support	ZL102			
10	Bearing				
11	Rotor				
12	Stator				



Package Information

Model	GW (Kgs)	L (mm)	W (mm)	H (mm)	Quantity (PCS/20'TEU)
AJm110	24.5	572	225	259	816
AJm110H	24.5	572	225	259	816
AJm110L	24.5	572	225	259	816
AJm150	25.4	572	225	259	816
AJm150H	25.4	572	225	259	816
AJm150L	25.4	572	225	259	816
AJ(m)220H	26.0	572	225	259	816

