



- ### Application
- To transfer clean water with liquid temperature between 0°C and 40°C
 - Application in water supply and drainage for factories, mines, municipal facilities as well as field irrigation, ect.

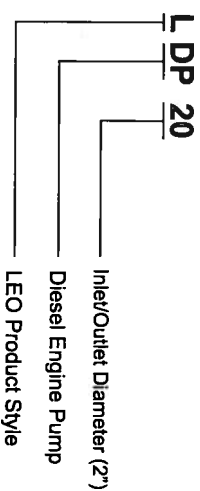
Features

- New unique design with ergonomic feature
- Portable and compact pump frame
- High quality motor with excellent performance and long service life
- Impeller designed with high efficiency hydraulic system
- Low fuel consumption

Engine

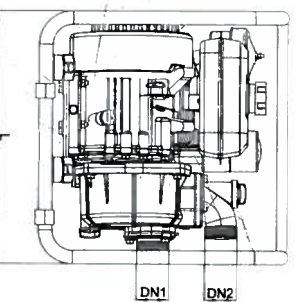
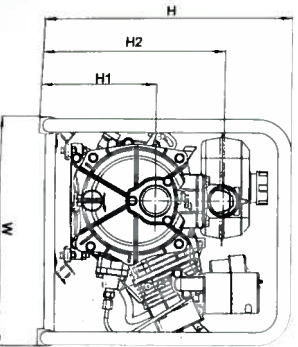
- Single cylinder, 4-stroke, air cooled
- Max power :4 HP
- Displacement: 207 cc
- Rated speed: 3000±150rpm

Identification Codes



Technical Data

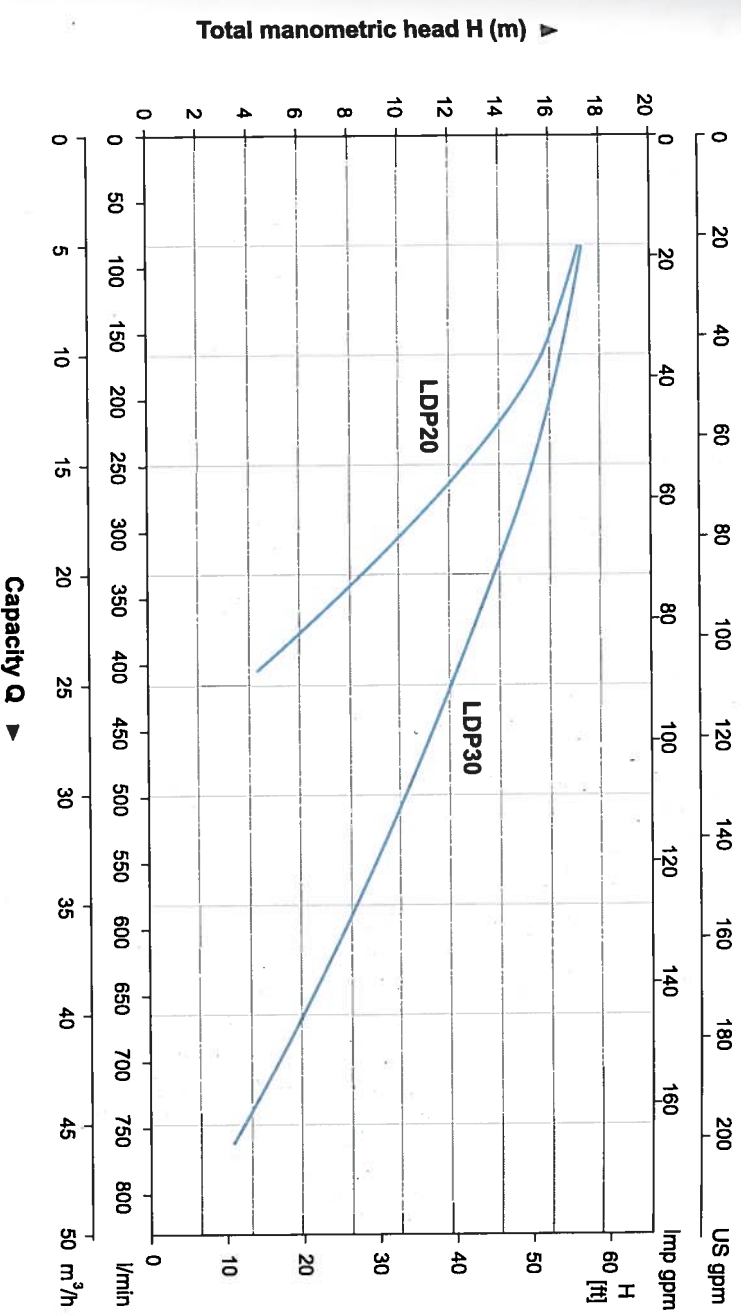
MODEL	POWER HP	Q (m³/h)	Q (l/min)	H (m)	0	5	10	15	20	25	30	35	40	45
LDP20	4	0	83.3	18	166.7	250	333.3	416.7	500	583.3	666.7	750		
LDP30	4	0	18	17	16.5	15.5	14	12	10	8	6.4	4.4		



Dimension

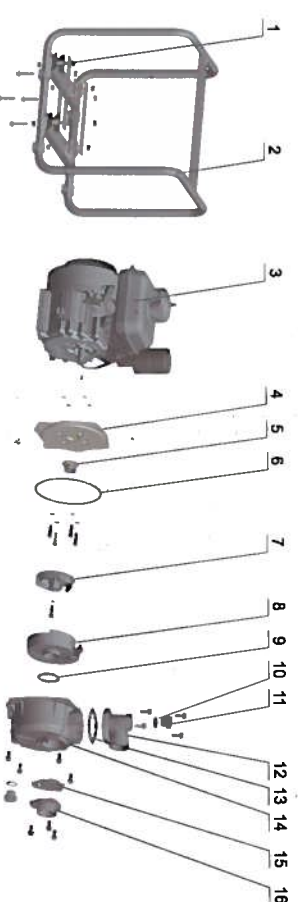
Model	DN1	DN2	L (mm)	W (mm)	H (mm)	H1 (mm)	H2 (mm)
LDP20	2"	2"	470	427	466	181	341
LDP30	3"	3"	470	427	466	225	378

Hydraulic Performance Curves



Materials Table

No.	Part	Material
1	Damper	
2	Frame	Steel
3	Diesel engine	Aluminum
4	Pump cover	Carbon/Ceramic
5	Mechanical seal	NBR
6	O-ring	HT200
7	Impeller	NBR
8	Diffuser	NBR
9	Seal ring	NBR
10	O-ring	ABS
11	Plug	Aluminum
12	Outlet	NBR
13	Gasket	Aluminum
14	Pump body	NBR
15	One-way valve	Aluminum
16	Inlet	Aluminum



Package Information

Model	GW (Kgs)	L (mm)	W (mm)	H (mm)	Quantity (PCS/20' TEU)
LDP20	30.7	485	435	505	244
LDP30	31.7	485	435	505	244

